



Airport Traffic Report

June 2006

European passenger traffic up 6.3% during first half of 2006

The 'ACI EUROPE Airport Traffic Report - June 2006' includes 102 airports in total.

During the first half of 2006 passenger traffic increased by +6.3% compared with the corresponding period in 2005.

The overall **passenger** traffic at European airports increased by **+7.0%** in **June 2006** compared with June 2005. The overall **freight** traffic among European airports increased **+4.8%** in June 2006 when compared with the corresponding month in 2005. The overall figure for **movements** at European airports increased **+3.4%** in June 2006 when compared with June 2005.

Passenger figures for June 2006 once again indicate that Group 4 airports (airports welcoming less than 5 million passengers per year) had the largest increase in traffic - with an average increase of **+11.8%** when compared with June 2005 - and an average increase of **+25.9%** when compared with June 2004.

Airports welcoming more than 25 million passengers per year (Group 1), airports welcoming between 10 and 25 million passengers (Group 2) and airports welcoming between 5 and 10 million passengers (Group 3) reported an average increase of **+5.5%**, **+7.2%** and **+5.8%** respectively when compared with June 2005. The same comparison of June 2006 with June 2004 demonstrates an average increase of **+10.8%**, **+13.7%** and **+13.6%** respectively.

Examples of airports that experienced the highest increase in passenger traffic per group, when comparing June 2006 with June 2005, include:

- **Group 1 airports** – Barcelona (**+12.4%**), Madrid (**+9.1%**) and Amsterdam Schiphol (**7.2%**);
- **Group 2 airports** – Dublin (**+15.7%**), Düsseldorf (**+14.6%**) and London Stansted (**+11.8%**);
- **Group 3 airports** – Stuttgart (**+16.9%**), Tenerife Sur (**+12.6%**) and Warsaw (**+12.2%**);
- **Group 4 airports** – Moscow-Vnukovo (**+62.0%**), Liege (**+49.5%**) and Basel-Mulhouse (**+34.0%**).

| Airports | | Passengers | | | | Commercial movements | | Freight (metric tonnes) | |
|----------|-----------------------------------|------------|---------------------------------|-------------------|---------------------------------|----------------------|---------------------------------|----------------------------|---------------------------------|
| | | June 2006 | 2006v 2005 variation % | January – June | 2006v 2005 variation % | June 2006 | 2006v 2005 variation % | June 2006 | 2006v 2005 variation % |
| 1 | London Heathrow (LHR) | 6,133,700 | 1.9% | 33,085,500 | 0.5% | 39,801 | 0.4% | 107,263 | -2.4% |
| 2 | Paris Roissy (CDG) | 5,096,600 | 6.0% | 27,193,400 | 6.0% | 45,726 | 4.3% | N/A | N/A |
| 3 | Frankfurt (FRA) | 4,823,500 | 4.0% | 25,065,500 | 1.3% | 41,185 | 1.8% | 166,784 | 9.2% |
| 4 | Amsterdam (AMS) | 4,232,900 | 7.2% | 21,547,700 | 4.3% | 37,530 | 6.5% | 124,223 | 8.4% |
| 5 | Madrid (MAD) | 3,939,400 | 9.1% | 21,474,300 | 8.5% | 36,473 | 3.3% | 24,588 | -8.7% |
| 6 | London Gatwick (LGW) | 3,319,900 | 2.9% | 15,723,300 | 4.4% | 23,039 | -0.2% | 18,472 | 7.9% |
| 7 | Munich (MUC) | 2,772,500 | 6.9% | 14,512,500 | 7.7% | 33,704 | -0.0% | 18,339 | 2.0% |
| 8 | Barcelona (BCN) | 2,760,300 | 12.4% | 14,169,300 | 11.6% | 28,197 | 6.0% | 7,971 | 3.2% |
| 9 | Rome-Fiumicino (FCO) | 2,727,200 | 3.5% | 14,242,600 | 3.9% | 26,710 | 1.8% | 10,736 | -4.7% |
| 10 | Palma de Mallorca (PMI) | 2,697,500 | 10.8% | 9,503,200 | 6.2% | 20,163 | 9.2% | 2,075 | 4.9% |
| 11 | Manchester (MAN) | 2,313,000 | 1.0% | 10,462,900 | 1.6% | 19,795 | -2.5% | 12,947 | 12.4% |
| 12 | Paris Orly (ORY) | 2,284,200 | 2.4% | 12,528,300 | 3.0% | 19,892 | 2.3% | N/A | N/A |
| 13 | London Stansted (STN) | 2,248,100 | 11.8% | 11,283,400 | 9.3% | 17,089 | 9.2% | 20,857 | -0.5% |
| 14 | Dublin (DUB) | 2,041,200 | 15.7% | 9,794,900 | 15.1% | 16,055 | 4.8% | 10,865 | 5.8% |
| 15 | Copenhagen (CPH) | 2,004,000 | 3.0% | 10,139,900 | 5.5% | 22,762 | -4.0% | N/A | N/A |
| 16 | Milan-Malpensa (MXP) | 1,985,600 | 11.4% | 10,229,400 | 11.6% | 21,910 | 8.8% | 33,768 | 3.1% |
| 17 | Oslo (OSL) | 1,739,000 | 10.4% | 8,431,800 | 10.9% | 18,468 | 6.3% | 5,295 | 0.0% |
| 18 | Zurich (ZRH) | 1,715,100 | 10.6% | 8,947,800 | 6.0% | 19,098 | -4.7% | 19,916 | -2.4% |
| 19 | Stockholm-Arlanda (ARN) | 1,655,700 | 0.2% | 8,804,300 | 4.2% | 18,284 | -4.4% | 3,988 | -24.1% |
| 20 | Düsseldorf (DUS) | 1,644,500 | 14.6% | 7,675,200 | 8.2% | 18,107 | 7.0% | 4,918 | 10.3% |
| 21 | Vienna (VIE) | 1,575,300 | 5.4% | 7,859,500 | 8.1% | 20,851 | 1.8% | 15,020 | 6.4% |
| 22 | Brussels (BRU) | 1,545,100 | 3.5% | 7,842,100 | 4.3% | 20,690 | -0.2% | 46,800 | -13.6% |
| 23 | Moscow-Domodedovo (DME) | 1,523,000 | 9.7% | 6,633,300 | 12.2% | 13,899 | 13.4% | 10,988 | 18.9% |
| 24 | Athens (ATH) | 1,437,700 | 5.9% | 6,740,700 | 2.4% | 15,396 | 7.9% | 9,577 | 9.3% |
| 25 | Malaga (AGP) | 1,290,600 | 3.9% | 6,062,500 | 3.7% | 11,083 | 3.1% | 430 | 4.2% |
| 26 | Prague (PRG) | 1,147,100 | 7.3% | 5,117,800 | 5.5% | 15,063 | 2.3% | 3,955 | 17.4% |

| Airports | | Passengers | | | | Commercial movements | | Freight (metric tonnes) | |
|----------|---|------------|---------------------------------|-------------------|---------------------------------|----------------------|---------------------------------|----------------------------|---------------------------------|
| | | June 2006 | 2006v 2005 variation % | January – June | 2006v 2005 variation % | June 2006 | 2006v 2005 variation % | June 2006 | 2006v 2005 variation % |
| 27 | Helsinki (HEL) | 1,144,900 | 10.3% | 5,999,000 | 8.6% | 15,411 | 7.7% | 9,383 | -5.3% |
| 28 | Hamburg (HAM) | 1,070,100 | 9.5% | 5,722,500 | 15.3% | N/A | N/A | 2,649 | 29.7% |
| 29 | Lisbon (LIS) | 1,048,100 | 9.2% | 5,627,300 | 9.0% | 11,370 | 7.3% | 7,791 | 5.6% |
| 30 | Berlin (TXL) | 1,025,100 | -4.8% | 5,600,900 | 1.4% | 11,493 | -6.0% | 1,272 | 24.8% |
| 31 | Nice (NCE) | 1,023,200 | 4.3% | 4,678,400 | 2.8% | 11,761 | 3.9% | 967 | 4.8% |
| 32 | Cologne/Bonn (CGN) | 969,700 | 11.3% | 4,647,500 | 6.2% | 12,984 | 0.4% | 58,917 | 9.1% |
| 33 | Stuttgart (STR) | 966,900 | 16.9% | 4,847,200 | 12.7% | N/A | N/A | 1,511 | 3.6% |
| 34 | Milan Linate (LIN) | 907,000 | 7.0% | 4,822,600 | 9.6% | 8,797 | 9.1% | 1,725 | 23.7% |
| 35 | Glasgow (GLA) | 892,600 | 0.0% | 3,985,400 | 0.9% | 8,890 | -3.0% | 459 | -51.1% |
| 36 | Birmingham (BHX) | 891,100 | -7.2% | 4,262,900 | 0.4% | 9,959 | -7.2% | 1,425 | 2.2% |
| 37 | Alicante (ALC) | 875,800 | 2.2% | 4,072,600 | 0.6% | 6,903 | 4.5% | 419 | 5.8% |
| 38 | Edinburgh (EDI) | 817,300 | 3.4% | 4,094,200 | 2.2% | 10,360 | -0.9% | 4,318 | 89.4% |
| 39 | Budapest (BUD) | 808,000 | 4.5% | 3,822,500 | 6.9% | 10,791 | 2.5% | 5,365 | 18.6% |
| 40 | Warsaw (WAW) | 797,400 | 12.2% | 3,693,300 | 14.6% | 11,313 | 10.7% | 4,016 | 16.0% |
| 41 | Geneva (GVA) | 779,700 | 6.0% | 5,133,000 | 5.5% | 9,495 | -0.3% | 2,386 | -10.3% |
| 42 | Gran Canaria (LPA) | 704,800 | 7.5% | 5,081,300 | 6.0% | 8,018 | 5.3% | 2,886 | -3.1% |
| 43 | Ibiza (IBZ) | 643,000 | 10.4% | 1,545,600 | 10.3% | 5,833 | 9.8% | 501 | 6.3% |
| 44 | Venice (VCE) | 616,900 | 7.3% | 2,931,200 | 6.5% | 6,899 | 3.0% | 1,969 | 19.0% |
| 45 | Lyon (LYS) | 613,000 | 2.4% | 3,355,500 | 1.4% | 10,893 | 0.1% | 4,032 | 21.6% |
| 46 | Faro (FAO) | 606,300 | 7.8% | 2,189,000 | 7.6% | 4,109 | 8.1% | 148 | 49.1% |
| 47 | Tenerife Sur (TFS) | 589,300 | 12.6% | 4,278,900 | 5.0% | 4,208 | 7.7% | 705 | 7.6% |
| 48 | Marseille (MRS) | 575,900 | 4.1% | 2,860,600 | 1.6% | 7,980 | 3.6% | 3,615 | -6.5% |
| 49 | Toulouse (TLS) | 561,900 | 5.5% | 2,951,700 | 1.7% | 7,204 | 4.1% | 5,013 | 6.6% |
| 50 | Hanover (HAJ) | 560,200 | 10.8% | 2,615,500 | 4.1% | 6,596 | 4.9% | 439 | 15.2% |
| 51 | Moscow- Vnukovo (VKO) | 545,000 | 62.0% | 2,130,700 | 50.8% | 9,671 | 37.5% | 1,498 | -9.4% |
| 52 | Naples (NAP) | 515,400 | 11.0% | 2,293,500 | 8.6% | 4,689 | 3.1% | 142 | -22.8% |
| 53 | Nottingham East Midlands (EMA) | 496,600 | 16.2% | 2,094,800 | 8.3% | 5526 | 6.6% | 24,737 | 9.5% |

| Airports | | Passengers | | | | Commercial movements | | Freight (metric tones) | |
|----------|---------------------------|------------|---------------------------------|-------------------|---------------------------------|----------------------|---------------------------------|---------------------------|---------------------------------|
| | | June 2006 | 2006v 2005 variation % | January – June | 2006v 2005 variation % | June 2006 | 2006v 2005 variation % | June 2006 | 2006v 2005 variation % |
| 54 | Milan/Orio al Serio (BGY) | 491,100 | 14.5% | 2,402,800 | 21.1% | N/A | N/A | 12,395 | 6.7% |
| 55 | Liverpool (LPL) | 452,300 | 9.0% | N/A | N/A | 4,259 | -7.6% | 480 | -38.7% |
| 56 | Valencia (VLC) | 445,300 | 6.1% | 2,290,000 | 10.7% | 6,147 | 0.4% | 1,116 | 5.6% |
| 57 | Lanzarote (ACE) | 437,300 | 6.0% | 2,616,100 | 2.5% | 3,642 | 10.5% | 527 | 8.6% |
| 58 | Rome-Ciampino (CIA) | 426,300 | 14.8% | 2,319,500 | 26.7% | 3,461 | 5.7% | 2,118 | 11.4% |
| 59 | Bergen (BGO) | 420,500 | 13.0% | 2,084,400 | 12.4% | 6,452 | 8.6% | 241 | -40.5% |
| 60 | Goteborg (GOT) | 410,300 | 3.6% | 2,106,200 | 5.3% | 5,633 | 2.3% | 5,009 | -4.6% |
| 61 | Menorca (MAH) | 397,600 | 6.0% | 959,500 | 5.0% | 3,612 | 12.1% | 388 | 2.5% |
| 62 | Basel-Mulhouse (BSL/ML) | 387,700 | 34.0% | 1,842,400 | 31.2% | 5,111 | -2.2% | 2,354 | -4.1% |
| 63 | Bologna (BLQ) | 378,500 | 6.1% | 1,850,700 | 8.2% | 5,250 | 8.4% | 2,447 | 15.5% |
| 64 | Girona (GRO) | 353,500 | -1.4% | 1,680,900 | 4.0% | 2,292 | 0.7% | 115 | 2706.6% |
| 65 | Nuremberg (NUE) | 353,000 | 24.6% | 1,991,700 | 3.5% | 5,404 | 12.8% | 984 | 9.9% |
| 66 | Bilbao (BIO) | 351,800 | 1.3% | 1,815,600 | 3.8% | 4,570 | -2.3% | 318 | -6.6% |
| 67 | Hahn (HHN) | 350,200 | 27.0% | 1,688,600 | 17.9% | 3,298 | -0.5% | N/A | N/A |
| 68 | Tenerife Norte (TFN) | 349,300 | 12.2% | 1,972,000 | 10.9% | 4,729 | 10.0% | 1,965 | 3.0% |
| 69 | Fuerteventura (FUE) | 343,300 | 14.8% | 2,040,200 | 8.7% | 3,249 | 12.5% | 249 | 10.8% |
| 70 | Bucharest (OTP) | 323,000 | 13.2% | 1,566,000 | 14.3% | 4,917 | 8.8% | 1,325 | 8.4% |
| 71 | Sevilla (SVQ) | 321,700 | 11.3% | 1,872,000 | 13.8% | 3,731 | 5.7% | 1,003 | 68.1% |
| 72 | Bordeaux (BOD) | 319,800 | -0.8% | 1,571,500 | 4.3% | 4,524 | 0.2% | 755 | -12.5% |
| 73 | Trondheim (TRD) | 298,400 | 8.9% | 1,527,200 | 7.3% | 4,101 | 4.9% | 178 | -10.6% |
| 74 | Stavanger (SVG) | 292,300 | 12.3% | 1,494,000 | 11.4% | 4,369 | 14.0% | 348 | 17.5% |
| 75 | Porto (OPO) | 288,700 | 10.5% | 1,503,900 | 8.1% | 4,012 | 5.7% | 3,014 | 50.0% |
| 76 | Aberdeen (ABZ) | 286,700 | 11.0% | 1,498,000 | 12.0% | 8,559 | 6.2% | 369 | 0.8% |
| 77 | Turin (TRN) | 278,800 | 2.8% | 1,699,300 | 2.9% | 3,822 | 4.9% | 145 | -42.2% |
| 78 | Malta (MLA) | 260,900 | -3.6% | 1,168,000 | -2.2% | 2,630 | -10.1% | 1,359 | 4.9% |
| 79 | Olbia (OLB) | 240,500 | 12.7% | N/A | N/A | 2,445 | 10.2% | 70 | 0.0% |

| Airports | | Passengers | | | | Commercial movements | | Freight (metric tonnes) | |
|----------|------------------------------------|------------|---------------------------------|-------------------|---------------------------------|----------------------|---------------------------------|----------------------------|---------------------------------|
| | | June 2006 | 2006v 2005 variation % | January – June | 2006v 2005 variation % | June 2006 | 2006v 2005 variation % | June 2006 | 2006v 2005 variation % |
| 80 | Riga (RIX) | 232,300 | 28.6% | 1,132,200 | 39.6% | 3,506 | 19.1% | 1,114 | -4.8% |
| 81 | Glasgow Prestwick (PIK) | 226,800 | 6.9% | 1,104,400 | 0.1% | 1,760 | -4.5% | 2,631 | -2.0% |
| 82 | Charleroi (CRL) | 195,500 | 21.7% | 987,700 | 9.4% | 1,257 | 20.3% | N/A | N/A |
| 83 | Southampton (SOU) | 186,800 | 3.2% | 886,600 | 5.9% | 4,265 | 5.7% | 14 | -44.0% |
| 84 | Madeira (FNC) | 185,500 | 2.7% | N/A | N/A | 2,000 | -1.4% | 560 | -24.2% |
| 85 | Florence (FLR) | 180,600 | 11.1% | N/A | N/A | 2,407 | 0.9% | 18 | -86.6% |
| 86 | Malmo (MMX) | 173,300 | 3.5% | 969,400 | 6.4% | 2,339 | 2.0% | 3,456 | 20.9% |
| 87 | Dubrovnik (DBV) | 156,900 | 5.4% | 423,600 | 4.1% | 1,540 | 5.0% | 69 | 0.3% |
| 88 | Vilnius (VNO) | 155,900 | 12.3% | 659,200 | 13.1% | 2,594 | -1.0% | 364 | 2.0% |
| 89 | Tromsø (TOS) | 153,000 | 7.7% | 759,200 | 6.7% | 2,750 | 10.7% | 198 | -12.3% |
| 90 | Stockholm- Bromma (BMA) | 143,000 | 22.2% | 816,900 | 19.7 | 2,622 | -1.2% | 6 | -14.3% |
| 91 | Bodø (BOO) | 137,900 | 6.3% | 664,600 | 3.0% | 3,255 | -1.5% | 132 | -11.2% |
| 92 | Ljubljana (LJU) | 129,900 | 7.6% | 565,500 | 10.9% | 2,687 | 13.5% | 697 | 71.7% |
| 93 | Bournemouth (BOH) | 91,300 | 4.1% | 453,700 | 30.1% | N/A | N/A | 952 | -8.5% |
| 94 | Kristiansand (KRS) | 76,800 | 9.3% | 391,100 | 5.4% | 1,623 | 2.9% | 51 | 7.8% |
| 95 | Aalesund (AES) | 68,600 | 6.9% | 354,200 | 6.1% | 878 | 5.4% | 83 | -3.3% |
| 96 | Humberside (HUY) | 64,043 | 22.6% | 221,900 | 8.7% | 1,432 | 24.7% | 273 | 123.8% |
| 97 | Skopje (SKP) | 48,000 | 1.0% | 236,300 | 3.6% | 833 | 2.2% | 139 | -16.5% |
| 98 | Haugesund (HAU) | 44,400 | 11.8% | 223,400 | 5.8% | 670 | -13.0% | 25 | -15.6% |
| 99 | Liege (LGG) | 34,600 | 49.5% | 115,100 | 55.3% | 2,190 | 12.9% | 33,409 | 32.7% |
| 100 | Strasbourg (SXB) | N/A | N/A | N/A | N/A | N/A | N/A | N/A | N/A |
| 101 | Katowice (KTW) | N/A | N/A | N/A | N/A | N/A | N/A | N/A | N/A |
| 102 | Ohrid (OHD) | N/A | N/A | N/A | N/A | N/A | N/A | N/A | N/A |

----- Preliminary traffic figures -----

*Terminal passengers

**Freight & Mail

*** N/A due to privatisation of airport

Total commercial passengers

International passengers (enplaned + deplaned) + **domestic passengers** (enplaned + deplaned) + **direct transit passengers** (passengers who arrive at and depart from the airport on a flight bearing the same number. They are counted only ONCE).

Commercial movements

Landing or take off of an aircraft operating a scheduled or non scheduled commercial service.

Freight

Freight loaded and unloaded (arriving or departing) at the airport. Freight comprises goods, newspapers, diplomatic bags, parcel post and express parcel.

**The ten largest airports on freight – reporting to
ACI EUROPE**
(metric tonnes)

| Airports | | June 2006 | 2006v2005 variation % |
|----------|---|-----------|--------------------------|
| 1 | Frankfurt (FRA) | 166,784 | 9.2% |
| 2 | Amsterdam (AMS) | 124,223 | 8.4% |
| 3 | London Heathrow (LHR) | 107,263 | -2.4% |
| 4 | Cologne/Bonn (CGN) | 58,917 | 9.1% |
| 5 | Brussels (BRU) | 46,800 | -13.6% |
| 6 | Milan-Malpensa (MXP) | 33,768 | 3.1% |
| 7 | Liege (LGG) | 33,409 | 32.7% |
| 8 | Nottingham East Midlands (EMA) | 24,737 | 9.5% |
| 9 | Madrid (MAD) | 24,588 | -8.7% |
| 10 | London Stansted (STN) | 20,857 | -0.5% |

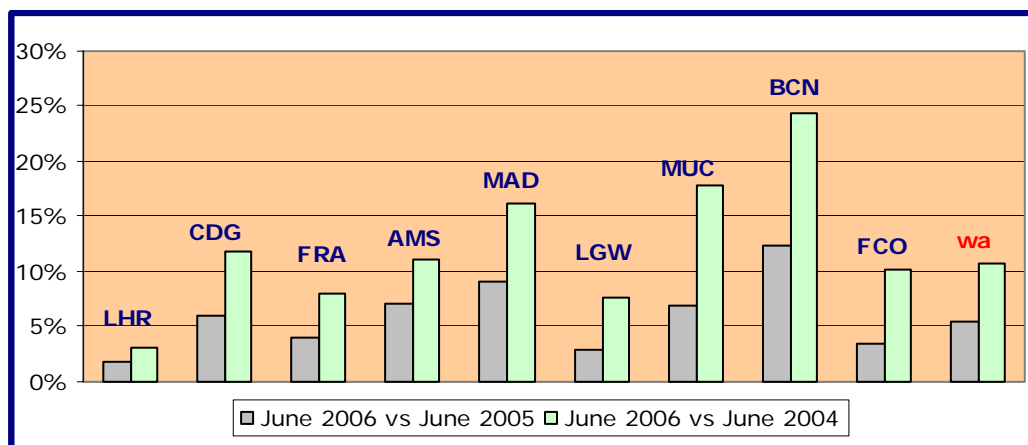
* Table only includes airports that send statistics regarding freight to ACI EUROPE

Group 1

**Airports welcoming more than 25 million passengers per year
(percentage traffic variation June 2006 versus 2005 and 2004)**

| Airport | 2006v2005 variation % | 2006v2004 variation % |
|------------|-----------------------|-----------------------|
| LHR | +1.9% | +3.0% |
| CDG | +6.0% | +11.8% |
| FRA | +4.0% | +8.0% |
| AMS | +7.2% | +11.1% |
| MAD | +9.1% | +16.2% |
| LGW | +2.9% | +7.7% |
| MUC | +6.9% | +17.9% |
| BCN | +12.4% | +24.4% |
| FCO | +3.5% | +10.2% |
| wa* | +5.5% | +10.8% |

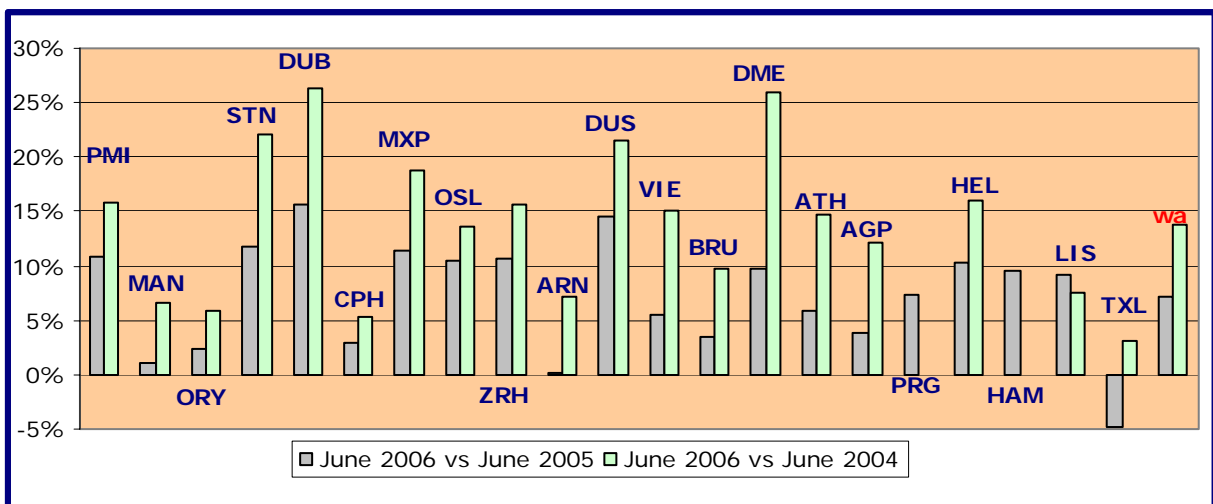
*weighted average=SUM(%change*pax)/SUM(pax)



Group 2
Airports welcoming between 10 and 25 million passengers
per year (percentage traffic variation June 2006 versus 2005 and 2004)

| Airport | 2006v2005 variation % | 2006v2004 variation % |
|------------|-----------------------|-----------------------|
| PMI | +10.8% | +15.8% |
| MAN | +1.0% | +6.6% |
| ORY | +2.4% | +5.9% |
| STN | +11.8% | +22.1% |
| DUB | +15.7% | +26.4% |
| CPH | +3.0% | +5.2% |
| MXP | +11.4% | +18.7% |
| OSL | +10.4% | +13.7% |
| ZRH | +10.6% | +15.6% |
| ARN | +0.2% | +7.2% |
| DUS | +14.6% | +21.5% |
| VIE | +5.4% | +15.1% |
| BRU | +3.5% | +9.7% |
| DME | +9.7% | +26.0% |
| ATH | +5.9% | +14.7% |
| AGP | +3.9% | +12.1% |
| PRG | +7.3% | N/A |
| HEL | +10.3% | +15.9% |
| HAM | +9.5% | N/A |
| LIS | +9.2% | +7.6% |
| TXL | -4.8% | +3.1% |
| wa* | +7.2% | +13.7% |

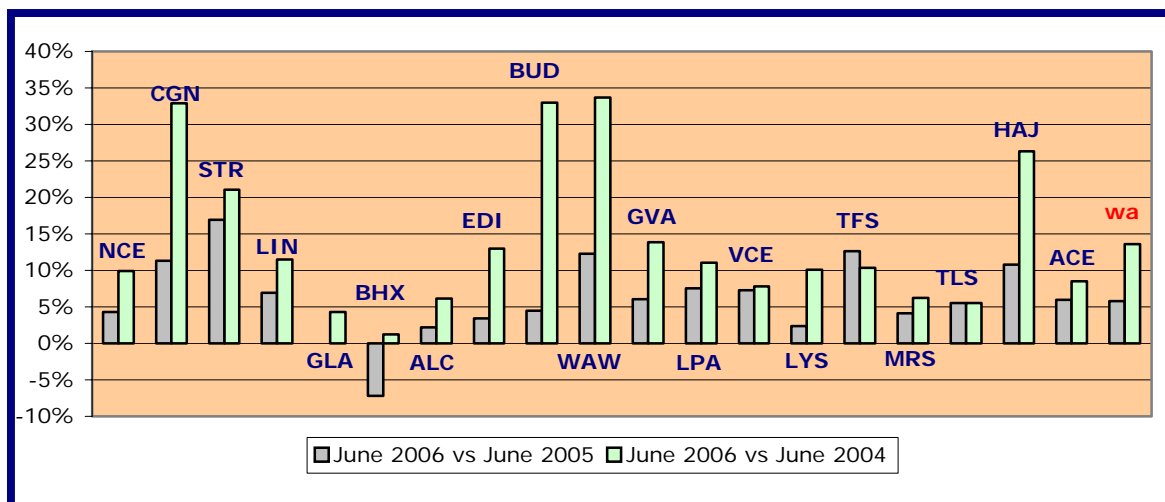
*weighted average=SUM(%change*pax)/SUM(pax)



Group 3
Airports welcoming between 5 and 10 million passengers
per year (percentage traffic variation June 2006 versus 2005 and 2004)

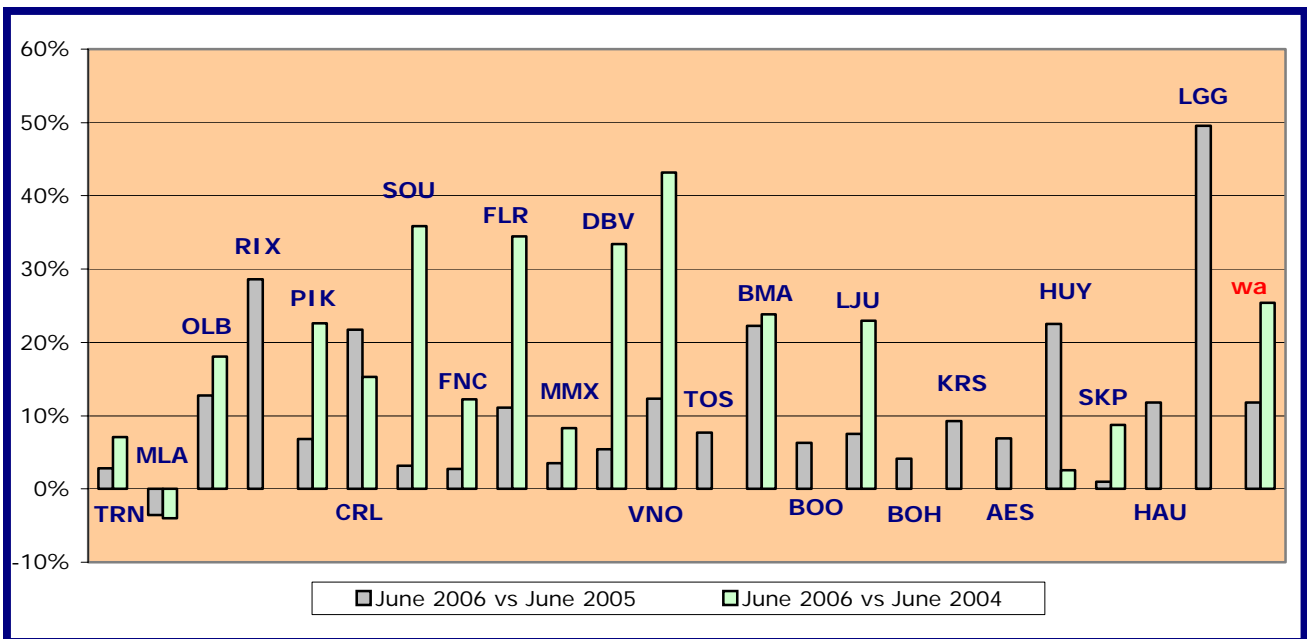
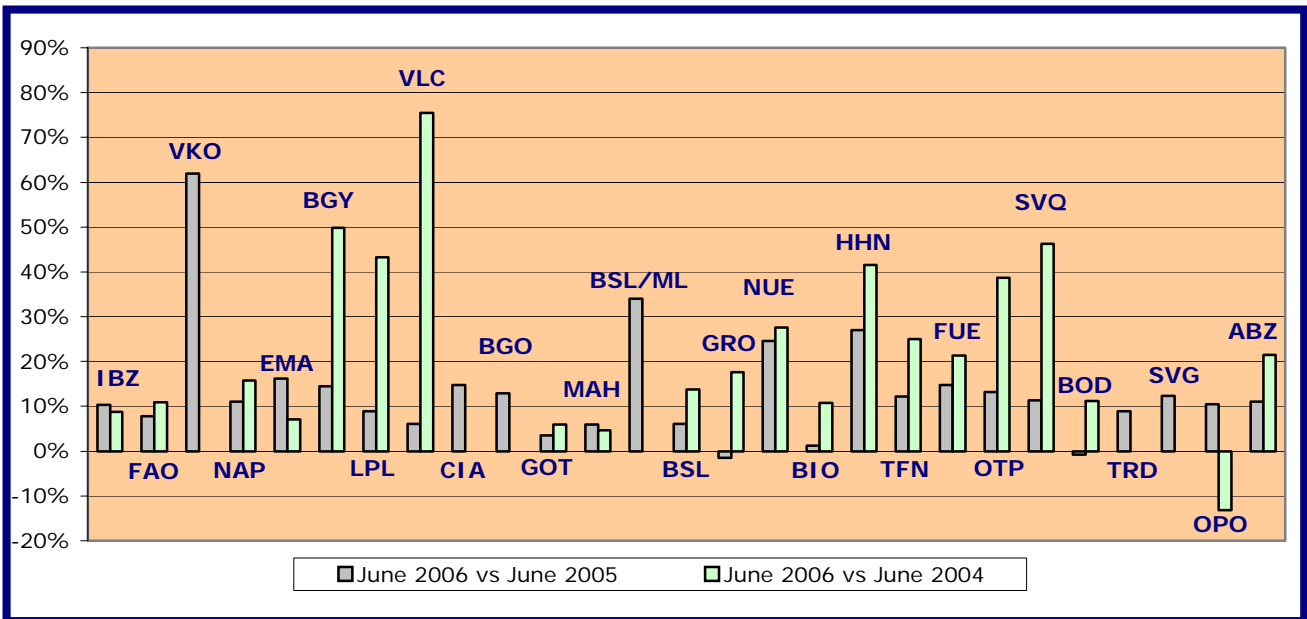
| Airport | 2006v2005 variation % | 2006v2004 variation % |
|------------|-----------------------|-----------------------|
| NCE | +4.3% | +9.9% |
| CGN | +11.3% | +32.9% |
| STR | +16.9% | +21.1% |
| LIN | +7.0% | +11.5% |
| GLA | ±0.0% | +4.3% |
| BHX | -7.2% | +1.2% |
| ALC | +2.2% | +6.2% |
| EDI | +3.4% | +12.9% |
| BUD | +4.5% | +33.0% |
| WAW | +12.2% | +33.7% |
| GVA | +6.0% | +13.8% |
| LPA | +7.5% | +11.0% |
| VCE | +7.3% | +7.8% |
| LYS | +2.4% | +10.1% |
| TFS | +12.6% | +10.3% |
| MRS | +4.1% | +6.2% |
| TLS | +5.5% | +5.5% |
| HAJ | +10.8% | +26.3% |
| ACE | +6.0% | +8.5% |
| wa* | +5.8% | +13.6% |

*weighted average=SUM(%change*pax)/SUM(pax)



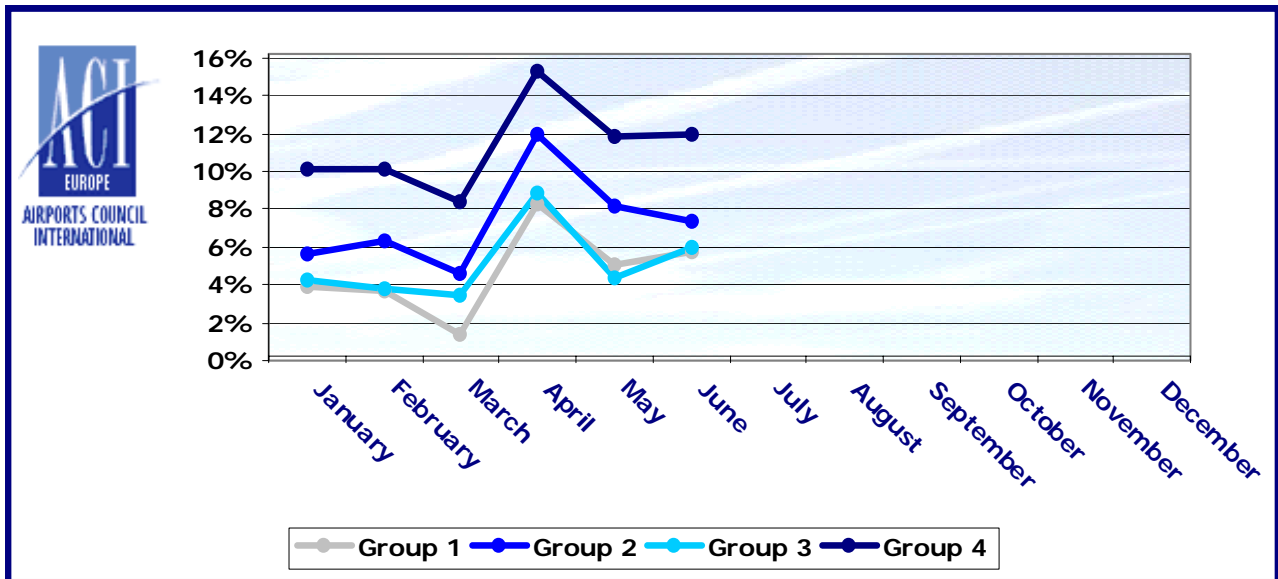
| Group 4 | | |
|---|------------------------------|------------------------------|
| Airports welcoming less than 5 million passengers | | |
| per year (percentage traffic variation June 2006 versus 2005 and 2004) | | |
| Airport | 2006v2005 variation % | 2006v2004 variation % |
| IBZ | +10.4% | +8.8% |
| FAO | +7.8% | +11.0% |
| VKO | +62.0% | +154.2% |
| NAP | +11.0% | +15.7% |
| EMA | +16.2% | +7.1% |
| BGY | +14.5% | +49.8% |
| LPL | +9.0% | +43.3% |
| VLC | +6.1% | +75.5% |
| CIA | +14.8% | +124.0% |
| BGO | +13.0% | N/A |
| GOT | +3.6% | +5.9% |
| MAH | +6.0% | +4.7% |
| BSL/ML | +34.0% | N/A |
| BLQ | +6.1% | +13.7% |
| GRO | -1.4% | +17.7% |
| NUE | +24.6% | +27.5% |
| BIO | +1.3% | +10.7% |
| HHN | +27.0% | +41.5% |
| TFN | +12.2% | +25.1% |
| FUE | +14.8% | +21.3% |
| OTP | +13.2% | +38.8% |
| SVQ | +11.3% | +46.2% |
| BOD | -0.8% | +11.2% |
| TRD | +8.9% | N/A |
| SVG | +12.3% | N/A |
| OPO | +10.5% | -13.2% |
| ABZ | +11.0% | +21.5% |
| TRN | +2.8% | +7.1% |
| MLA | -3.6% | -4.0% |
| OLB | +12.7% | +18.0% |
| RIX | +28.6% | +126.1% |
| PIK | +6.9% | +22.6% |
| CRL | +21.7% | +15.3% |
| SOU | +3.2% | +35.9% |
| FNC | +2.7% | +12.3% |
| FLR | +11.1% | +34.4% |
| MMX | +3.5% | +8.3% |
| DBV | +5.4% | +33.4% |
| VNO | +12.3% | +43.2% |
| TOS | +7.7% | N/A |
| BMA | +22.2% | +23.8% |
| BOO | +6.3% | N/A |
| LJU | +7.6% | +22.9% |
| BOH | +4.1% | +98.4% |
| KRS | +9.3% | N/A |
| AES | +6.9% | N/A |
| HUY | +22.6% | +2.5% |
| SKP | +1.0% | +8.7% |
| HAU | +11.8% | N/A |
| LGG | +49.5% | +74.6% |
| wa* | +11.8% | +25.9% |

*weighted average=SUM(%change*pax)/SUM(pax)

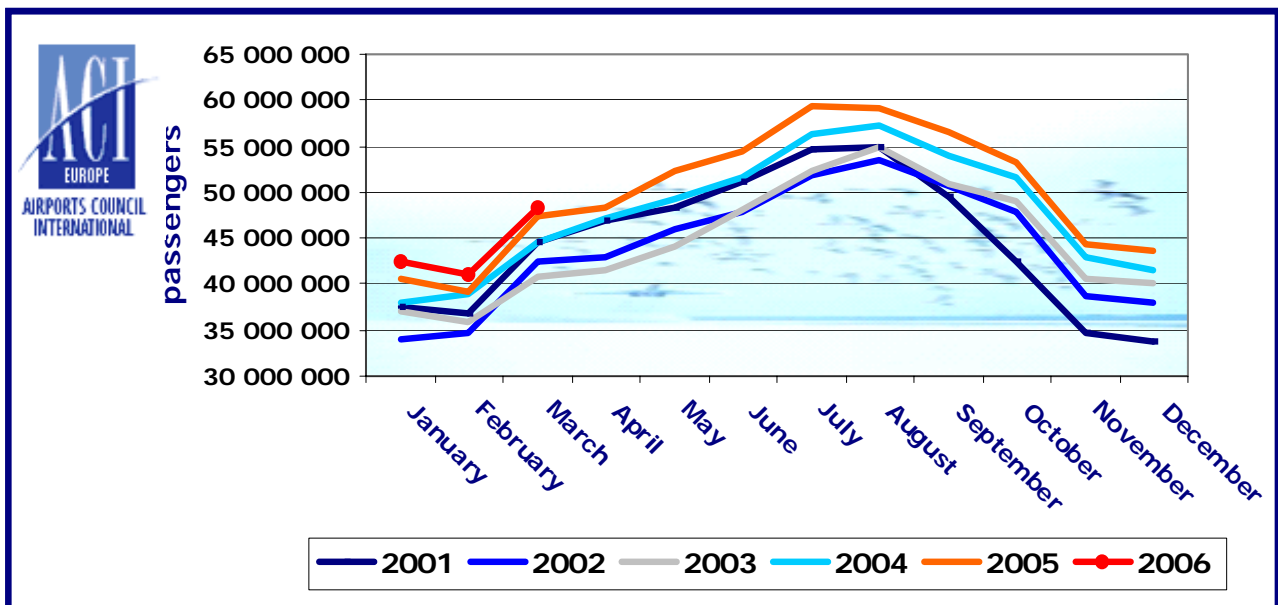


Year-to-date airport passenger trends

The graphic illustrates and compares the trends of the different airport Groups 1, 2, 3 and 4 for 2006.



The graphic compares the amount of total commercial passengers 2006 with 2005, 2004, 2003, 2002 and 2001. The airports included, in this graphic, are: London Heathrow, Frankfurt, Paris Roissy, Amsterdam, London Gatwick, Madrid, Rome-Fiumicino, Barcelona, Manchester, Munich, Paris Orly, Milan-Malpensa, London Stansted, Zurich, Dublin, Copenhagen, Brussels, Stockholm-Arlanda, Vienna, Düsseldorf and Lisbon.



* Please note that the graph will be updated as soon as all Paris data is available