



# Airport Traffic Report

## August 2007

## European passenger traffic up 7.9% during August 2007

The 'ACI EUROPE Airport Traffic Report - August 2007' includes **102 airports** in total.

The overall **passenger** traffic at European airports increased by **+7.9%** in **August 2007** compared with August 2006. The overall **freight** traffic among European airports increased **+5.1%** in August 2007 when compared with the corresponding month in 2006. The overall figure for **movements** at European airports increased **+4.3%** in August 2007 when compared with August 2006.

Passenger figures for August 2007 once again indicate that Group 4 airports (airports welcoming less than 5 million passengers per year) had the largest increase in traffic - with an average increase of **+10.2%** when compared with August 2006 - and an average increase of **+17.9%** when compared with August 2005.

Airports welcoming more than 25 million passengers per year (Group 1), airports welcoming between 10 and 25 million passengers (Group 2) and airports welcoming between 5 and 10 million passengers (Group 3) reported an average increase of **+7.9%**, **+7.5%** and **+6.5%** respectively when compared with August 2006. The same comparison of August 2007 with August 2005 demonstrates an average increase of **+10.3%**, **+13.6%** and **+10.8%** respectively.

Examples of airports that experienced the highest increase in passenger traffic per group, when comparing August 2007 with August 2006, include:

- **Group 1 airports** – Madrid (**+14.6%**), Barcelona (**+13.4%**) and Munich (**12.7%**);
- **Group 2 airports** – Moscow- Domodedovo (**+22.9%**), Berlin (**+16.7%**) and Athens (**+11.9%**);
- **Group 3 airports** – Moscow-Vnukovo (**+19.5%**), Marseille (**+16.4%**) and Geneva (**+16.2%**);
- **Group 4 airports** – Girona (**+40.7%**), Riga (**+29.4%**) and Sevilla (**+26.4%**).

Airports		Passengers				Commercial movements		Freight (metric tonnes)	
		August 2007	2007v 2006 variation %	January – August	2007v 2006 variation %	August 2007	2007v 2006 variation %	August 2007	2007v 2006 variation %
1	<b>London Heathrow</b> (LHR)	6,400,100	6.5%	45,553,500	-0.2%	41,525	4.8%	109,516	7.8%
2	<b>Paris Roissy</b> (CDG)	5,868,400	9.1%	40,326,800	5.7%	48,593	3.0%	N/A	N/A
3	<b>Frankfurt</b> (FRA)	5,114,000	1.7%	35,998,100	2.3%	42,164	1.1%	171,902	4.6%
4	<b>Madrid</b> (MAD)	4,900,700	14.6%	34,444,500	14.5%	40,152	10.9%	23,305	0.2%
5	<b>Amsterdam</b> (AMS)	4,821,400	3.8%	32,138,800	3.9%	40,136	2.8%	130,053	8.5%
6	<b>London Gatwick</b> (LGW)	3,971,600	4.0%	23,848,900	2.5%	25,661	2.9%	13,434	-18.2%
7	<b>Barcelona</b> (BCN)	3,407,400	13.4%	22,079,700	10.2%	30,906	9.1%	6,832	7.9%
8	<b>Palma de Mallorca</b> (PMI)	3,283,800	3.9%	16,230,900	3.2%	24,295	1.8%	2,167	4.8%
9	<b>Rome-Fiumicino</b> (FCO)	3,249,100	10.9%	21,811,100	8.2%	29,075	7.8%	10,027	7.6%
10	<b>Munich</b> (MUC)	3,170,900	12.7%	22,383,500	11.0%	35,401	4.7%	20,515	13.7%
11	<b>London Stansted</b> (STN)	2,532,100	7.0%	16,298,500	1.6%	18,109	5.0%	18,384	1.5%
12	<b>Manchester</b> (MAN)	2,530,100	-0.2%	15,178,000	-2.0%	20,240	-3.1%	13,932	13.8%
13	<b>Milan-Malpensa</b> (MXP)	2,505,800	8.3%	16,078,900	9.0%	24,523	5.1%	32,345	11.9%
14	<b>Dublin</b> (DUB)	2,423,500	9.4%	15,712,400	10.0%	18,167	6.6%	N/A	N/A
15	<b>Paris Orly</b> (ORY)	2,418,900	5.6%	17,998,600	4.0%	18,956	2.6%	N/A	N/A
16	<b>Moscow-Domodedovo</b> (DME)	2,234,000	22.9%	12,243,000	20.2%	18,353	19.8%	10,757	-2.9%
17	<b>Copenhagen</b> (CPH)	2,017,200	4.7%	14,348,400	2.8%	22,859	1.4%	N/A	N/A
18	<b>Zurich</b> (ZRH)	1,968,800	6.1%	13,652,700	7.5%	20,087	-4.5%	21,191	5.8%
19	<b>Athens</b> (ATH)	1,894,300	11.9%	11,168,900	10.3%	18,576	6.6%	8,652	3.6%
20	<b>Vienna</b> (VIE)	1,814,700	10.5%	12,233,700	9.2%	22,539	7.9%	15,227	4.0%
21	<b>Brussels</b> (BRU)	1,796,900	8.2%	11,835,600	4.7%	21,011	-1.1%	58,483	10.4%
22	<b>Oslo</b> (OSL)	1,765,000	5.4%	12,612,500	7.0%	19,303	6.2%	5,377	1.8%
23	<b>Düsseldorf</b> (DUS)	1,719,300	8.1%	11,746,400	7.1%	18,714	4.9%	5,189	-11.2%
24	<b>Stockholm-Arlanda</b> (ARN)	1,575,200	3.0%	11,814,200	0.8%	16,855	-2.6%	N/A	N/A
25	<b>Malaga</b> (AGP)	1,546,600	8.4%	9,271,200	3.9%	12,934	3.0%	537	-9.8%
26	<b>Lisbon</b> (LIS)	1,488,700	8.3%	8,977,700	8.6%	12,988	5.5%	6,137	-11.6%

Airports		Passengers				Commercial movements		Freight (metric tonnes)	
		August 2007	2007v 2006 variation %	January – August	2007v 2006 variation %	August 2007	2007v 2006 variation %	August 2007	2007v 2006 variation %
27	Prague (PRG)	1,295,900	0.5%	8,172,600	6.6%	15,890	3.2%	3,790	4.2%
28	Berlin (TXL)	1,203,500	16.7%	8,476,700	9.9%	12,294	10.1%	1,293	13.5%
29	Hamburg (HAM)	1,189,700	9.7%	8,329,400	5.0%	13,150	5.1%	7,311	14.5%
30	Nice (NCE)	1,141,100	7.5%	7,162,300	4.2%	13,976	5.8%	622	-21.7%
31	Helsinki (HEL)	1,139,400	8.6%	8,614,100	6.4%	14,747	2.1%	11,208	2.2%
32	Stuttgart (STR)	1,062,200	4.0%	6,851,300	1.1%	11,535	2.1%	1,663	9.5%
33	Alicante (ALC)	1,030,600	5.2%	6,124,800	1.6%	8,059	3.8%	311	-23.2%
34	Cologne/Bonn (CGN)	1,017,600	5.7%	6,946,700	5.5%	12,602	1.0%	59,468	9.6%
35	Birmingham (BHX)	1,005,900	2.2%	6,213,200	0.1%	9,660	-5.4%	1,283	-6.5%
36	Budapest (BUD)	976,200	3.8%	5,761,500	2.6%	11,347	-1.4%	4,461	-15.7%
37	Warsaw (WAW)	964,900	14.0%	6,125,600	13.7%	12,264	3.7%	4,519	12.9%
38	Ibiza (IBZ)	959,000	9.2%	3,464,600	7.3%	9,809	8.3%	552	-3.7%
39	Geneva (GVA)	944,300	16.2%	7,470,900	9.5%	10,737	13.6%	2,244	-3.7%
40	Edinburgh (EDI)	895,400	10.1%	6,059,900	5.0%	10,349	-0.7%	1,717	-46.1%
41	Glasgow (GLA)	874,000	0.9%	5,907,900	0.2%	8,650	-3.6%	382	-32.9%
42	Gran Canaria (LPA)	850,900	0.0%	6,752,800	-0.5%	9,091	1.7%	2,497	-11.5%
43	Moscow-Vnukovo (VKO)	811,500	19.5%	4,296,236	24.9%	12,132	14.9%	1,807	17.3%
44	Milan Linate (LIN)	803,100	5.8%	6,640,500	2.0%	7,664	0.4%	1,017	-15.4%
45	Tenerife Sur (TFS)	794,900	-4.1%	5,675,500	-2.6%	5,423	-2.2%	806	9.7%
46	Venice (VCE)	746,700	13.0%	4,751,100	11.5%	7,697	8.6%	1,742	-4.0%
47	Faro (FAO)	737,900	9.2%	3,843,700	8.5%	5,068	10.4%	79	-35.7%
48	Marseille (MRS)	704,900	16.4%	4,707,900	14.9%	8,449	8.0%	3,063	-0.3%
49	Lyon (LYS)	658,100	12.2%	4,937,900	7.5%	9,977	5.1%	2,394	-9.5%
50	Naples (NAP)	644,800	14.1%	3,834,000	12.9%	6,233	18.5%	111	2.6%
51	Valencia (VLC)	632,000	20.7%	3,975,200	20.3%	7,002	11.6%	798	4.0%
52	Lanzarote (ACE)	601,600	-1.7%	3,750,800	-0.3%	5,068	2.9%	488	-20.1%
53	Milan/Orio al Serio (BGY)	600,100	4.2%	3,887,600	10.2%	5,291	2.8%	8,228	-10.6%

Airports		Passengers				Commercial movements		Freight (metric tonnes)	
		August 2007	2007v 2006 variation %	January – August	2007v 2006 variation %	August 2007	2007v 2006 variation %	August 2007	2007v 2006 variation %
54	<b>Nottingham East Midlands</b> (EMA)	599,400	14.2%	3,657,700	16.6%	6,048	7.4%	21,592	-1.4%
55	<b>Hanover</b> (HAJ)	576,800	-2.2%	3,733,100	-2.1%	N/A	N/A	760	80.1%
56	<b>Liverpool</b> (LPL)	575,200	16.8%	3,773,600	13.7%	4,202	2.1%	280	-47.2%
57	<b>Girona</b> (GRO)	550,300	40.7%	3,187,600	29.5%	3,751	46.2%	0	-100.0%
58	<b>Menorca</b> (MAH)	529,100	5.7%	2,021,200	5.1%	5,089	-0.6%	462	7.8%
59	<b>Rome-Ciampino</b> (CIA)	497,200	8.9%	3,692,400	14.4%	3,491	0.4%	1,563	-2.6%
60	<b>Fuerteventura</b> (FUE)	487,300	2.0%	3,065,200	3.9%	4,255	0.9%	270	8.3%
61	<b>Toulouse</b> (TLS)	477,000	8.4%	4,114,300	3.9%	5,859	0.1%	3,414	-7.3%
62	<b>Porto</b> (OPO)	476,100	13.3%	2,664,200	16.1%	4,802	7.0%	2,741	-9.5%
63	<b>Bologna</b> (BLO)	469,400	3.5%	N/A	N/A	5,729	3.2%	873	0.5%
64	<b>Sevilla</b> (SVQ)	452,900	26.4%	2,997,300	16.7%	4,391	15.3%	487	-49.1%
65	<b>Bergen</b> (BGO)	419,400	4.4%	3,030,300	6.1%	6,392	2.8%	244	-3.2%
66	<b>Hahn</b> (HHN)	414,000	8.9%	2,762,200	13.4%	3,435	0.7%	8,733	-8.8%
67	<b>Basel-Mulhouse</b> (BSL/ML)	411,900	7.2%	2,905,100	10.3%	4,899	1.6%	3,226	9.0%
68	<b>Bilbao</b> (BIO)	408,800	8.6%	2,828,000	9.7%	4,593	2.7%	205	-11.2%
69	<b>Nuremberg</b> (NUE)	398,500	10.7%	2,790,100	4.7%	5,467	6.1%	871	-3.9%
70	<b>Malta</b> (MLA)	389,400	11.6%	1,988,700	7.9%	3,170	-1.7%	1,272	-9.2%
71	<b>Goteborg</b> (GOT)	384,700	1.0%	2,869,800	1.2%	5,292	-0.9%	4,364	5.4%
72	<b>Tenerife Norte</b> (TFN)	379,600	7.4%	2,754,100	2.8%	5,274	0.9%	1,997	16.3%
73	<b>Riga</b> (RIX)	329,000	29.4%	2,062,300	26.2%	4,309	18.1%	499	-58.9%
74	<b>Aberdeen</b> (ABZ)	316,300	13.2%	2,286,000	10.3%	9,400	5.2%	355	0.0%
75	<b>Bordeaux</b> (BOD)	310,200	12.5%	2,332,400	7.6%	4,113	4.6%	524	-15.6%
76	<b>Trondheim</b> (TRD)	295,900	5.4%	2,214,600	7.5%	3,971	2.2%	194	14.5%
77	<b>Turin</b> (TRN)	286,000	16.1%	2,368,100	6.1%	3,740	15.6%	49	-35.8%
78	<b>Stavanger</b> (SVG)	285,800	3.8%	2,160,600	7.1%	4,704	11.8%	234	-23.3%
79	<b>Madeira</b> (FNC)	249,400	-4.0%	1,643,500	0.8%	1,940	-13.5%	502	-18.0%

Airports		Passengers				Commercial movements		Freight (metric tonnes)	
		August 2007	2007v 2006 variation %	January - August	2007v 2006 variation %	August 2007	2007v 2006 variation %	August 2007	2007v 2006 variation %
80	Charleroi (CRL)	235,800	11.3%	1,610,900	14.0%	1,469	12.1%	2	367.7%
81	Southampton (SOU)	204,400	2.5%	1,315,000	2.5%	4,466	1.0%	23	91.7%
82	Dubrovnik (DBV)	200,800	7.6%	N/A	N/A	1,689	3.5%	86	0.3%
83	Florence (FLR)	186,600	2.2%	N/A	N/A	2,524	2.1%	3	-80.0%
84	Ljubljana (LJU)	183,500	8.8%	1,005,000	11.5%	3,233	13.2%	1,126	123.0%
85	Vilnius (VNO)	180,200	10.5%	N/A	N/A	2,763	4.0%	339	-1.2%
86	Malmö (MMX)	178,000	6.0%	1,263,600	-0.6%	2,343	2.9%	3,754	17.8%
87	Tromsø (TOS)	148,300	0.3%	1,086,400	3.2%	2,866	2.4%	185	-0.3%
88	Stockholm-Bromma (BMA)	142,800	11.0%	1,153,900	13.3%	2,696	5.8%	25	257.1%
89	Bodø (BOO)	135,900	2.7%	1,014,500	6.0%	3,311	0.2%	135	12.3%
90	Bournemouth (BOH)	121,000	23.8%	N/A	N/A	N/A	N/A	798	-11.5%
91	Strasbourg (SXB)	117,700	-13.3%	1,225,900	-7.0%	2,391	-11.2%	23	-32.4%
92	Skopje (SKP)	80,400	18.2%	430,800	15.9%	1,105	5.7%	149	5.5%
93	Kristiansand (KRS)	75,300	9.3%	574,700	8.3%	1,829	18.4%	44	6.6%
94	Aalesund (AES)	70,200	9.2%	504,400	4.7%	974	12.0%	95	35.0%
95	Liege (LGG)	66,600	15.1%	249,300	6.6%	2,458	11.1%	33,255	16.1%
96	Humbly Grove (HUY)	60,300	-14.8%	N/A	N/A	1,368	-10.4%	320	30.6%
97	Haugesund (HAU)	47,600	5.8%	336,700	8.3%	854	23.1%	27	21.7%
98	Ohrid (OHD)	7,400	-16.0%	34,500	-9.2%	110	-11.3%	1	238.7%
99	Glasgow Prestwick (PIK)	N/A	N/A	N/A	N/A	N/A	N/A	N/A	N/A
100	Bucharest (OTP)	N/A	N/A	N/A	N/A	N/A	N/A	N/A	N/A
101	Olbia (OLB)	N/A	N/A	N/A	N/A	N/A	N/A	N/A	N/A
102	Katowice (KTW)	N/A	N/A	N/A	N/A	N/A	N/A	N/A	N/A

----- Preliminary traffic figures -----

\*Terminal passengers

\*\*Freight & Mail

\*\*\* N/A due to runway closure

### **Total commercial passengers**

**International passengers** (enplaned + deplaned) + **domestic passengers** (enplaned + deplaned) + **direct transit passengers** (passengers who arrive at and depart from the airport on a flight bearing the same number. They are counted only ONCE).

### **Commercial movements**

Landing or take off of an aircraft operating a scheduled or non scheduled commercial service.

### **Freight**

Freight loaded and unloaded (arriving or departing) at the airport. Freight comprises goods, newspapers, diplomatic bags, parcel post and express parcel.

**The ten largest airports on freight – reporting to  
ACI EUROPE**  
(metric tonnes)

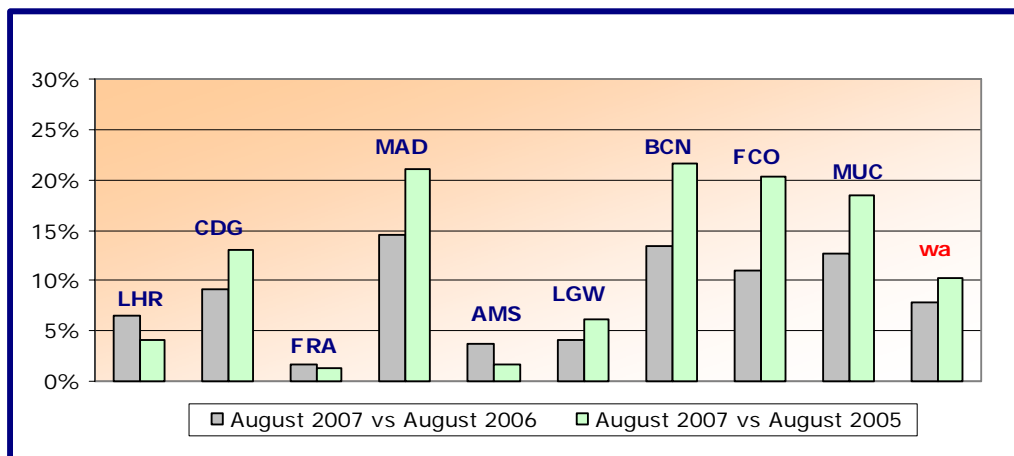
Airports		August 2007	2007v2006 variation %
1	Frankfurt (FRA)	171,902	4.6%
2	Amsterdam (AMS)	130,053	8.5%
3	London Heathrow (LHR)	109,516	7.8%
4	Cologne/Bonn (CGN)	59,468	9.6%
5	Brussels (BRU)	58,483	10.4%
6	Liege (LGG)	33,255	16.1%
7	Milan-Malpensa (MXP)	32,345	11.9%
8	Madrid (MAD)	23,305	0.2%
9	Nottingham East Midlands (EMA)	21,592	-1.4%
10	Zurich (ZRH)	21,191	5.8%

**Group 1**

**Airports welcoming more than 25 million passengers per year  
(percentage traffic variation August 2007 versus 2006 and 2005)**

Airport	2007v2006 variation %	2007v2005 variation %
LHR	+6.5%	+4.2%
CDG	+9.1%	+13.0%
FRA	+1.7%	+1.2%
MAD	+14.6%	+21.1%
AMS	+3.8%	+1.6%
LGW	+4.0%	+6.2%
BCN	+13.4%	+21.6%
FCO	+10.9%	+20.4%
MUC	+12.7%	+18.4%
<b>wa*</b>	<b>+7.9%</b>	<b>+10.3%</b>

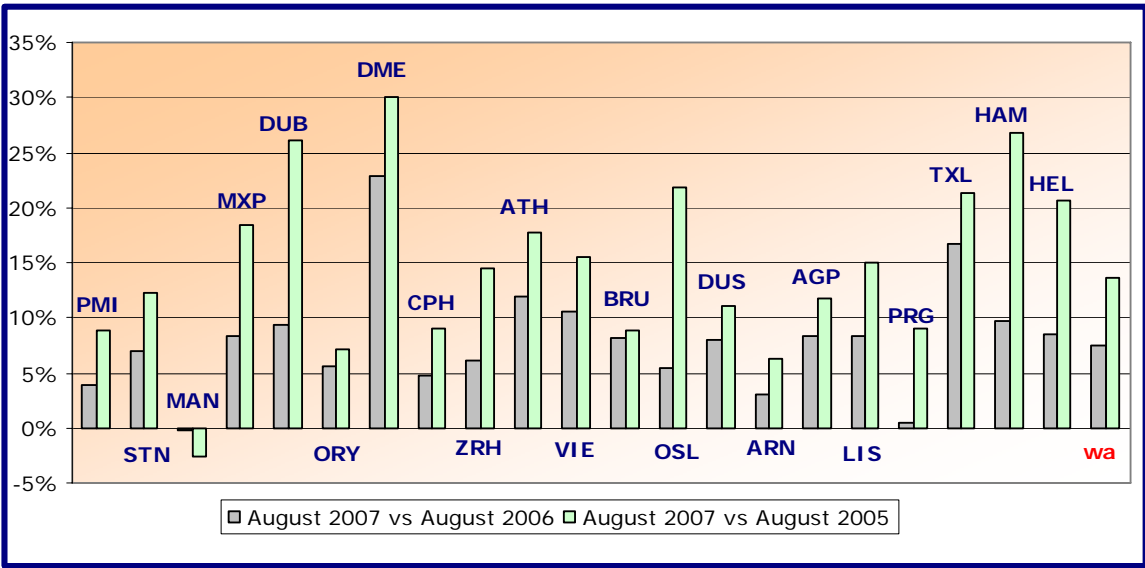
\*weighted average =  $\text{SUM}(\% \text{change} * \text{pax}) / \text{SUM}(\text{pax})$



**Group 2**  
**Airports welcoming between 10 and 25 million passengers**  
**per year (percentage traffic variation August 2007 versus 2006 and 2005)**

Airport	2007v2006 variation %	2007v2005 variation %
PMI	+3.9%	+8.9%
STN	+7.0%	+12.3%
MAN	-0.2%	-2.6%
MXP	+8.3%	+18.5%
DUB	+9.4%	+26.1%
ORY	+5.6%	+7.1%
DME	+22.9%	+30.0%
CPH	+4.7%	+8.9%
ZRH	+6.1%	+14.4%
ATH	+11.9%	+17.8%
VIE	+10.5%	+15.5%
BRU	+8.2%	+8.9%
OSL	+5.4%	+21.8%
DUS	+8.1%	+11.1%
ARN	+3.0%	+6.4%
AGP	+8.4%	+11.8%
LIS	+8.3%	+15.0%
PRG	+0.5%	+9.1%
TXL	+16.7%	+21.4%
HAM	+9.7%	+26.8%
HEL	+8.6%	+20.6%
<b>wa*</b>	<b>+7.5%</b>	<b>+13.6%</b>

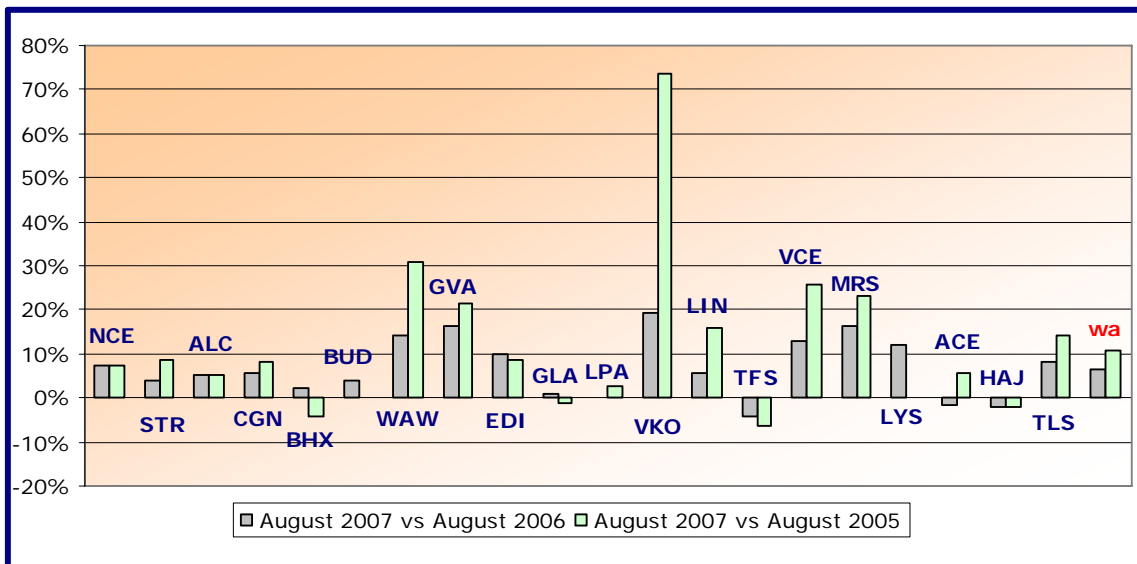
\*weighted average=SUM(%change\*pax)/SUM(pax)



**Group 3**  
**Airports welcoming between 5 and 10 million passengers**  
**per year (percentage traffic variation August 2007 versus 2006 and 2005)**

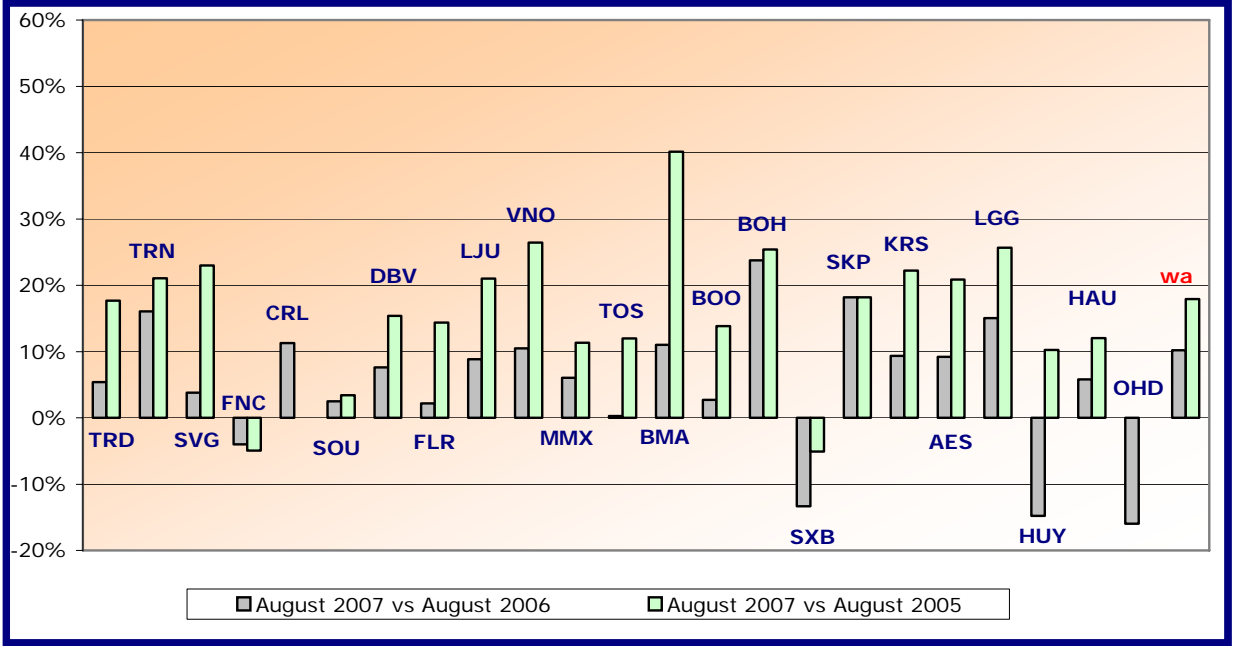
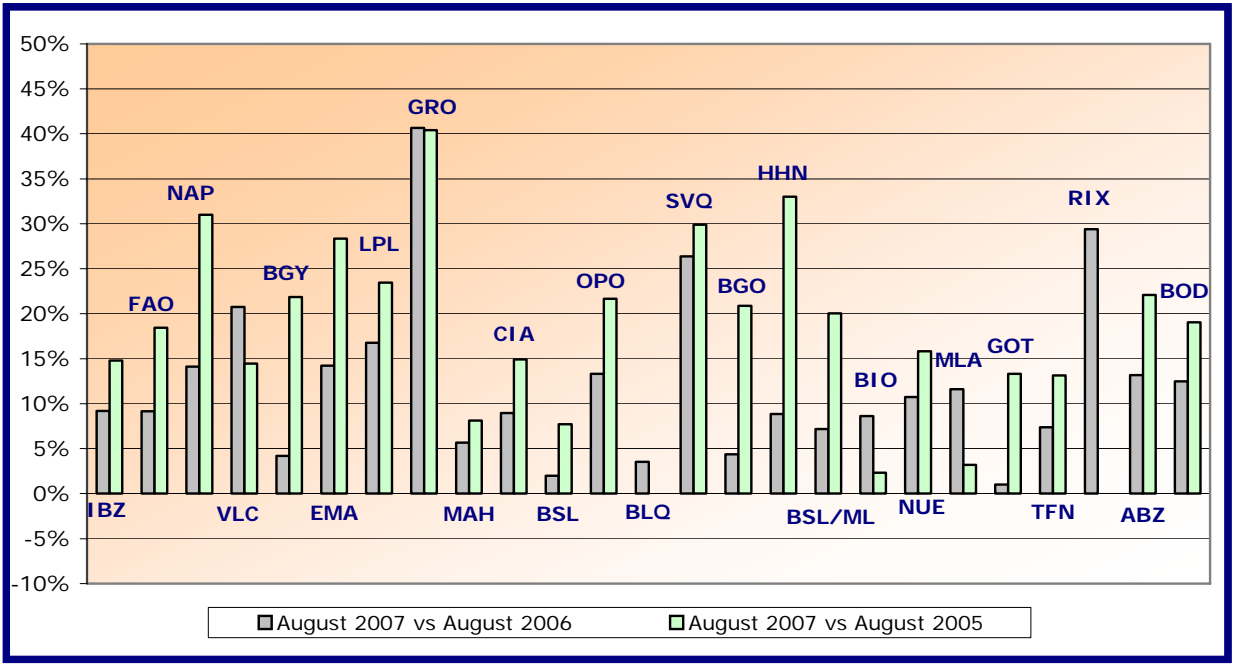
Airport	2007v2006 variation %	2007v2005 variation %
NCE	+7.5%	+7.1%
STR	+4.0%	+8.6%
ALC	+5.2%	+5.4%
CGN	+5.7%	+8.3%
BHX	+2.2%	-4.1%
BUD	+3.8%	N/A
WAW	+14.0%	+31.0%
GVA	+16.2%	+21.3%
EDI	+10.1%	+8.7%
GLA	+0.9%	-1.3%
LPA	+0.0%	+2.7%
VKO	+19.5%	+73.6%
LIN	+5.8%	+16.0%
TFS	-4.1%	-6.3%
VCE	+13.0%	+25.9%
MRS	+16.4%	+23.2%
LYS	+12.2%	N/A
ACE	-1.7%	+5.5%
HAJ	-2.2%	-1.9%
TLS	+8.4%	+14.4%
<b>wa*</b>	<b>+6.5%</b>	<b>+10.8%</b>

\*weighted average=SUM(%change\*pax)/SUM(pax)



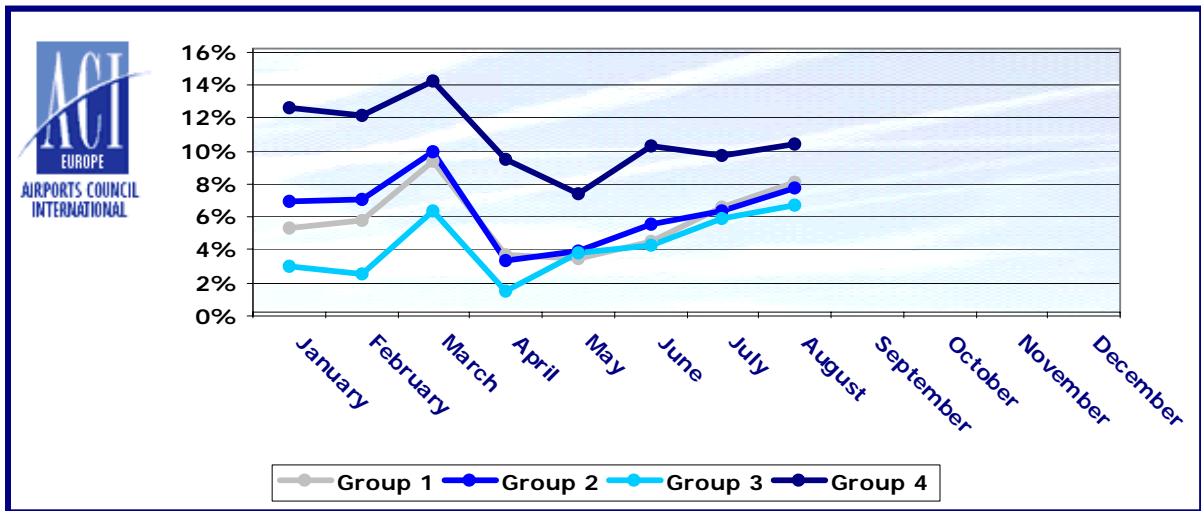
<b>Group 4</b>		
<b>Airports welcoming less than 5 million passengers</b>		
<b>per year (percentage traffic variation August 2007 versus 2006 and 2005)</b>		
Airport	2007v2006 variation %	2007v2005 variation %
IBZ	+9.2%	+14.8%
FAO	+9.2%	+18.4%
NAP	+14.1%	+31.0%
VLC	+20.7%	+14.5%
BGY	+4.2%	+21.9%
EMA	+14.2%	+28.4%
LPL	+16.8%	+23.5%
GRO	+40.7%	+40.4%
MAH	+5.7%	+8.1%
CIA	+8.9%	+14.9%
FUE	+2.0%	+7.7%
OPO	+13.3%	+21.6%
BLQ	+3.5%	N/A
SVQ	+26.4%	+29.9%
BGO	+4.4%	+20.9%
HHN	+8.9%	+33.0%
BSL/ML	+7.2%	+20.0%
BIO	+8.6%	+2.3%
NUE	+10.7%	+15.8%
MLA	+11.6%	+3.2%
GOT	+1.0%	+13.3%
TFN	+7.4%	+13.2%
RIX	+29.4%	N/A
ABZ	+13.2%	+22.1%
BOD	+12.5%	+19.0%
TRD	+5.4%	+17.7%
TRN	+16.1%	+21.1%
SVG	+3.8%	+23.0%
FNC	-4.0%	-4.9%
CRL	+11.3%	N/A
SOU	+2.5%	+3.4%
DBV	+7.6%	+15.4%
FLR	+2.2%	+14.4%
LJU	+8.8%	+21.0%
VNO	+10.5%	+26.4%
MMX	+6.0%	+11.3%
TOS	+0.3%	+12.0%
BMA	+11.0%	+40.1%
BOO	+2.7%	+13.8%
BOH	+23.8%	+25.4%
SXB	-13.3%	-5.1%
SKP	+18.2%	+18.2%
KRS	+9.3%	+22.2%
AES	+9.2%	+20.9%
LGG	+15.1%	+25.6%
HUY	-14.8%	+10.2%
HAU	+5.8%	+12.0%
OHD	-16.0%	N/A
<b>wa*</b>	<b>+10.2%</b>	<b>+17.9%</b>

\*weighted average =  $\text{SUM}(\% \text{change} * \text{pax}) / \text{SUM}(\text{pax})$



## Year-to-date airport passenger trends

The graphic illustrates and compares the trends of the different airport Groups 1, 2, 3 and 4 for 2007.



The graphic compares the amount of total commercial passengers 2007 with 2006, 2005, 2004, 2003, 2002 and 2001. The airports included, in this graphic, are: LHR, FRA, CDG, AMS, MAD, LGW, FCO, MUC, BCN, ORY, STN, MAN, MXP, ZRH, CPH, ARN, DUB, OSL, BRU, VIE, DUS, ATH, PMI, AGP, DME, HEL, TXL, LIS, HAM, PRG.

