



Airport Traffic Report

June 2007

European passenger traffic up 5.7% during first half of 2007

The 'ACI EUROPE Airport Traffic Report - June 2007' includes **102 airports** in total.

During the first half of 2007 passenger traffic increased by +5.7% compared with the corresponding period in 2006.

The overall **passenger** traffic at European airports increased by **+5.3%** in **June 2007** compared with June 2006. The overall **freight** traffic among European airports increased **+4.7%** in June 2007 when compared with the corresponding month in 2006. The overall figure for **movements** at European airports increased **+4.4%** in June 2007 when compared with June 2006.

Passenger figures for June 2007 once again indicate that Group 4 airports (airports welcoming less than 5 million passengers per year) had the largest increase in traffic - with an average increase of **+9.7%** when compared with June 2006 - and an average increase of **+21.8%** when compared with June 2005.

Airports welcoming more than 25 million passengers per year (Group 1), airports welcoming between 10 and 25 million passengers (Group 2) and airports welcoming between 5 and 10 million passengers (Group 3) reported an average increase of **+4.3%**, **+5.1%** and **+4.1%** respectively when compared with June 2006. The same comparison of June 2007 with June 2005 demonstrates an average increase of **+10.1%**, **+13.2%** and **+10.7%** respectively.

Examples of airports that experienced the highest increase in passenger traffic per group, when comparing June 2007 with June 2006, include:

- **Group 1 airports** – Madrid (**+14.0%**), Rome-Fiumicino (**+10.4%**) and Munich (**9.5%**);
- **Group 2 airports** – Moscow- Domodedovo (**+21.1%**), Berlin (**+13.3%**) and Athens (**+9.9%**);
- **Group 3 airports** – Moscow-Vnukovo (**+25.1%**), Marseille (**+13.6%**) and Warsaw (**+11.8%**);
- **Group 4 airports** – Bucharest (**+70.3%**), Girona (**+31.8%**) and Riga (**+30.2%**).

Airports		Passengers				Commercial movements		Freight (metric tonnes)	
		June 2007	2007v 2006 variation %	January – June	2007v 2006 variation %	June 2007	2007v 2006 variation %	June 2007	2007v 2006 variation %
1	London Heathrow (LHR)	6,035,000	-1.6%	32,708,500	-1.1%	39,959	0.4%	111,857	4.3%
2	Paris Roissy (CDG)	5,320,500	4.2%	28,540,600	4.9%	46,399	1.5%	167,510	11.7%
3	Frankfurt (FRA)	4,830,800	0.2%	25,692,800	2.5%	40,993	-0.5%	174,053	4.4%
4	Madrid (MAD)	4,519,900	14.0%	24,502,100	13.8%	40,754	11.7%	26,790	1.0%
5	Amsterdam (AMS)	4,249,800	0.4%	22,383,300	3.9%	38,054	1.4%	135,483	9.1%
6	London Gatwick (LGW)	3,362,700	1.3%	16,088,100	2.3%	23,550	2.2%	14,063	-23.9%
7	Munich (MUC)	3,037,100	9.5%	16,035,700	10.5%	35,332	4.8%	21,292	16.1%
8	Rome-Fiumicino (FCO)	3,011,400	10.4%	15,256,400	7.1%	28,578	7.0%	11,599	8.0%
9	Barcelona (BCN)	3,008,000	9.0%	15,355,600	8.4%	30,821	9.3%	8,338	4.6%
10	Palma de Mallorca (PMI)	2,794,100	3.6%	9,759,100	2.7%	21,578	7.0%	2,113	1.8%
11	Paris Orly (ORY)	2,356,600	3.2%	12,957,100	3.4%	20,082	1.0%	7,360	0.3%
12	Manchester (MAN)	2,233,400	-3.4%	10,246,700	-2.1%	19,267	-2.7%	13,866	7.1%
13	Dublin (DUB)	2,210,400	8.3%	10,846,900	10.7%	17,373	6.4%	9,256	-14.8%
14	London Stansted (STN)	2,206,500	-1.9%	11,320,600	0.3%	17,102	0.1%	17,713	-15.1%
15	Milan-Malpensa (MXP)	2,115,200	6.5%	11,205,400	9.5%	22,761	3.9%	40,075	18.7%
16	Copenhagen (CPH)	2,043,900	2.0%	10,203,500	2.4%	22,845	0.4%	N/A	N/A
17	Oslo (OSL)	1,844,200	6.0%	9,094,700	7.9%	19,509	5.6%	5,786	9.3%
18	Moscow-Domodedovo (DME)	1,844,100	21.1%	7,895,700	19.0%	16,697	20.1%	9,827	-10.6%
19	Zurich (ZRH)	1,793,700	4.6%	9,673,500	8.1%	19,055	0.3%	21,677	-0.1%
20	Vienna (VIE)	1,717,300	9.0%	8,562,600	8.9%	21,925	5.2%	16,373	9.0%
21	Düsseldorf (DUS)	1,689,300	2.7%	8,174,600	6.5%	18,887	4.3%	4,984	1.4%
22	Stockholm-Arlanda (ARN)	1,676,900	1.3%	8,799,000	-0.1%	17,692	-3.2%	8,891	24.5%
23	Brussels (BRU)	1,636,600	5.9%	8,142,800	3.6%	21,151	2.2%	61,242	8.4%
24	Athens (ATH)	1,579,600	9.9%	7,422,400	10.1%	16,462	6.9%	9,502	-0.8%
25	Malaga (AGP)	1,341,900	4.0%	6,204,100	2.3%	11,552	4.2%	520	20.9%
26	Helsinki (HEL)	1,219,600	6.3%	6,376,100	5.8%	15,425	0.1%	10,448	-1.1%

Airports		Passengers				Commercial movements		Freight (metric tonnes)	
		June 2007	2007v 2006 variation %	January – June	2007v 2006 variation %	June 2007	2007v 2006 variation %	June 2007	2007v 2006 variation %
27	Prague (PRG)	1,182,600	3.1%	5,580,600	9.1%	14,158	3.5%	4,109	3.9%
28	Berlin (TXL)	1,161,100	13.3%	6,103,800	9.0%	12,383	7.7%	1,293	1.7%
29	Lisbon (LIS)	1,145,300	9.3%	6,095,300	8.3%	12,294	8.1%	7,575	-2.8%
30	Hamburg (HAM)	1,124,200	5.1%	5,930,000	3.6%	N/A	N/A	2,707	2.2%
31	Nice (NCE)	1,055,700	3.2%	4,845,700	3.4%	12,263	4.3%	674	-30.3%
32	Stuttgart (STR)	981,400	1.5%	4,779,500	-1.4 %	11,930	0.6%	1,531	1.3%
33	Cologne/Bonn (CGN)	980,000	1.1%	4,879,700	5.0%	12,729	-2.0%	62,262	5.7%
34	Milan Linate (LIN)	924,700	2.0%	4,871,900	1.0%	8,653	-1.6%	1,553	-10.0%
35	Birmingham (BHX)	911,400	2.2%	4,243,800	-0.5%	9,640	-3.7%	1,131	-20.6%
36	Alicante (ALC)	900,700	2.8%	4,084,300	0.3%	7,389	7.0%	375	-10.5%
37	Warsaw (WAW)	891,600	11.8%	4,196,700	13.6%	11,670	3.2%	4,197	4.5%
38	Glasgow (GLA)	890,300	-1.3%	4,057,400	1.6%	8,532	-4.0%	397	-13.5%
39	Geneva (GVA)	858,500	10.1%	5,522,400	7.6%	10,355	9.1%	2,682	12.4%
40	Edinburgh (EDI)	847,100	3.6%	4,247,400	3.7%	9,981	-3.7%	1,282	-70.3%
41	Budapest (BUD)	812,700	2.6%	3,846,900	2.5%	10,567	-2.1%	4,595	-14.4%
42	Gran Canaria (LPA)	706,700	0.2%	5,059,000	-0.4%	7,655	-4.5%	2,758	-4.4%
43	Ibiza (IBZ)	694,300	8.0%	1,639,100	6.0%	6,469	10.9%	455	-9.0%
44	Venice (VCE)	683,100	10.7%	3,254,600	11.0%	7,416	7.5%	1,935	-1.7%
45	Moscow- Vnukovo (VKO)	681,900	25.1%	2,733,200	28.3%	11,554	19.5%	1,755	17.2%
46	Lyon (LYS)	661,400	7.9%	3,562,700	6.2%	11,057	1.5%	3,333	-17.3%
47	Marseille (MRS)	654,400	13.6%	3,270,200	14.3%	8,648	8.4%	3,771	4.3%
48	Faro (FAO)	645,200	6.4%	2,384,900	8.9%	5,055	23.0%	65	-55.9%
49	Toulouse (TLS)	590,200	5.1%	3,070,900	2.5%	7,546	4.9%	2,054	-9.4%
50	Tenerife Sur (TFS)	567,900	-3.6%	4,187,600	-2.1%	4,246	0.9%	690	-2.2%
51	Bucharest (OTP)	550,200	70,3%	N/A	N/A	7,018	42,7%	1,245	-6,0%
52	Nottingham East Midlands (EMA)	537,700	8.3%	2,483,300	18.5%	5,744	4.0%	24,362	-1.4%
53	Naples (NAP)	534,200	3.7%	2,586,200	12.8%	5,374	14.6%	255	80.6%

Airports		Passengers				Commercial movements		Freight (metric tonnes)	
		June 2007	2007v 2006 variation %	January - June	2007v 2006 variation %	June 2007	2007v 2006 variation %	June 2007	2007v 2006 variation %
54	Valencia (VLC)	533,700	19.9%	2,757,400	20.4%	7,437	20.9%	1,205	8.0%
55	Hanover (HAJ)	522,000	-6.8%	2,553,200	-2.4%	6,354	-3.7%	388	-11.6%
56	Milan/Orio al Serio (BGY)	516,900	5.3%	2,715,100	13.0%	5,010	4.8%	11,435	-7.7%
57	Liverpool (LPL)	507,800	12.3%	2,654,900	13.4%	4,168	-2.1%	288	-40.0%
58	Rome- Ciampino (CIA)	471,000	10.5%	2,692,300	16.1%	3,521	1.7%	1,960	-7.5%
59	Girona (GRO)	466,000	31.8%	2,112,400	25.7%	3,417	49.1%	16	-86.0%
60	Bergen (BGO)	443,900	5.6%	2,235,200	7.2%	6,748	4.6%	261	8.2%
61	Goteborg (GOT)	426,900	4.0%	2,131,100	1.2%	5,563	-1.2%	5,597	11.7%
62	Lanzarote (ACE)	419,700	-4.0%	2,614,900	0.0%	3,752	3.0%	428	-18.7%
63	Bologna (BLO)	418,500	10.6%	N/A	N/A	5,596	6.6%	1,392	-43.1%
64	Basel-Mulhouse (BSL/ML)	413,300	6.6%	2,057,300	11.7%	5,123	0.2%	4,164	76.9%
65	Menorca (MAH)	404,500	1.7%	1,015,000	5.8%	3,752	3.9%	352	-9.2%
66	Bilbao (BIO)	395,600	12.5%	1,975,400	8.8%	4,914	7.5%	271	-14.7%
67	Sevilla (SVQ)	370,800	15.3%	2,117,800	13.1%	4,258	14.1%	610	-39.2%
68	Hahn (HHN)	369,900	5.6%	1,936,600	14.7%	3,507	6.3%	9,633	3.3%
69	Nuremberg (NUE)	363,900	3.1%	2,026,500	1.8%	5,446	0.8%	1,089	10.7%
70	Fuerteventura (FUE)	359,400	4.7%	2,140,900	4.9%	3,228	-0.6%	255	2.1%
71	Bordeaux (BOD)	350,700	9.7%	1,673,000	6.5%	4,732	4.6%	641	-15.2%
72	Tenerife Norte (TFN)	336,700	-3.6%	2,005,600	1.7%	4,541	-4.0%	1,838	-6.5%
73	Porto (OPO)	330,500	14.5%	1,763,300	17.2%	4,406	9.8%	3,117	3.4%
74	Trondheim (TRD)	322,000	7.9%	1,661,500	8.8%	4,210	2.7%	216	21.4%
75	Stavanger (SVG)	316,000	7.4%	1,618,500	8.2%	4,758	8.9%	283	-18.6%
76	Aberdeen (ABZ)	308,200	7.5%	1,644,000	9.7%	8,970	4.8%	338	-8.4%
77	Riga (RIX)	302,400	30.2%	1,412,800	24.8%	4,208	20.0%	384	-65.5%
78	Turin (TRN)	300,300	7.7%	1,760,300	3.6%	4,312	12.8%	106	-26.9%
79	Malta (MLA)	286,600	10.5%	1,231,900	5.6%	3,010	13.2%	930	40.1%

Airports		Passengers				Commercial movements		Freight (metric tonnes)	
		June 2007	2007v 2006 variation %	January - June	2007v 2006 variation %	June 2007	2007v 2006 variation %	June 2007	2007v 2006 variation %
80	Madeira (FNC)	191,700	3.3%	1,165,300	1.0%	1,769	-11.6%	600	7.1%
81	Charleroi (CRL)	187,800	-3.9%	1,135,700	15.0%	1,253	-0.3%	1	3.1%
82	Southampton (SOU)	184,400	-1.2%	914,900	3.2%	4,162	-2.4%	24	71.4%
83	Florence (FLR)	177,600	-1.7%	N/A	N/A	2,384	-1.0%	6	-69.0%
84	Vilnius (VNO)	174,600	12.0%	N/A	N/A	2,725	5.1%	368	1.1%
85	Malmö (MMX)	173,400	0.1%	941,000	-2.9%	2,369	1.3%	3,426	-0.9%
86	Tromsø (TOS)	156,900	2.5%	790,000	4.0%	2,784	1.2%	203	2.7%
87	Ljubljana (LJU)	153,000	17.8%	636,200	12.5%	331	6.4%	1,095	67.4%
88	Stockholm- Bromma (BMA)	153,000	7.0%	921,100	12.8%	2,757	5.1%	29	383.3%
89	Dubrovnik (DBV)	152,200	-2.9%	418,100	-1.3%	1,432	-7.0%	70	0.8%
90	Bodo (BOO)	144,400	4.7%	734,200	6.5%	3,317	1.9%	153	15.7%
91	Kristiansand (KRS)	85,200	10.8%	426,200	9.0%	1,918	18.2%	49	-3.0%
92	Aalesund (AES)	72,900	6.3%	370,200	4.5%	959	9.2%	80	-2.8%
93	Skopje (SKP)	57,800	20.5%	N/A	N/A	933	12.0%	151	8.4%
94	Haugesund (HAU)	45,100	1.5%	251,200	11.7%	701	4.6%	32	28.5%
95	Liege (LGG)	34,800	0.5%	116,500	1.2%	2,344	7.0%	38,653	15.7%
96	Ohrd (OHD)	4,800	22.5%	18,400	-3.4%	85	6.3%	1	297.4%
97	Strasbourg (SXB)	N/A	N/A	N/A	N/A	N/A	N/A	N/A	N/A
98	Olbia (OLB)	N/A	N/A	N/A	N/A	N/A	N/A	N/A	N/A
99	Glasgow Prestwick (PIK)	N/A	N/A	N/A	N/A	N/A	N/A	N/A	N/A
100	Katowice (KTW)	N/A	N/A	N/A	N/A	N/A	N/A	N/A	N/A
101	Bournemouth (BOH)	N/A	N/A	N/A	N/A	N/A	N/A	N/A	N/A
102	Humberside (HUY)	N/A	N/A	N/A	N/A	N/A	N/A	N/A	N/A

----- Preliminary traffic figures -----

- *Terminal passengers
- **Freight & Mail
- *** N/A due to runway closure

Total commercial passengers

International passengers (enplaned + deplaned) + **domestic passengers** (enplaned + deplaned) + **direct transit passengers** (passengers who arrive at and depart from the airport on a flight bearing the same number. They are counted only ONCE).

Commercial movements

Landing or take off of an aircraft operating a scheduled or non scheduled commercial service.

Freight

Freight loaded and unloaded (arriving or departing) at the airport. Freight comprises goods, newspapers, diplomatic bags, parcel post and express parcel.

**The ten largest airports on freight – reporting to
ACI EUROPE**
(metric tonnes)

Airports		June 2007	2007v2006 variation %
1	Frankfurt (FRA)	174,053	4.4%
2	Paris Roissy (CDG)	167,510	11.7%
3	Amsterdam (AMS)	135,483	9.1%
4	London Heathrow (LHR)	111,857	4.3%
5	Cologne/Bonn (CGN)	62,262	5.7%
6	Brussels (BRU)	61,242	8.4%
7	Milan-Malpensa (MXP)	40,075	18.7%
8	Liege (LGG)	38,653	15.7%
9	Madrid (MAD)	26,790	1.0%
10	Nottingham East Midlands (EMA)	24,362	-1.4%

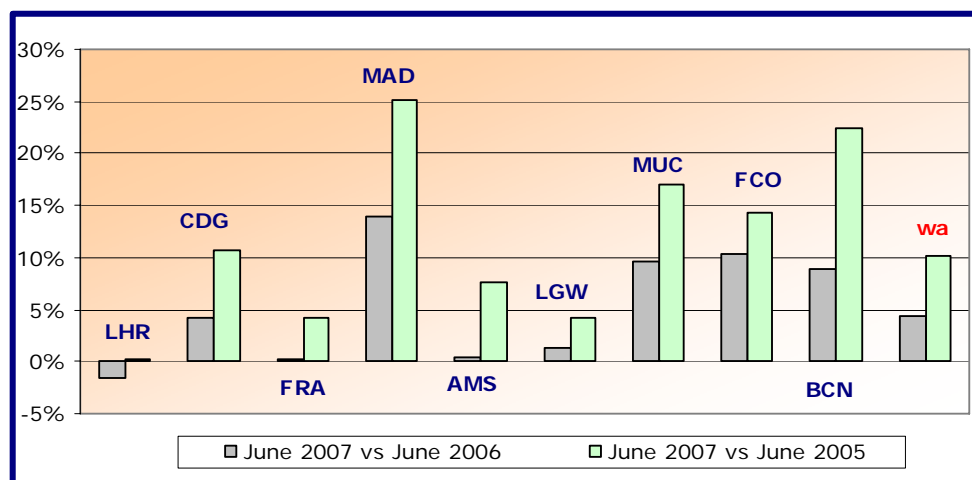
* Table only includes airports that send statistics regarding freight to ACI EUROPE

Group 1

**Airports welcoming more than 25 million passengers per year
(percentage traffic variation June 2007 versus 2006 and 2005)**

Airport	2007v2006 variation %	2007v2005 variation %
LHR	-1.6%	+0.2%
CDG	+4.2%	+10.6%
FRA	+0.2%	+4.1%
MAD	+14.0%	+25.2%
AMS	+0.4%	+7.6%
LGW	+1.3%	+4.2%
MUC	+9.5%	+17.1%
FCO	+10.4%	+14.3%
BCN	+9.0%	+22.5%
wa*	+4.3%	+10.1%

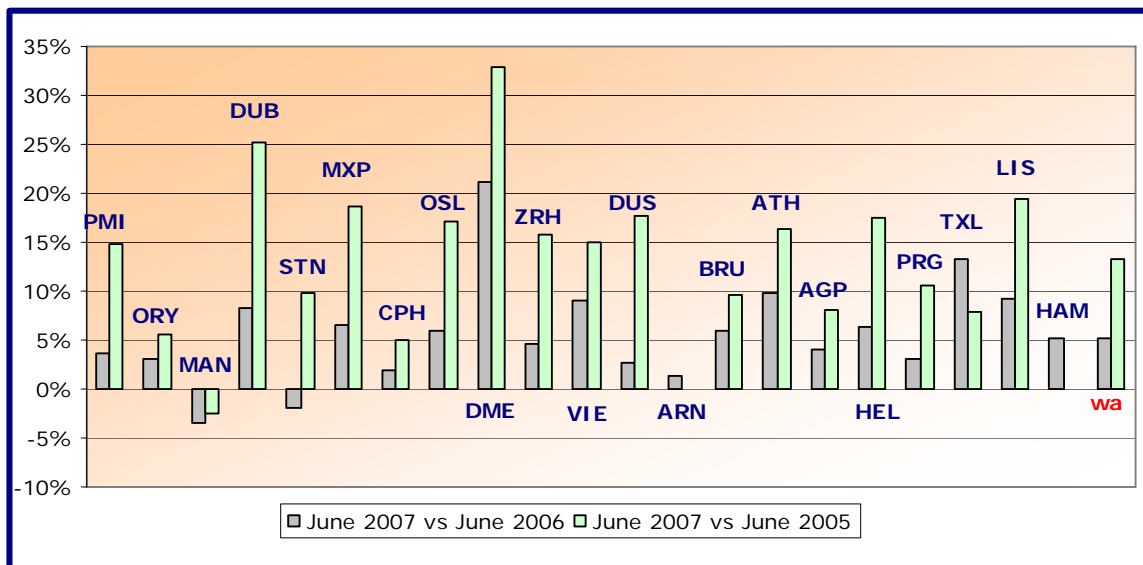
* weighted average = $\text{SUM}(\% \text{change} * \text{pax}) / \text{SUM}(\text{pax})$



Group 2
Airports welcoming between 10 and 25 million passengers
per year (percentage traffic variation June 2007 versus 2006 and 2005)

Airport	2007v2006 variation %	2007v2005 variation %
PMI	+3.6%	+14.8%
ORY	+3.2%	+5.7%
MAN	-3.4%	-2.4%
DUB	+8.3%	+25.3%
STN	-1.9%	+9.7%
MXP	+6.5%	+18.7%
CPH	+2.0%	+5.1%
OSL	+6.0%	+17.1%
DME	+21.1%	+32.9%
ZRH	+4.6%	+15.7%
VIE	+9.0%	+14.9%
DUS	+2.7%	+17.7%
ARN	+1.3%	N/A
BRU	+5.9%	+9.6%
ATH	+9.9%	+16.4%
AGP	+4.0%	+8.0%
HEL	+6.3%	+17.5%
PRG	+3.1%	+10.6%
TXL	+13.3%	+7.8%
LIS	+9.3%	+19.4%
HAM	+5.1%	N/A
wa*	+5.1%	+13.2%

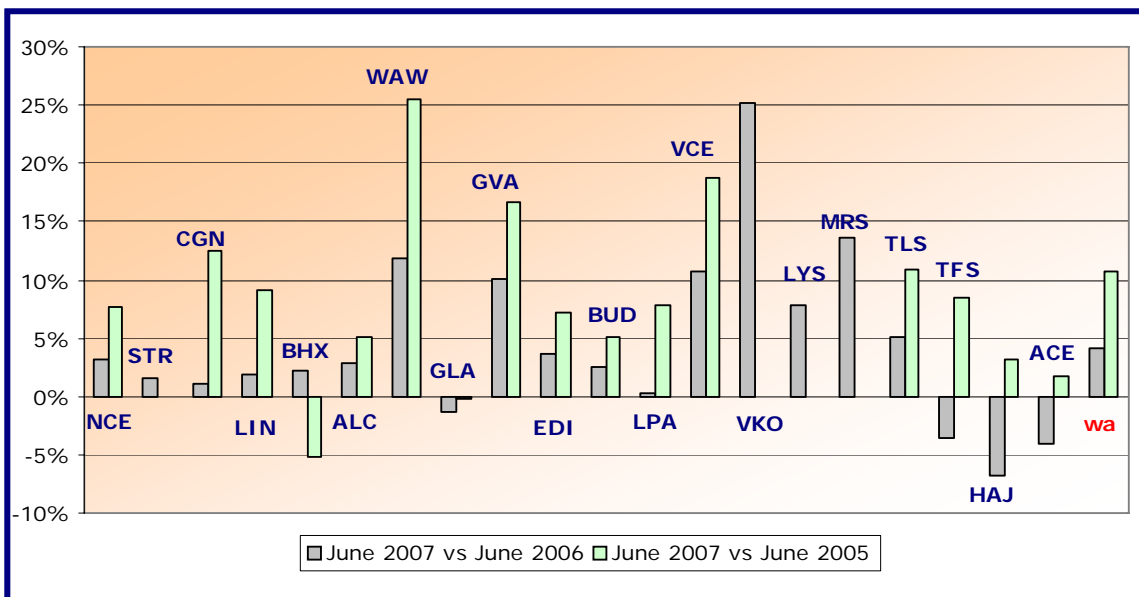
*weighted average=SUM(%change*pax)/SUM(pax)



Group 3
Airports welcoming between 5 and 10 million passengers
per year (percentage traffic variation June 2007 versus 2006 and 2005)

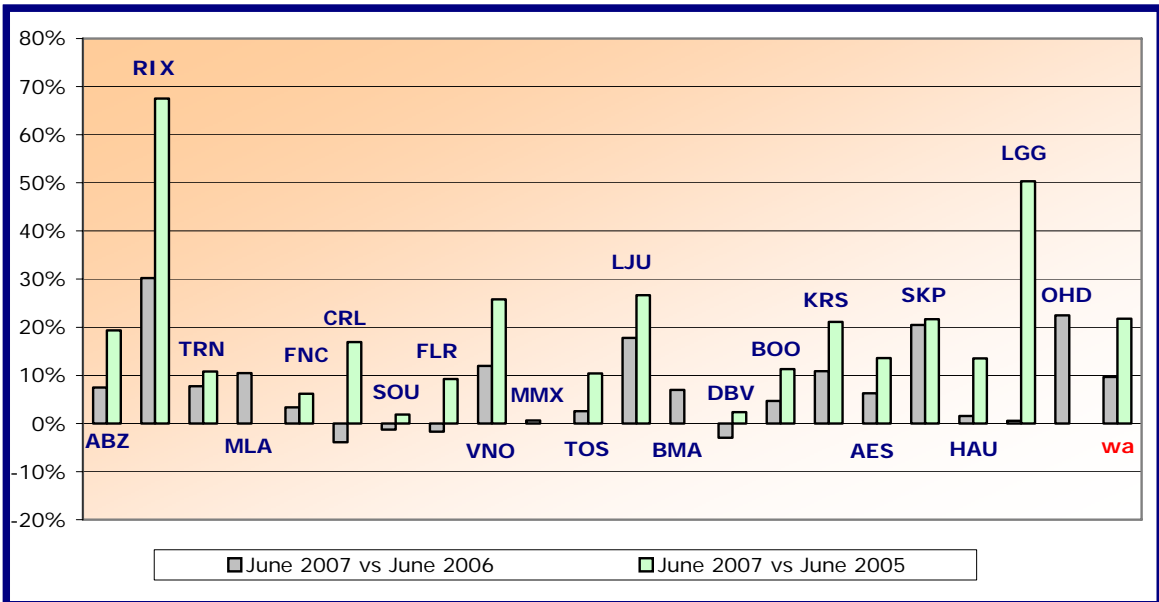
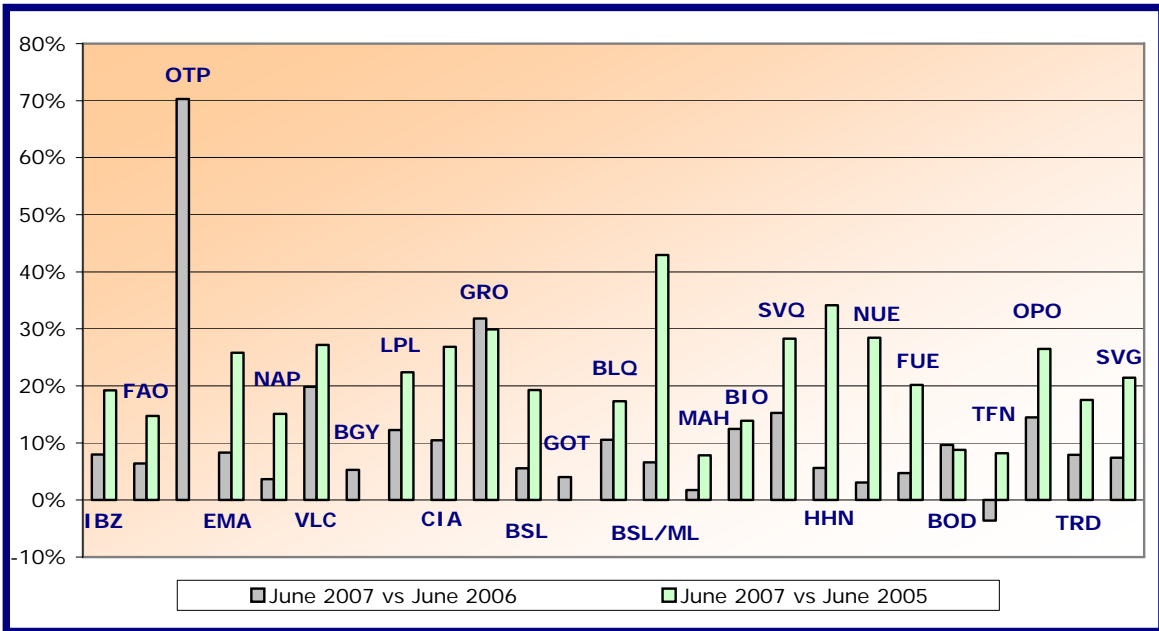
Airport	2007v2006 variation %	2007v2005 variation %
NCE	+3.2%	+7.6%
STR	+1.5%	N/A
CGN	+1.1%	+12.5%
LIN	+2.0%	+9.1%
BHX	+2.2%	-5.1%
ALC	+2.8%	+5.1%
WAW	+11.8%	+25.5%
GLA	-1.3%	-0.2%
GVA	+10.1%	+16.7%
EDI	+3.6%	+7.1%
BUD	+2.6%	+5.1%
LPA	+0.2%	+7.8%
VCE	+10.7%	+18.8%
VKO	+25.1%	+102.7%
LYS	+7.9%	N/A
MRS	+13.6%	N/A
TLS	+5.1%	+10.8%
TFS	-3.6%	+8.5%
HAJ	-6.8%	+3.2%
ACE	-4.0%	+1.7%
wa*	+4.1%	+10.7%

*weighted average=SUM(%change*pax)/SUM(pax)



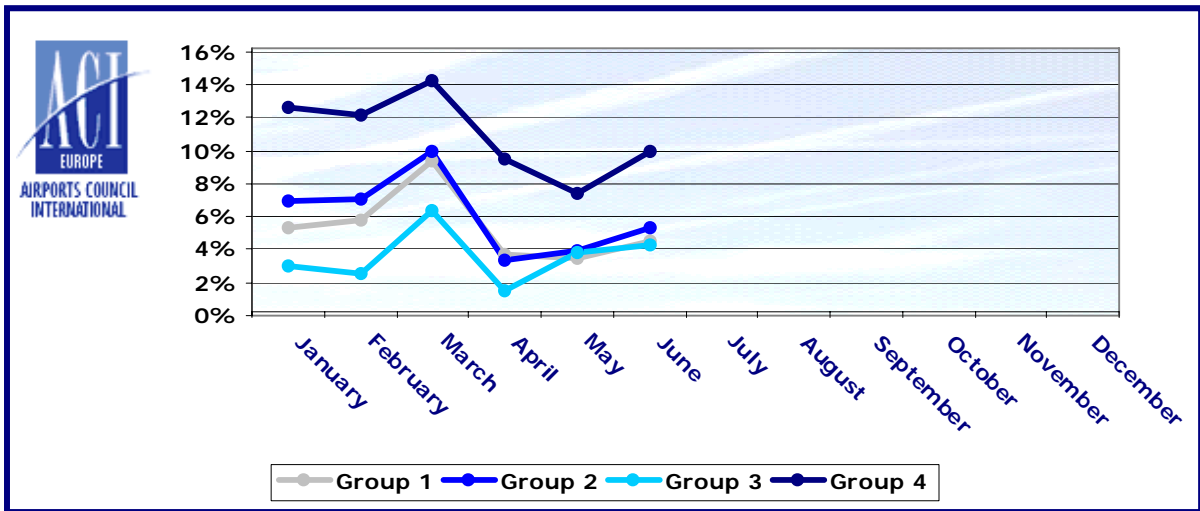
Group 4		
Airports welcoming less than 5 million passengers		
per year (percentage traffic variation June 2007 versus 2006 and 2005)		
Airport	2007v2006 variation %	2007v2005 variation %
IBZ	+8.0%	+19.2%
FAO	+6.4%	+14.7%
OTP	+70.3%	+92.8%
EMA	+8.3%	+25.8%
NAP	+3.7%	+15.1%
VLC	+19.9%	+27.2%
BGY	+5.3%	N/A
LPL	+12.3%	+22.4%
CIA	+10.5%	+26.9%
GRO	+31.8%	+29.9%
BGO	+5.6%	+19.3%
GOT	+4.0%	N/A
BLQ	+10.6%	+17.3%
BSL/ML	+6.6%	+42.9%
MAH	+1.7%	+7.8%
BIO	+12.5%	+13.9%
SVQ	+15.3%	+28.3%
HHN	+5.6%	+34.1%
NUE	+3.1%	+28.4%
FUE	+4.7%	+20.2%
BOD	+9.7%	+8.8%
TFN	-3.6%	+8.2%
OPO	+14.5%	+26.5%
TRD	+7.9%	+17.5%
SVG	+7.4%	+21.4%
ABZ	+7.5%	+19.3%
RIX	+30.2%	+67.5%
TRN	+7.7%	+10.8%
MLA	+10.5%	N/A
FNC	+3.3%	+6.2%
CRL	-3.9%	+16.9%
SOU	-1.2%	+1.9%
FLR	-1.7%	+9.2%
VNO	+12.0%	+25.8%
MMX	+0.1%	N/A
TOS	+2.5%	+10.4%
LJU	+17.8%	+26.7%
BMA	+7.0%	N/A
DBV	-2.9%	+2.3%
BOO	+4.7%	+11.3%
KRS	+10.8%	+21.1%
AES	+6.3%	+13.6%
SKP	+20.5%	+21.7%
HAU	+1.5%	+13.5%
LGG	+0.5%	+50.3%
OHD	+22.5%	N/A
wa*	+9.7%	+21.8%

*weighted average=SUM(%change*pax)/SUM(pax)



Year-to-date airport passenger trends

The graphic illustrates and compares the trends of the different airport Groups 1, 2, 3 and 4 for 2007.



The graphic compares the amount of total commercial passengers 2007 with 2006, 2005, 2004, 2003, 2002 and 2001. The airports included, in this graphic, are: LHR, FRA, CDG, AMS, MAD, LGW, FCO, MUC, BCN, ORY, STN, MAN, MXP, ZRH, CPH, ARN, DUB, OSL, BRU, VIE, DUS, ATH, PMI, AGP, DME, HEL, TXL, LIS, HAM, PRG.

