



# Airport Traffic Report

## March 2009

## European passenger traffic down -12.4% during Q1 2009

The 'ACI EUROPE Airport Traffic Report - March 2009' includes **108 airports** in total.




The overall **passenger** traffic at European airports decreased by **-12.6%** in **March 2009** compared with March 2008. The overall **freight** traffic among European airports decreased **-21.4%** in March 2009 when compared with the corresponding month in 2008. The overall figure for **movements** at European airports decreased **-6.1%** in March 2009 when compared with March 2008.




The accumulated figure for **passenger** traffic **January to March 2009** decreased by **-12.4%** compared with the corresponding period 2008. The accumulated figure for **freight** traffic during **January to March** decreased by **-23.1%** and **movements** decreased by **-9.8%** during the corresponding period when compared with 2008.




Airports welcoming more than 25 million passengers per year (Group 1), airports welcoming between 10 and 25 million passengers (Group 2), airports welcoming between 5 and 10 million passengers (Group 3) and airports welcoming less than 5 million passengers per year (Group 4) reported an average decrease of **-11.0%**, **-14.2%**, **-13.4%** and **-11.2%** respectively when compared with March 2008. The same comparison of March 2009 with March 2007 demonstrates an average decrease of **-8.8%**, **-9.8%**, **-8.9%** and **-6.4%** respectively.




Examples of airports that experienced the highest increase in passenger traffic per group, when comparing March 2009 with March 2008, include:

- **Group 3 airports** – Marseille (+**2.4%**) and Berlin SXF (+**1.5%**)
- **Group 4 airports** – Stockholm BMA (+**19.6%**), Humberside (+**10.1%**), Bodo (+**9.6%**) and Haugesund (+**9.5%**).

Airport		Passengers		Commercial movements		Freight	
		 March 2009		 March 2009		 March 2009	
London	LHR	5208146	-7,4%	39968	1,7%	102963	-13,7%
Paris	CDG	4523646	-9,1%	44692	-0,6%	160400	-15,7%
Frankfurt	FRA	4030081	-9,2%	37999	-2,8%	146094	-21,7%
Madrid	MAD	3881515	-14,7%	37173	-9,0%	23676	-12,9%
Amsterdam	AMS	3203068	-14,5%	31502	-7,9%	105079	-28,5%
Rome	FCO	2633539	-1,9%	26532	-1,0%	10588	-0,8%
Munich	MUC	2581634	-7,5%	32994	-1,2%	17179	-23,7%
London	LGW	2320642	-17,7%	18860	-8,8%	6094	-55,2%
Barcelona	BCN	2097662	-20,0%	23519	-13,8%	7084	-19,4%
Paris	ORY	2004023	-11,2%	18811	-4,6%	7900	-19,4%
Dublin	DUB	1688216	-13,9%	14797	-11,8%	7571	-10,8%
Zurich	ZRH	1651069	-8,8%	18201	-3,0%	21322	-17,1%
London	STN	1534252	-15,9%	12749	-13,0%	15296	-6,4%
Copenhagen	CPH	1510330	-15,7%	19713	-3,9%	N/A	N/A
Oslo	OSL	1475376	-5,1%	18700	5,2%	4715	-12,1%
Milan	MXP	1382990	-29,6%	15079	-28,6%	27899	-39,9%
Stockholm	ARN	1374095	-11,4%	17648	-0,1%	5945	-35,7%
Vienna	VIE	1368380	-15,6%	19821	-9,3%	14801	-12,7%
Manchester	MAN	1359056	-18,4%	13406	-12,9%	8851	-38,3%
Düsseldorf	DUS	1316562	-1,6%	16723	-0,6%	4852	9,6%
Brussels	BRU	1262159	-14,7%	18132	-8,1%	35749	-48,6%
Berlin	TXL	1157891	-0,8%	12954	4,5%	1320	-7,8%
Palma De Mallorca	PMI	1111525	-16,5%	10727	-11,3%	1346	-14,3%
Moscow	DME	1103559	-24,0%	12801	-12,9%	8011	-28,7%
Helsinki	HEL	1075934	-8,0%	15987	2,4%	9509	-22,7%
Athens	ATH	1052096	-11,6%	14349	5,5%	8246	-14,5%
Hamburg	HAM	999238	-5,3%	11464	-4,8%	5619	-23,2%
Moscow	SVO	967308	-16,0%	11938	-11,3%	7937	-20,1%
Lisbon	LIS	945410	-17,1%	10459	-8,8%	6732	-10,2%
Gran Canaria	LPA	865450	-19,0%	8669	-16,7%	2198	-25,6%
Prague	PRG	804105	-18,2%	12594	-7,2%	2910	-27,4%
Malaga	AGP	792777	-20,8%	7014	-20,5%	317	-17,1%
Milan	LIN	707760	-13,5%	8457	1,8%	1253	-8,1%
Tenerife	TFS	699972	-21,7%	4526	-26,2%	496	-38,0%
Edinburgh	EDI	694764	-3,9%	8948	-2,7%	2219	110,1%
Nice	NCE	685719	-12,0%	8771	-12,7%	854	28,3%
Cologne	CGN	680007	-8,0%	9403	-2,5%	45962	-4,0%
Birmingham	BHX	674301	-7,7%	7874	-3,3%	851	-27,7%
Stuttgart	STR	639455	-14,9%	9207	-7,9%	1317	-26,7%
Alicante	ALC	617848	-20,8%	5012	-21,0%	262	-23,6%
Warsaw	WAW	569386	-20,3%	9683	-13,3%	3023	-9,3%
Budapest	BUD	547832	-15,1%	8157	-8,4%	4494	-14,1%
Marseille	MRS	529390	2,4%	7726	-0,9%	3910	10,9%
Milan	BGY	528102	-2,5%	4935	-2,9%	8828	-21,1%
Glasgow	GLA	524582	-13,9%	6094	-10,6%	193	-39,7%
Toulouse	TLS	518321	-3,2%	7057	5,7%	4915	1,4%
Berlin	SXF	511428	1,5%	4688	9,8%	345	31,4%
Moscow	VKO	489673	-13,2%	6798	-10,0%	2055	0,3%
Venice	VCE	472826	-13,5%	5416	-10,5%	2436	31,4%
Lanzarote	ACE	405671	-23,1%	3482	-25,8%	336	-29,4%
Rome	CIA	393856	-3,8%	2909	-3,4%	1435	-9,7%
Bergen	BGO	385863	5,8%	6216	12,4%	208	2,9%
Hanover	HAJ	383323	-13,5%	4990	-9,2%	203	-42,7%
Valencia	VLC	370313	-31,5%	5462	-20,4%	883	-26,6%
Nuremberg	NUE	368162	1,0%	4789	-0,2%	707	-24,0%
Naples	NAP	365072	-14,0%	4271	-8,8%	102	-64,7%
Girona	GRO	352740	-20,7%	2795	-18,5%	0	-98,9%
East Midlands	EMA	334149	-27,5%	5117	-10,7%	22379	4,2%
Sevilla	SVQ	325354	-22,3%	3602	-23,0%	476	-39,6%
Tenerife	TFN	316769	-11,6%	4878	-8,9%	1430	-18,2%
Porto	OPO	315454	-16,6%	4239	-6,6%	2194	-15,6%
Fuerteventura	FUE	313268	-25,7%	2955	-22,4%	178	-29,0%
Gothenburg	GOT	308442	-14,3%	4983	-3,6%	3847	-15,3%
Turin	TRN	301764	-10,7%	4340	4,3%	112	-50,8%
Trondheim	TRD	300765	9,2%	4293	14,7%	162	-1,4%
Stavanger	SVG	290874	4,9%	4679	16,4%	237	15,8%
Bilbao	BIO	286946	-25,6%	3950	-15,2%	248	4,0%
Basel	BSL	279543	-12,1%	4231	-5,8%	2603	-23,1%
Riga	RIX	274681	3,3%	4364	9,2%	432	9,9%
Hahn	HHN	254718	-11,9%	2850	1,0%	6212	-43,8%
Bordeaux	BOD	253384	-9,0%	3945	-6,1%	539	-12,0%
Faro	FAO	250029	-23,0%	1930	-20,6%	125	166,0%
Sofia	SOF	249018	-5,1%	3355	-0,7%	1193	-8,4%
Aberdeen	ABZ	240977	-8,1%	8261	1,2%	542	60,8%
Funchal	FNC	198679	-15,6%	1861	-6,6%	508	-5,1%
Bari	BRI	198048	0,7%	2216	-9,9%	54	-61,3%
Krakow	KRK	188126	-20,5%	2332	-14,7%	200	-9,8%
Malta	MLA	184283	-20,7%	1814	-12,2%	1304	-7,4%

Airport		Passengers		Commercial movements		Freight	
		 March 2009		 March 2009		 March 2009	
Stockholm	BMA	182907	19,6%	3798	33,4%	15	-46,4%
Glasgow	PIK	150175	-21,9%	1467	-15,8%	1364	-58,2%
Tromsøe	TOS	137527	1,4%	2629	8,6%	175	2,4%
Southampton	SOU	135312	-12,3%	3305	-5,5%	16	-40,7%
Bodo	BOO	134923	9,6%	3145	11,2%	99	-20,9%
Malmö	MMX	130818	-10,2%	2031	-0,6%	2142	-15,5%
Ibiza	IBZ	129209	-16,7%	1913	-15,3%	197	-21,5%
Florence	FLR	123293	-18,7%	1986	-9,7%	17	124,0%
Tallinn	TLL	113777	-25,4%	2289	-20,5%	1982	-41,2%
Luxembourg	LUX	105067	-17,9%	3823	-9,6%	56199	-22,7%
Strasbourg	SXB	92089	-13,7%	2416	-15,7%	29	-17,1%
Vilnius	VNO	90595	-43,7%	1586	-45,1%	222	-33,1%
Ljubljana	LJU	85183	-23,5%	2505	-6,5%	572	-26,8%
Menorca	MAH	79280	-21,0%	1405	-15,7%	193	-15,3%
Bournemouth	BOH	77673	-15,5%	950	-5,4%	1	-68,9%
Kristiansand	KRS	72138	4,8%	1803	16,3%	37	-13,5%
Brindisi	BDS	71643	1,1%	737	-8,8%	4	-43,0%
Aalesund	AES	67155	9,1%	920	19,8%	71	-8,4%
Haugesund	HAU	41280	9,5%	545	20,6%	27	25,0%
Skopje	SKP	38699	-21,1%	729	-7,6%	290	69,0%
Toulon	TLN	35407	-15,7%	451	-29,4%	N/A	N/A
Dubrovnik	DBV	26642	-35,1%	336	-26,6%	36	-40,0%
Humbly Grove	HUY	25644	10,1%	1371	53,9%	93	-72,9%
Liege	LGG	12581	-12,7%	2088	-7,0%	38154	-24,5%

Airport		Passengers		Commercial movements		Freight	
		 January - March 2009		 January - March 2009		 January - March 2009	
London	LHR	14470609	-6,2%	112252	-2,7%	286588	-14,6%
Paris	CDG	12447664	-8,2%	124376	-5,0%	436001	-15,4%
Frankfurt	FRA	10917476	-10,9%	106173	-6,2%	387410	-23,7%
Madrid	MAD	10317524	-16,5%	103153	-13,3%	67629	-15,1%
Amsterdam	AMS	8842950	-12,5%	88900	-9,2%	290795	-27,6%
Munich	MUC	6964791	-9,6%	89188	-7,0%	46135	-25,8%
Rome	FCO	6691552	-5,3%	74238	-4,7%	25382	-12,3%
London	LGW	6299152	-14,5%	52561	-10,1%	17990	-54,1%
Paris	ORY	5560660	-9,6%	52471	-7,1%	21542	-16,0%
Barcelona	BCN	5485119	-21,0%	64649	-18,4%	19066	-21,9%
Zurich	ZRH	4572154	-6,3%	51816	-5,4%	58482	-15,3%
Dublin	DUB	4563490	-11,4%	41886	-12,1%	14019	-14,7%
London	STN	4118796	-14,6%	35328	-15,7%	41062	-16,4%
Copenhagen	CPH	4116581	-16,2%	55088	-10,8%	N/A	N/A
Oslo	OSL	3935573	-10,2%	51205	-4,4%	13068	-22,1%
Manchester	MAN	3734357	-15,5%	37417	-15,0%	22682	-41,1%
Milan	MXP	3714079	-31,2%	41666	-32,9%	69971	-42,9%
Vienna	VIE	3660105	-14,8%	56202	-10,5%	38724	-16,7%
Stockholm	ARN	3631548	-15,0%	46986	-10,1%	16610	-33,5%
Dusseldorf	DUS	3472825	-6,6%	45265	-9,4%	13148	1,3%
Brussels	BRU	33201668	-16,1%	49704	-15,2%	98196	-50,0%
Moscow	DME	3156491	-22,7%	36391	-15,3%	20728	-28,1%
Berlin	TXL	3022916	-6,4%	35098	-4,6%	3514	-18,8%
Helsinki	HEL	2959561	-7,8%	43631	-4,5%	22481	-33,8%
Athens	ATH	2869555	-7,9%	39619	1,8%	22694	-14,4%
Moscow	SVO	2776843	-12,3%	34679	-11,4%	19629	-24,3%
Palma De Mallorca	PMI	2655025	-13,4%	28154	-9,8%	3875	-15,1%
Lisbon	LIS	2619851	-10,4%	30471	-8,1%	17955	-13,2%
Hamburg	HAM	2575284	-9,4%	31431	-10,8%	15217	-24,0%
Gran Canaria	LPA	2513970	-13,1%	25599	-12,3%	6869	-24,2%
Prague	PRG	2070291	-17,6%	35158	-9,7%	7905	-28,0%
Tenerife	TFS	1997633	-18,8%	13253	-23,0%	1619	-31,1%
Malaga	AGP	1967034	-20,4%	19054	-22,0%	918	-19,9%
Birmingham	BHX	1823062	-6,1%	21913	-6,2%	2207	-32,3%
Cologne	CGN	1814991	-11,3%	26074	-8,0%	126857	-9,8%
Milan	LIN	1814724	-20,0%	23319	-5,1%	3377	-19,7%
Edinburgh	EDI	1811798	-7,4%	24655	-7,8%	6185	77,6%
Nice	NCE	1769206	-12,0%	23506	-12,5%	2383	35,5%
Stuttgart	STR	1697529	-15,7%	25402	-13,4%	3711	-28,0%
Warsaw	WAW	1593857	-19,9%	27544	-16,9%	8029	-16,2%
Alicante	ALC	1564721	-18,4%	13770	-18,8%	726	-28,5%
Budapest	BUD	1462293	-14,4%	22819	-11,8%	11270	-23,4%
Toulouse	TLS	1436784	-2,6%	19597	1,0%	13684	1,5%
Milan	BGY	1424710	0,6%	13939	-6,3%	23896	-27,7%
Marseille	MRS	1397878	-4,0%	21265	-7,1%	10929	4,7%
Glasgow	GLA	1387841	-15,2%	16739	-13,4%	453	-53,2%
Berlin	SXF	1370472	3,6%	13241	8,8%	960	16,8%
Moscow	VKO	1334153	-12,5%	19824	-11,6%	6686	5,4%
Venice	VCE	1245848	-12,9%	15210	-9,7%	6654	30,5%
Lanzarote	ACE	1130004	-19,9%	10048	-22,6%	951	-30,1%
Bergen	BGO	1044160	-0,9%	17124	0,2%	556	-19,1%
Rome	CIA	1043254	-6,0%	8159	-6,9%	4034	-17,1%
Nuremberg	NUE	1005002	-3,7%	13374	-8,6%	2041	-36,4%
Hanover	HAJ	952752	-14,5%	13448	-14,4%	886	-46,2%
Naples	NAP	948385	-15,8%	11950	-10,6%	213	-57,1%
Girona	GRO	943834	-18,1%	7974	-18,9%	7	-82,0%
Valencia	VLC	940521	-31,6%	15279	-22,7%	2299	-34,3%
East Midlands	EMA	918691	-23,5%	14732	-10,9%	62084	-6,7%
Fuerteventura	FUE	891899	-19,2%	8525	-16,6%	508	-28,6%
Porto	OPO	885180	-8,3%	12321	-5,4%	6035	-20,6%
Tenerife	TFN	881168	-9,5%	13566	-7,9%	4128	-17,7%
Sevilla	SVQ	840413	-21,2%	10269	-23,1%	1146	-39,6%
Gothenburg	GOT	836070	-17,4%	13279	-12,3%	9214	-25,7%
Turin	TRN	822169	-11,0%	12407	1,2%	255	-33,0%
Trondheim	TRD	793901	-0,1%	11718	2,3%	457	-18,0%
Stavanger	SVG	777037	-2,8%	12730	2,7%	650	-10,2%
Riga	RIX	755966	4,9%	12517	8,9%	1142	1,4%

Airport		Passengers		Commercial movements		Freight	
		 January - March 2009	January - March 2009	 January - March 2009	January - March 2009	 January - March 2009	January - March 2009
Sofia	SOF	744631	2,8%	9806	4,1%	3352	-3,9%
Bilbao	BIO	743552	-24,0%	10809	-18,0%	668	-9,9%
Basel	BSL	725981	-13,9%	11528	-11,2%	7340	-23,4%
Hahn	HHN	697794	-7,2%	8114	-2,0%	18344	-37,8%
Bordeaux	BOD	680516	-7,7%	10875	-9,8%	1658	-11,5%
Aberdeen	ABZ	657388	-10,9%	23112	-4,9%	1353	36,0%
Faro	FAO	578157	-17,8%	4900	-14,3%	159	39,6%
Krakow	KRK	519361	-19,5%	6501	-17,4%	601	13,6%
Bari	BRI	515110	-4,4%	6284	-12,9%	94	-76,6%
Funchal	FNC	511824	-11,8%	5146	-6,1%	1412	-6,6%
Stockholm	BMA	468389	4,0%	9480	10,9%	41	-51,2%
Malta	MLA	462535	-15,5%	4860	-10,9%	3818	-10,0%
Glasgow	PIK	419789	-16,8%	4276	-12,1%	3507	-53,2%
Tromsoe	TOS	364423	-3,4%	7365	-2,1%	487	-10,7%
Southampton	SOU	349075	-14,6%	8776	-10,9%	43	-51,1%
Malmö	MMX	348891	-13,4%	5206	-13,4%	6096	-14,2%
Bodo	BOO	342700	-0,3%	8700	-0,7%	301	-25,2%
Florence	FLR	336220	-14,9%	5631	-10,0%	36	74,0%
Ibiza	IBZ	315809	-13,0%	5372	-7,4%	537	-24,5%
Tallinn	TLL	305547	-24,5%	6481	-22,0%	5460	-37,0%
Luxembourg	LUX	285069	-14,6%	10931	-9,3%	151317	-25,7%
Vilnius	VNO	259890	-37,9%	4708	-44,1%	603	-39,0%
Strasbourg	SXB	241129	-20,3%	6850	-19,8%	75	-25,0%
Ljubljana	LJU	238083	-22,0%	7071	-8,8%	1488	-35,4%
Bournemouth	BOH	208156	-10,7%	2685	-6,1%	4	-50,3%
Menorca	MAH	198161	-16,6%	3915	-11,4%	523	-18,1%
Kristiansand	KRS	196051	-0,2%	5009	7,7%	99	-24,9%
Brindisi	BDS	189726	-0,3%	2258	-3,9%	20	23,1%
Aalesund	AES	178151	2,1%	2614	9,8%	204	-18,7%
Skopje	SKP	113247	-13,0%	2175	-3,6%	675	19,4%
Haugesund	HAU	109732	-6,0%	1446	-10,4%	75	-22,2%
Toulon	TLN	96192	-13,3%	1248	-24,5%	N/A	N/A
Humberstone	HUY	70367	0,3%	3648	46,8%	264	-74,7%
Dubrovnik	DBV	60252	-25,8%	808	-20,2%	94	-44,6%
Liege	LGG	37824	7,7%	5768	-13,5%	104752	-26,9%

----- Preliminary traffic figures -----

### Total commercial passengers

**International passengers** (enplaned + deplaned) + **domestic passengers** (enplaned + deplaned) + **direct transit passengers** (passengers who arrive at and depart from the airport on a flight bearing the same number. They are counted only ONCE).

### Commercial movements

Landing or take off of an aircraft operating a scheduled or non scheduled commercial service.

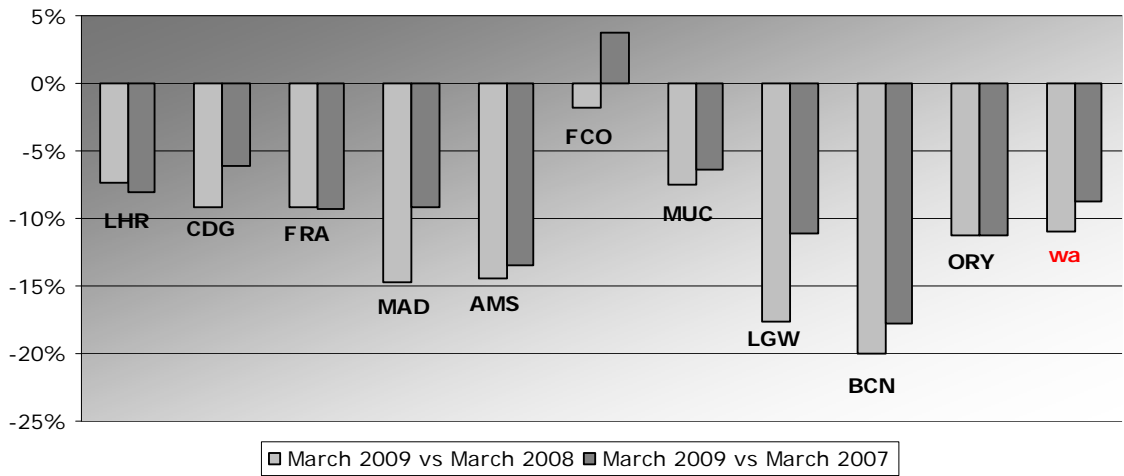
### Freight

Freight loaded and unloaded (arriving or departing) at the airport. Freight comprises goods, newspapers, diplomatic bags, parcel post and express parcel.

**Group 1**  
**Airports welcoming more than 25 million passengers per year**  
**(percentage traffic variation March 2009 versus 2008 and 2007)**

Airport	2009v2008 variation %	2009v2007 variation %
LHR	-7,4%	-8,0%
CDG	-9,1%	-6,1%
FRA	-9,2%	-9,3%
MAD	-14,7%	-9,2%
AMS	-14,5%	-13,4%
FCO	-1,9%	3,7%
MUC	-7,5%	-6,4%
LGW	-17,7%	-11,1%
BCN	-20,0%	-17,8%
ORY	-11,2%	-11,3%
<b>wa*</b>	<b>-11,0%</b>	<b>-8,8%</b>

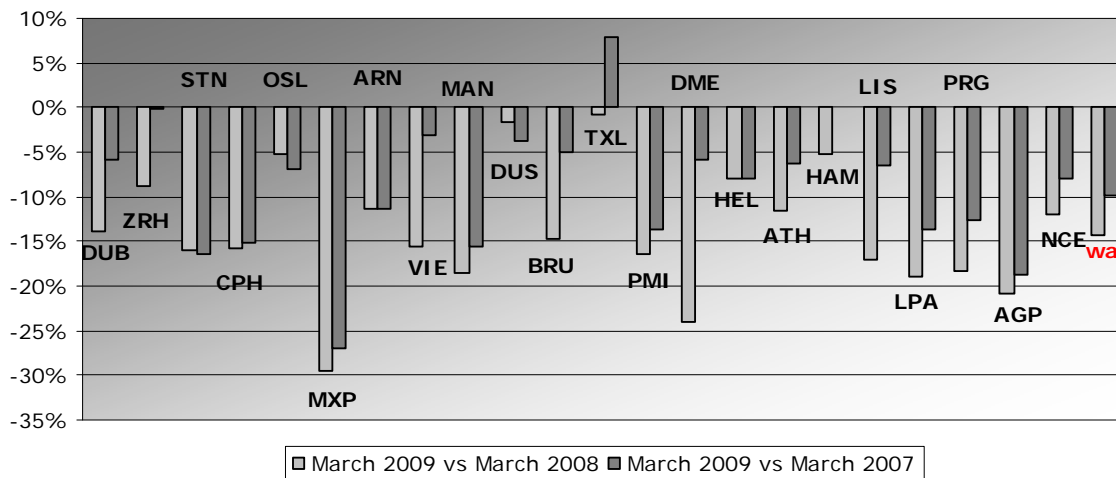
\*weighted average =  $\text{SUM}(\% \text{change} * \text{pax}) / \text{SUM}(\text{pax})$



**Group 2**  
**Airports welcoming between 10 and 25 million passengers**  
**per year (percentage traffic variation March 2009 versus 2008 and 2007)**

Airport	2009v2008 variation %	2009v2007 variation %
DUB	-13,9%	-5,9%
ZRH	-8,8%	-0,1%
STN	-15,9%	-16,4%
CPH	-15,7%	-15,1%
OSL	-5,1%	-6,9%
MXP	-29,6%	-27,0%
ARN	-11,4%	-11,3%
VIE	-15,6%	-3,1%
MAN	-18,4%	-15,6%
DUS	-1,6%	-3,7%
BRU	-14,7%	-5,1%
TXL	-0,8%	7,9%
PMI	-16,5%	-13,6%
DME	-24,0%	-5,9%
HEL	-8,0%	-8,1%
ATH	-11,6%	-6,2%
HAM	-5,3%	N/A
LIS	-17,1%	-6,6%
LPA	-19,0%	-13,6%
PRG	-18,2%	-12,5%
AGP	-20,8%	-18,7%
NCE	-12,0%	-7,9%
<b>wa*</b>	<b>-14,2%</b>	<b>-9,8%</b>

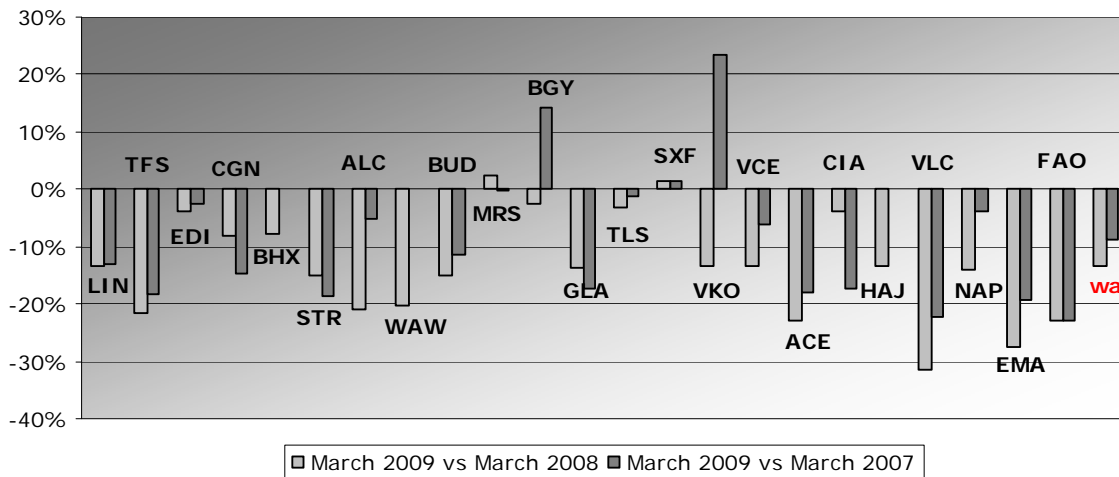
\*weighted average=SUM(%change\*pax)/SUM(pax)



**Group 3**  
**Airports welcoming between 5 and 10 million passengers**  
**per year (percentage traffic variation March 2009 versus 2008 and 2007)**

Airport	2009v2008 variation %	2009v2007 variation %
LIN	-13,5%	-13,0%
TFS	-21,7%	-18,2%
EDI	-3,9%	-2,6%
CGN	-8,0%	-14,7%
BHX	-7,7%	0,1%
STR	-14,9%	-18,8%
ALC	-20,8%	-5,0%
WAW	-20,3%	N/A
BUD	-15,1%	-11,4%
MRS	2,4%	-0,1%
BGY	-2,5%	14,4%
GLA	-13,9%	-17,2%
TLS	-3,2%	-1,1%
SXF	1,5%	1,3%
VKO	-13,2%	23,4%
VCE	-13,5%	-6,0%
ACE	-23,1%	-18,1%
CIA	-3,8%	-17,5%
HAJ	-13,5%	N/A
VLC	-31,5%	-22,1%
NAP	-14,0%	-3,7%
EMA	-27,5%	-19,4%
FAO	-23,0%	-23,0%
<b>wa*</b>	<b>-13,4%</b>	<b>-8,9%</b>

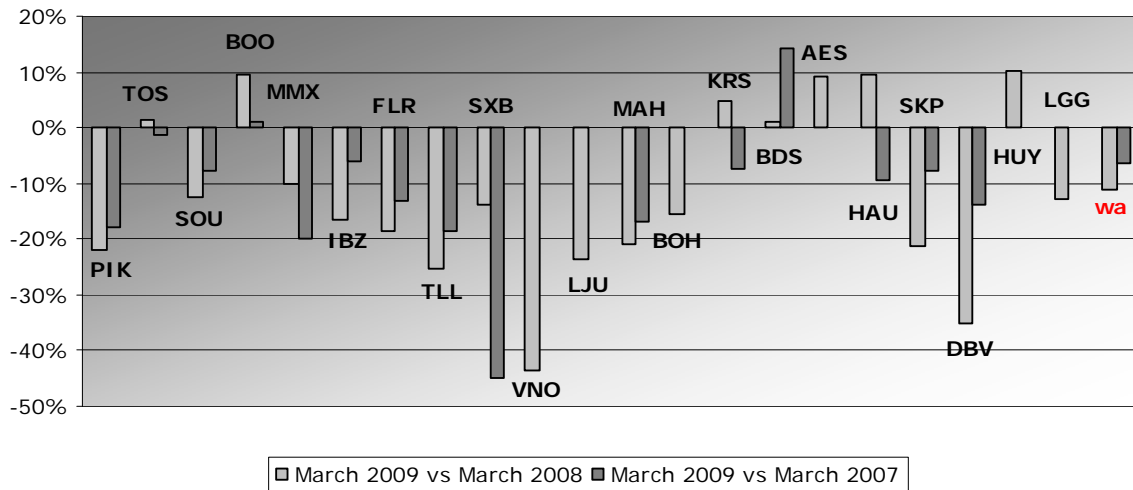
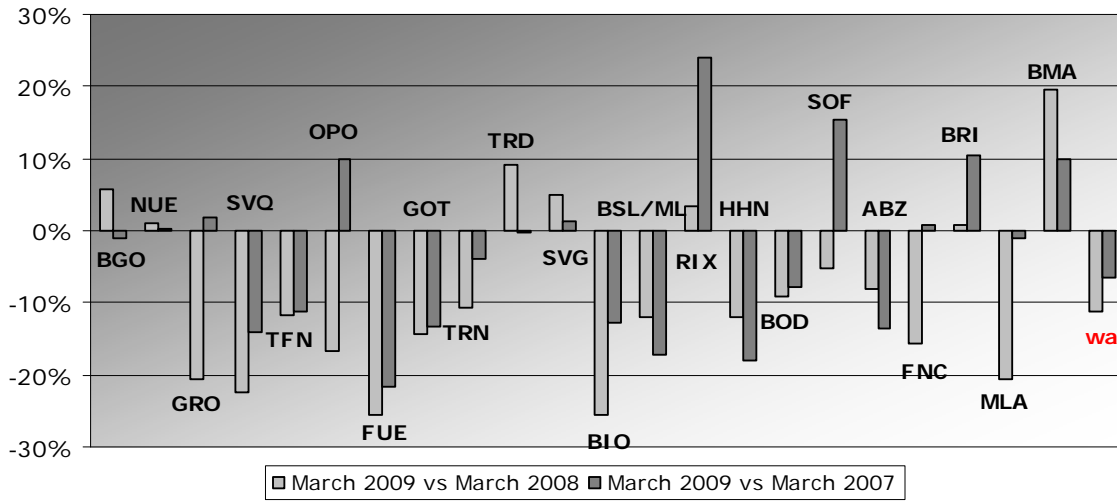
\*weighted average = SUM(%change\*pax)/SUM(pax)



**Group 4**  
**Airports welcoming less than 5 million passengers**  
**per year (percentage traffic variation March 2009 versus 2008 and 2007)**

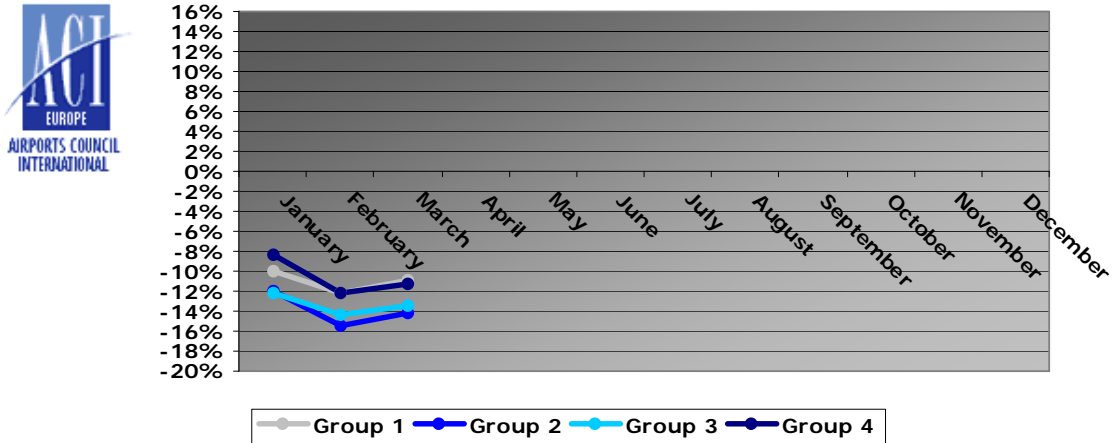
Airport	2009v2008 variation %	2009v2007 variation %
BGO	5,8%	-1,1%
NUE	1,0%	0,3%
GRO	-20,7%	1,8%
SVQ	-22,3%	-14,1%
TFN	-11,6%	-11,1%
OPO	-16,6%	9,8%
FUE	-25,7%	-21,6%
GOT	-14,3%	-13,4%
TRN	-10,7%	-3,9%
TRD	9,2%	-0,3%
SVG	4,9%	1,3%
BIO	-25,6%	-12,7%
BSL/ML	-12,1%	-17,2%
RIX	3,3%	24,1%
HHN	-11,9%	-18,1%
BOD	-9,0%	-7,9%
SOF	-5,1%	15,4%
ABZ	-8,1%	-13,4%
FNC	-15,6%	0,9%
BRI	0,7%	10,4%
MLA	-20,7%	-1,1%
BMA	19,6%	9,9%
PIK	-21,9%	-17,9%
TOS	1,4%	-1,1%
SOU	-12,3%	-7,6%
BOO	9,6%	1,0%
MMX	-10,2%	-19,8%
IBZ	-16,7%	-6,1%
FLR	-18,7%	-13,2%
TLL	-25,4%	-18,5%
SXB	-13,7%	-44,9%
VNO	-43,7%	N/A
LJU	-23,5%	N/A
MAH	-21,0%	-16,7%
BOH	-15,5%	N/A
KRS	4,8%	-7,3%
BDS	1,1%	14,3%
AES	9,1%	N/A
HAU	9,5%	-9,5%
SKP	-21,1%	-7,7%
DBV	-35,1%	-13,8%
HUY	10,1%	N/A
LGG	-12,7%	N/A
<b>wa*</b>	<b>-11,2%</b>	<b>-6,4%</b>

\*weighted average=SUM(%change\*pax)/SUM(pax)



## Year-to-date airport passenger trends

The graphic illustrates and compares the trends of the different airport Groups 1, 2, 3 and 4 for 2009.



The graphic compares the amount of total commercial passengers 2009 with 2008. The airports included, in this graphic, are: LHR, FRA, CDG, AMS, MAD, LGW, FCO, MUC, BCN, ORY, STN, MAN, MXP, ZRH, CPH, ARN, DUB, OS L, BRU, VIE, DUS, ATH, PMI, AGP, DME, HEL, TXL, LIS, HAM, PRG.

