



# Airport Traffic Report

## May 2007

## European passenger traffic up 4.0% during May 2007

The '**ACI EUROPE Airport Traffic Report - May 2007**' includes **102 airports** in total.

The overall **passenger** traffic at European airports increased by **+4.0%** in **May 2007** compared with May 2006. The overall **freight** traffic among European airports increased **+2.6%** in May 2007 when compared with the corresponding month in 2006. The overall figure for **movements** at European airports increased **+3.3%** in May 2007 when compared with May 2006.

Passenger figures for May 2007 once again indicate that Group 4 airports (airports welcoming less than 5 million passengers per year) had the largest increase in traffic - with an average increase of **+7.2%** when compared with May 2006 - and an average increase of **+18.1%** when compared with May 2005.

Airports welcoming more than 25 million passengers per year (Group 1), airports welcoming between 10 and 25 million passengers (Group 2) and airports welcoming between 5 and 10 million passengers (Group 3) reported an average increase of **+3.3%**, **+3.7%** and **+3.6%** respectively when compared with May 2006. The same comparison of May 2007 with May 2005 demonstrates an average increase of **+8.5%**, **+11.2%** and **+8.6%** respectively.

Examples of airports that experienced the highest increase in passenger traffic per group, when comparing May 2007 with May 2006, include:

- **Group 1 airports** – Madrid (**+11.8%**), Munich (**+8.4%**) and Barcelona (**6.8%**);
- **Group 2 airports** – Moscow- Domodedovo (**+18.7%**), Athens (**+11.7%**) and Vienna (**+8.0%**);
- **Group 3 airports** – Moscow-Vnukovo (**+26.5%**), Warsaw (**+12.5%**) and Venice (**+8.2%**);
- **Group 4 airports** – Girona (**+30.3%**), Riga (**+27.0%**) and Valencia (**+17.3%**).

Airports		Passengers				Commercial movements		Freight (metric tonnes)	
		May 2007	2007v 2006 variation %	January – May	2007v 2006 variation %	May 2007	2007v 2006 variation %	May 2007	2007v 2006 variation %
1	<b>London Heathrow</b> (LHR)	5,629,800	-1.8%	26,673,500	-1.0%	40,621	0.0%	111,613	5.8%
2	<b>Paris Roissy</b> (CDG)	5,040,900	1.2%	23,220,200	5.0%	46,517	0.2%	N/A	N/A
3	<b>Frankfurt</b> (FRA)	4,665,600	0.6%	20,862,000	3.1%	41,667	-0.4%	167,840	0.6%
4	<b>Madrid</b> (MAD)	4,335,600	11.8%	19,982,200	13.8%	41,925	12.9%	26,176	-0.7%
5	<b>Amsterdam</b> (AMS)	4,296,400	2.7%	18,133,400	4.7%	39,510	3.6%	126,192	3.9%
6	<b>London Gatwick</b> (LGW)	3,015,200	2.0%	12,725,400	2.6%	22,797	1.7%	13,909	-27.4%
7	<b>Munich</b> (MUC)	2,942,500	8.4%	12,998,600	10.7%	35,933	5.0%	20,015	9.5%
8	<b>Barcelona</b> (BCN)	2,883,600	6.8%	12,347,500	8.2%	31,331	9.6%	8,998	13.4%
9	<b>Rome-Fiumicino</b> (FCO)	2,879,000	4.1%	12,245,000	6.3%	27,323	-2.1%	11,412	4.6%
10	<b>Palma de Mallorca</b> (PMI)	2,354,800	3.3%	6,964,900	2.3%	20,195	8.8%	2,186	9.8%
11	<b>Paris Orly</b> (ORY)	2,177,900	-0.6%	10,600,500	3.5%	19,886	0.3%	N/A	N/A
12	<b>London Stansted</b> (STN)	2,088,700	-1.2%	9,114,100	0.9%	17,050	-1.0%	17,320	-10.5%
13	<b>Dublin</b> (DUB)	2,011,400	7.0%	8,636,500	11.4%	17,143	4.1%	8,356	-15.3%
14	<b>Manchester</b> (MAN)	1,990,600	-3.2%	8,013,300	-1.7%	18,803	-2.1%	12,829	9.9%
15	<b>Milan-Malpensa</b> (MXP)	1,939,200	4.7%	9,090,100	10.3%	21,960	2.9%	41,005	22.5%
16	<b>Copenhagen</b> (CPH)	1,857,500	1.5%	8,159,600	2.5%	22,280	-1.0%	N/A	N/A
17	<b>Zurich</b> (ZRH)	1,735,000	4.9%	7,879,800	8.9%	19,288	-0.2%	21,337	1.0%
18	<b>Oslo</b> (OSL)	1,676,200	5.3%	7,250,600	8.3%	19,094	2.5%	5,868	0.3%
19	<b>Vienna</b> (VIE)	1,625,800	8.0%	6,845,300	8.9%	21,891	4.8%	15,891	-2.9%
20	<b>Brussels</b> (BRU)	1,588,500	2.7%	6,506,100	3.0%	21,203	1.8%	55,392	-2.3%
21	<b>Düsseldorf</b> (DUS)	1,576,900	4.5%	6,485,300	7.5%	18,903	5.6%	4,524	-0.5%
22	<b>Stockholm-Arlanda</b> (ARN)	1,573,200	-4.1%	7,122,200	-0.4%	17,789	-8.9%	N/A	N/A
23	<b>Athens</b> (ATH)	1,501,300	11.7%	5,842,800	10.2%	16,202	6.8%	8,815	-3.0%
24	<b>Moscow-Domodedovo</b> (DME)	1,465,400	18.7%	6,051,600	18.4%	14,650	21.5%	9,980	7.6%
25	<b>Malaga</b> (AGP)	1,273,000	1.5%	4,862,200	1.9%	11,453	4.7%	499	39.8%
26	<b>Berlin</b> (TXL)	1,165,100	6.0%	4,942,700	8.0%	12,618	6.2%	1,302	-0.2%

Airports		Passengers				Commercial movements		Freight (metric tonnes)	
		May 2007	2007v 2006 variation %	January – May	2007v 2006 variation %	May 2007	2007v 2006 variation %	May 2007	2007v 2006 variation %
27	<b>Lisbon</b> (LIS)	1,136,000	6.9%	4,950,000	8.1%	12,162	6.1%	7,442	-4.2%
28	<b>Hamburg</b> (HAM)	1,119,900	3.0%	4,805,800	3.3%	13,140	1.9%	6,462	1.7%
29	<b>Helsinki</b> (HEL)	1,079,000	3.8%	5,156,500	5.7%	15,639	-1.1%	10,315	1.2%
30	<b>Prague</b> (PRG)	1,054,600	4.5%	4,398,000	10.8%	15,086	3.1%	4,185	5.3%
31	<b>Nice</b> (NCE)	1,006,000	3.8%	3,790,000	3.5%	12,345	3.1%	807	-18.2%
32	<b>Cologne/Bonn</b> (CGN)	963,600	5.9%	3,899,700	6.0%	12,803	3.3%	61,612	5.8%
33	<b>Stuttgart</b> (STR)	928,400	4.0%	3,798,100	-2.1%	11,919	2.7%	1,540	4.1%
34	<b>Milan Linate</b> (LIN)	897,500	1.0%	3,947,200	0.8%	8,394	-7.7%	1,575	-5.6%
35	<b>Birmingham</b> (BHX)	830,100	-0.9%	3,332,400	-1.2%	9,383	-6.4%	983	-16.4%
36	<b>Alicante</b> (ALC)	826,300	0.6%	3,183,500	-0.4%	7,141	7.1%	366	-10.0%
37	<b>Warsaw</b> (WAW)	813,900	12.5%	3,305,000	14.1%	11,585	4.9%	4,196	7.1%
38	<b>Glasgow</b> (GLA)	812,800	4.2%	3,167,100	2.4%	8,499	-1.5%	400	-29.2%
39	<b>Edinburgh</b> (EDI)	805,000	5.8%	3,400,300	3.8%	10,120	-0.4%	1,420	-54.1%
40	<b>Geneva</b> (GVA)	799,800	7.7%	4,663,900	7.1%	10,554	10.3%	2,622	14.7%
41	<b>Budapest</b> (BUD)	734,900	0.2%	3,034,200	2.5%	10,324	-2.2%	4,406	-4.2%
42	<b>Gran Canaria</b> (LPA)	705,600	-4.6%	4,352,300	-0.6%	7,956	-4.2%	3,023	0.4%
43	<b>Venice</b> (VCE)	639,000	8.2%	2,571,400	11.1%	7,231	4.6%	1,775	-12.0%
44	<b>Marseille</b> (MRS)	598,100	8.0%	2,615,800	14.5%	8,395	6.5%	3,088	-5.4%
45	<b>Lyon</b> (LYS)	597,700	0.4%	2,901,300	5.8%	10,629	0.9%	2,851	-13.6%
46	<b>Faro</b> (FAO)	583,600	7.9%	1,739,600	9.9%	4,252	10.0%	56	-18.1%
47	<b>Naples</b> (NAP)	554,600	11.1%	2,052,000	15.4%	5,884	23.8%	241	40.1%
48	<b>Moscow- Vnukovo</b> (VKO)	548,200	26.5%	2,051,300	29.4%	9,914	21.7%	1,651	9.6%
49	<b>Toulouse</b> (TLS)	527,800	-1.7%	2,481,200	1.9%	6,967	-1.8%	4,088	-1.2%
50	<b>Liverpool</b> (LPL)	519,200	17.1%	2,147,100	13.7%	4,491	0.1%	294	-22.2%
51	<b>Tenerife Sur</b> (TFS)	514,000	-7.0%	3,619,700	-1.9%	3,954	-2.5%	672	-8.1%
52	<b>Hanover</b> (HAJ)	507,000	0.9%	2,031,200	-1.2%	6,189	-2.4%	285	-13.4%
53	<b>Valencia</b> (VLC)	506,600	17.3%	2,223,700	20.5%	7,273	17.2%	1,135	1.8%

Airports		Passengers				Commercial movements		Freight (metric tonnes)	
		May 2007	2007v 2006 variation %	January - May	2007v 2006 variation %	May 2007	2007v 2006 variation %	May 2007	2007v 2006 variation %
54	Rome-Ciampino(CIA)	487,600	12.2%	2,221,300	17.3%	3,707	3.3%	2,157	1.7%
55	Nottingham East Midlands (EMA)	484,000	8.7%	1,945,600	21.7%	5,804	8.9%	23,502	4.9%
56	Milan/Orio al Serio (BGY)	464,800	7.3%	2,198,200	15.0%	4,771	7.3%	11,803	-5.6%
57	Girona (GRO)	430,200	30.3%	1,646,500	24.0%	3,290	43.1%	9	-93.1%
58	Ibiza (IBZ)	419,700	-0.1%	944,800	4.7%	4,668	7.0%	387	-2.0%
59	Bergen (BGO)	414,400	3.3%	1,791,300	7.7%	6,505	0.5%	706	187.6%
60	Sevilla (SVQ)	404,200	8.9%	1,747,000	12.7%	4,514	12.3%	692	-40.4%
61	Lanzarote (ACE)	401,600	2.1%	2,195,200	0.8%	3,838	11.3%	461	3.1%
62	Goteborg (GOT)	391,800	-1.3%	1,704,200	0.5%	5,491	-4.1%	5,739	22.3%
63	Basel-Mulhouse (BSL/ML)	375,200	6.3%	1,268,800	15.1%	4,991	0.2%	3,924	48.4%
64	Bilbao (BIO)	372,500	10.2%	1,579,800	7.9%	5,080	10.1%	297	-6.0%
65	Hahn (HHN)	358,600	10.3%	1,566,700	17.0%	3,325	6.4%	7,756	-6.2%
66	Tenerife Norte (TFN)	346,600	-2.8%	1,668,900	2.8%	4,921	1.9%	2,091	11.4%
67	Nuremberg (NUE)	345,700	12.0%	1,662,600	1.5%	5,588	8.6%	914	-2.8%
68	Fuerteventura (FUE)	335,300	-0.5%	1,781,600	5.0%	3,272	1.8%	259	-1.8%
69	Porto (OPO)	328,000	13.9%	1,432,900	17.9%	4,186	4.8%	2,804	-10.0%
70	Aberdeen (ABZ)	301,700	10.0%	1,335,800	10.3%	9,263	7.7%	371	1.6%
71	Trondheim (TRD)	300,200	3.6%	1,339,500	9.0%	4,157	-1.0%	249	48.8%
72	Bordeaux (BOD)	298,100	3.9%	1,322,300	5.6%	4,488	2.6%	549	-25.6%
73	Stavanger (SVG)	294,900	3.1%	1,302,500	8.4%	4,678	6.1%	287	-5.3%
74	Turin (TRN)	290,200	8.4%	1,459,900	2.8%	4,199	9.3%	79	-30.1%
75	Riga (RIX)	272,100	27.0%	1,110,400	23.4%	4,111	17.1%	804	-40.6%
76	Menorca (MAH)	262,800	-0.9%	610,600	8.7%	2,993	4.2%	331	-3.5%
77	Malta (MLA)	261,600	5.8%	945,300	4.2%	2,706	6.5%	1420	6.5%
78	Madeira (FNC)	209,000	-1.2%	973,600	0.6%	1,873	-11.1%	574	-15.9%
79	Charleroi (CRL)	196,900	0.3%	947,900	19.7%	1,245	-3.5%	N/A	N/A

Airports		Passengers				Commercial movements		Freight (metric tonnes)	
		May 2007	2007v 2006 variation %	January - May	2007v 2006 variation %	May 2007	2007v 2006 variation %	May 2007	2007v 2006 variation %
80	Florence (FLR)	184,700	7.8%	N/A	N/A	2,547	7.9%	6	-44.0%
81	Stockholm-Bromma (BMA)	180,500	13.6%	768,100	14.0%	3,155	9.1%	14	250.0%
82	Southampton (SOU)	175,100	0.6%	730,500	4.4%	4,283	3.2%	23	4.5%
83	Malmö (MMX)	173,800	-4.8%	767,500	-3.6%	2,398	-2.1%	3,496	3.7%
84	Strasbourg (SXB)	171,000	-7.3%	788,500	-1.9%	3,284	-6.3%	54	0.0%
85	Vilnius (VNO)	148,800	16.5%	N/A	N/A	2,631	2.9%	373	9.1%
86	Tromsø (TOS)	142,400	2.4%	633,100	4.4%	2,710	-0.8%	194	-4.3%
87	Olbia (OLB)	141,600	-7.4%	N/A	N/A	1,487	-1.7%	108	31.7%
88	Bodo (BOO)	134,300	5.8%	589,800	6.9%	3,231	0.3%	139	10.8%
89	Ljubljana (LJU)	123,600	11.9%	483,100	10.9%	2,956	18.7%	1,105	148.9%
90	Dubrovnik (DBV)	120,800	-9.1%	265,800	-0.4%	1,202	-12.8%	67	2.5%
91	Kristiansand (KRS)	78,200	3.5%	341,000	8.5%	1,855	13.3%	47	19.8%
92	Alesund (AES)	68,200	2.4%	297,300	4.1%	887	2.4%	83	35.7%
93	Haugesund (HAU)	41,600	-0.1%	206,200	14.2%	678	-0.7%	24	7.6%
94	Liege (LGG)	29,200	-5.1%	81,700	1.5%	2,374	12.8%	39,139	19.0%
95	Ohrid (OHD)	2,700	-13.5%	13,600	-10.0%	52	-25.7%	1	-9.2%
96	Skopje (SKP)	N/A	N/A	N/A	N/A	N/A	N/A	N/A	N/A
97	Bologna (BLQ)	N/A	N/A	N/A	N/A	N/A	N/A	N/A	N/A
98	Bucharest (OTP)	N/A	N/A	N/A	N/A	N/A	N/A	N/A	N/A
99	Glasgow Prestwick (PIK)	N/A	N/A	N/A	N/A	N/A	N/A	N/A	N/A
100	Katowice (KTW)	N/A	N/A	N/A	N/A	N/A	N/A	N/A	N/A
101	Bournemouth (BOH)	N/A	N/A	N/A	N/A	N/A	N/A	N/A	N/A
102	Humberside (HUY)	N/A	N/A	N/A	N/A	N/A	N/A	N/A	N/A

----- Preliminary traffic figures -----

\*Terminal passengers

\*\*Freight & Mail

\*\*\* N/A due to runway closure

### **Total commercial passengers**

**International passengers** (enplaned + deplaned) + **domestic passengers** (enplaned + deplaned) + **direct transit passengers** (passengers who arrive at and depart from the airport on a flight bearing the same number. They are counted only ONCE).

### **Commercial movements**

Landing or take off of an aircraft operating a scheduled or non scheduled commercial service.

### **Freight**

Freight loaded and unloaded (arriving or departing) at the airport. Freight comprises goods, newspapers, diplomatic bags, parcel post and express parcel.

**The ten largest airports on freight – reporting to  
ACI EUROPE**  
(metric tonnes)

Airports		May 2007	2007v2006 variation %
1	Frankfurt (FRA)	167,840	0.6%
2	Amsterdam (AMS)	126,192	3.9%
3	London Heathrow (LHR)	111,613	5.8%
4	Cologne/Bonn (CGN)	61,612	5.8%
5	Brussels (BRU)	55,392	-2.3%
6	Milan-Malpensa (MXP)	41,005	22.5%
7	Liege (LGG)	39,139	19.0%
8	Madrid (MAD)	26,176	-0.7%
9	Nottingham East Midlands (EMA)	23,502	4.9%
10	Zurich (ZRH)	21,337	1.0%

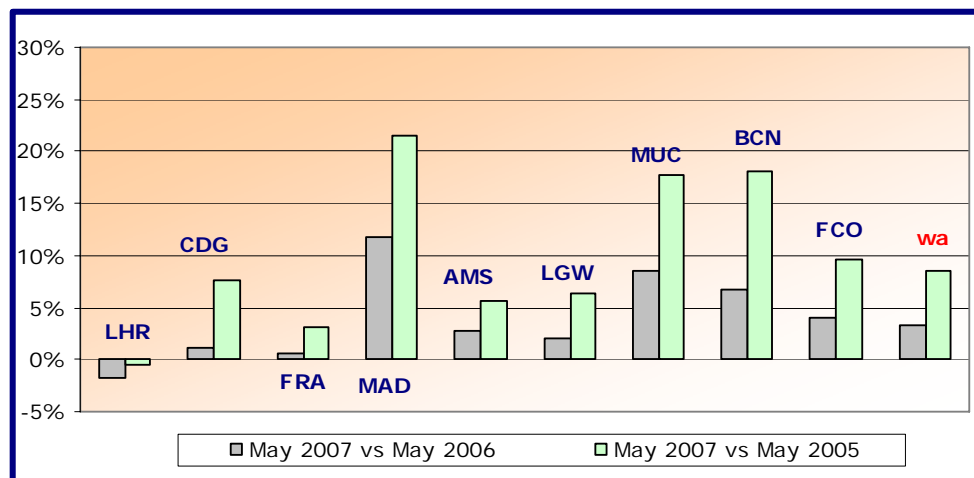
\* Table only includes airports that send statistics regarding freight to ACI EUROPE

**Group 1**

**Airports welcoming more than 25 million passengers per year  
(percentage traffic variation May 2007 versus 2006 and 2005)**

Airport	2007v2006 variation %	2007v2005 variation %
LHR	-1.8%	-0.5%
CDG	+1.2%	+7.6%
FRA	+0.6%	+3.2%
MAD	+11.8%	+21.6%
AMS	+2.7%	+5.7%
LGW	+2.0%	+6.4%
MUC	+8.4%	+17.7%
BCN	+6.8%	+18.1%
FCO	+4.1%	+9.6%
<b>wa*</b>	<b>+3.3%</b>	<b>+8.5%</b>

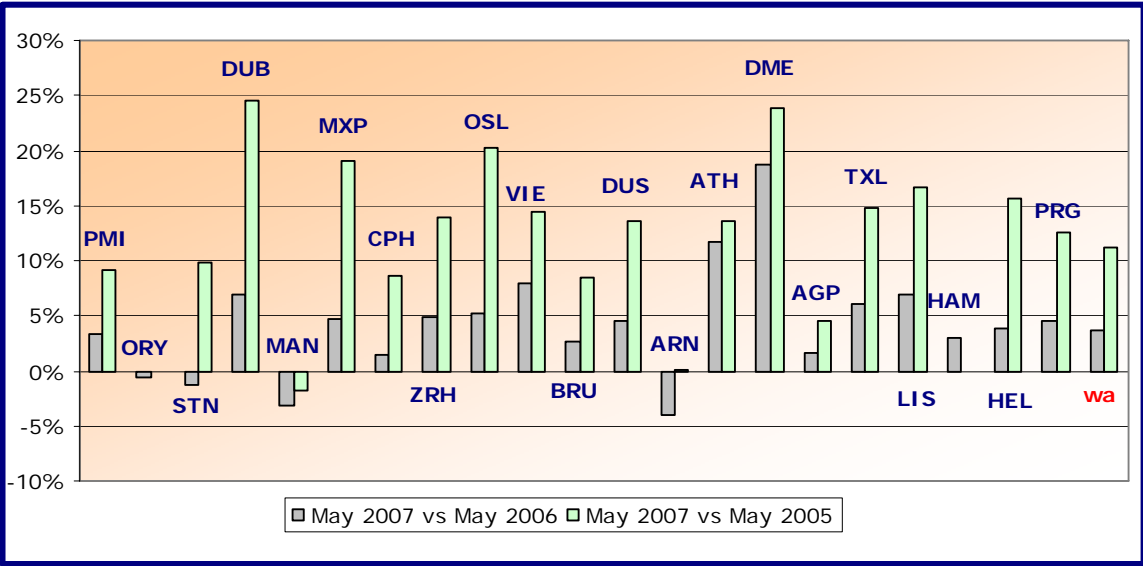
\* weighted average =  $\text{SUM}(\% \text{change} * \text{pax}) / \text{SUM}(\text{pax})$



**Group 2**  
**Airports welcoming between 10 and 25 million passengers**  
**per year (percentage traffic variation May 2007 versus 2006 and 2005)**

Airport	2007v2006 variation %	2007v2005 variation %
PMI	+3.3%	+9.1%
ORY	-0.6%	N/A
STN	-1.2%	+9.9%
DUB	+7.0%	+24.6%
MAN	-3.2%	-1.9%
MXP	+4.7%	+19.0%
CPH	+1.5%	+8.7%
ZRH	+4.9%	+14.0%
OSL	+5.3%	+20.2%
VIE	+8.0%	+14.5%
BRU	+2.7%	+8.4%
DUS	+4.5%	+13.6%
ARN	-4.1%	+0.1%
ATH	+11.7%	+13.6%
DME	+18.7%	+23.9%
AGP	+1.5%	+4.5%
TXL	+6.0%	+14.7%
LIS	+6.9%	+16.7%
HAM	+3.0%	N/A
HEL	+3.8%	+15.6%
PRG	+4.5%	+12.5%
<b>wa*</b>	<b>+3.7%</b>	<b>+11.2%</b>

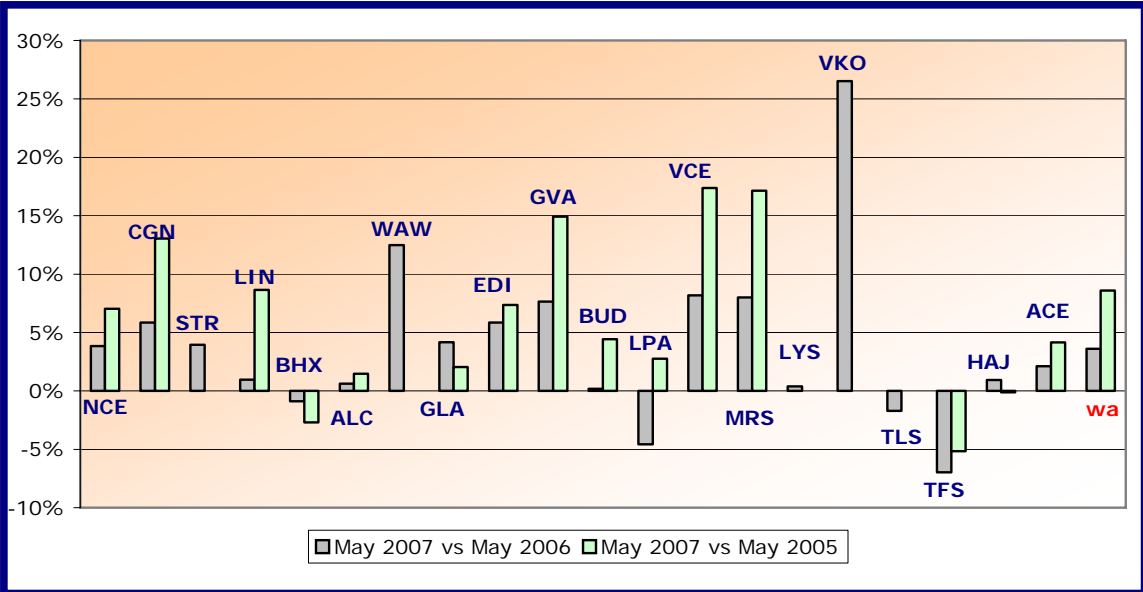
\*weighted average=SUM(%change\*pax)/SUM(pax)



**Group 3**  
**Airports welcoming between 5 and 10 million passengers**  
**per year (percentage traffic variation May 2007 versus 2006 and 2005)**

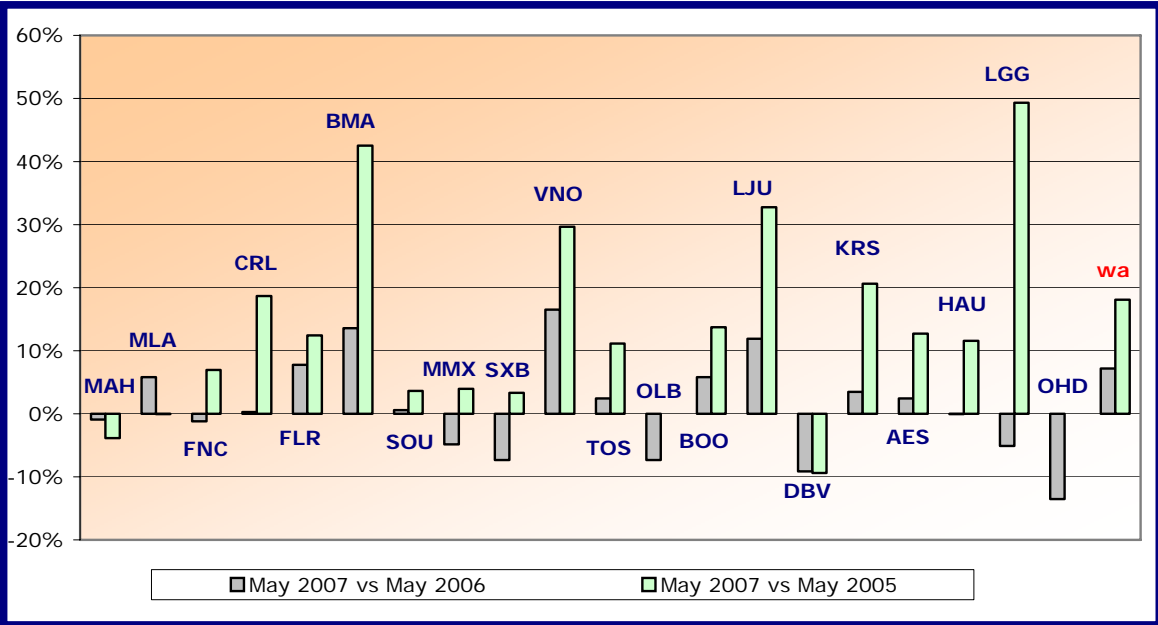
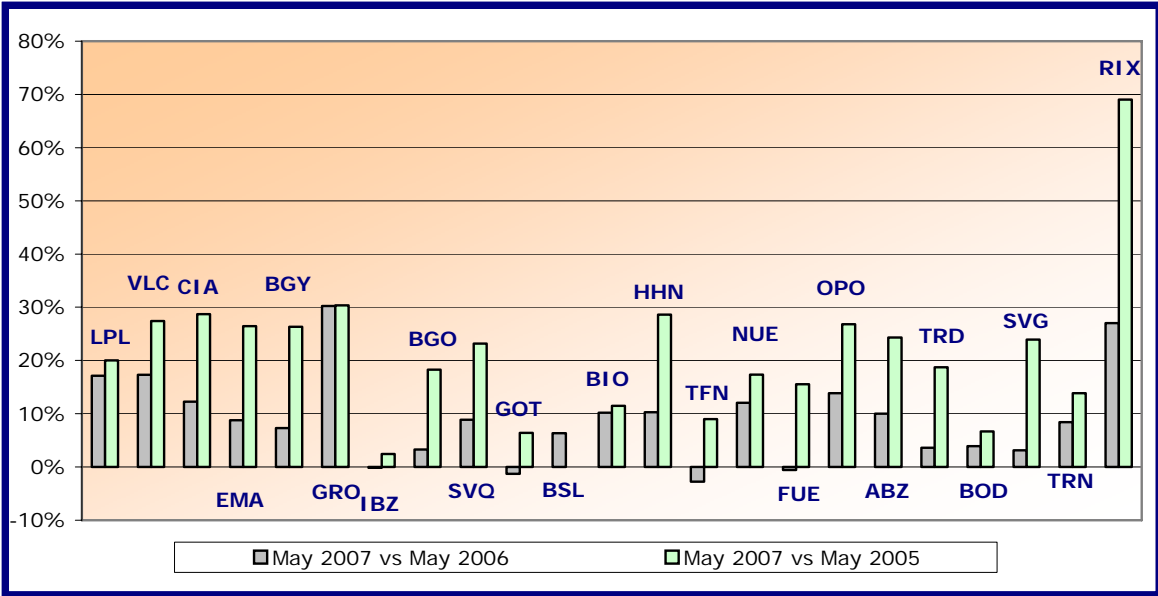
Airport	2007v2006 variation %	2007v2005 variation %
NCE	+3.8%	+7.0%
CGN	+5.9%	+13.1%
STR	+4.0%	N/A
LIN	+1.0%	+8.7%
BHX	-0.9%	-2.7%
ALC	+0.6%	+1.5%
WAW	+12.5%	N/A
GLA	+4.2%	+2.0%
EDI	+5.8%	+7.4%
GVA	+7.7%	+14.9%
BUD	+0.2%	+4.4%
LPA	-4.6%	+2.8%
VCE	+8.2%	+17.4%
MRS	+8.0%	+17.1%
LYS	+0.4%	N/A
VKO	+26.5%	+109.6%
TLS	-1.7%	N/A
TFS	-7.0%	-5.2%
HAJ	+0.9%	-0.1%
ACE	+2.1%	+4.1%
<b>wa*</b>	<b>+3.6%</b>	<b>+8.6%</b>

\*weighted average=SUM(%change\*pax)/SUM(pax)



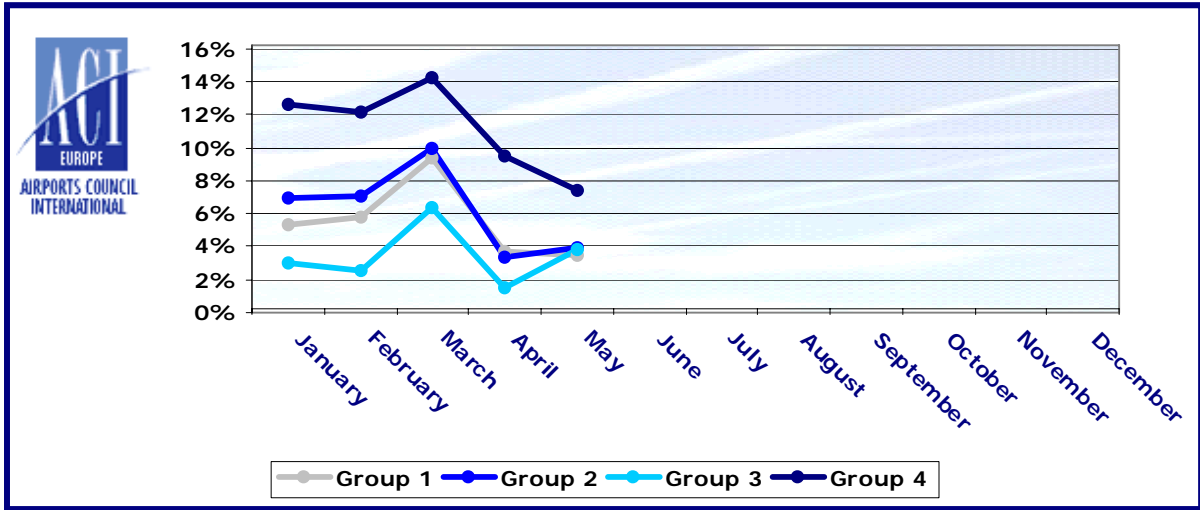
<b>Group 4</b>		
<b>Airports welcoming less than 5 million passengers</b>		
<b>per year (percentage traffic variation May 2007 versus 2006 and 2005)</b>		
<b>Airport</b>	<b>2007v2006 variation %</b>	<b>2007v2005 variation %</b>
LPL	+17.1%	+20.0%
VLC	+17.3%	+27.4%
CIA	+12.2%	+28.7%
EMA	+8.7%	+26.5%
BGY	+7.3%	+26.3%
GRO	+30.3%	+30.3%
IBZ	-0.1%	+2.5%
BGO	+3.3%	+18.3%
SVQ	+8.9%	+23.2%
GOT	-1.3%	+6.4%
BSL/ML	+6.3%	N/A
BIO	+10.2%	+11.5%
HHN	+10.3%	+28.6%
TFN	-2.8%	+9.0%
NUE	+12.0%	+17.4%
FUE	-0.5%	+15.5%
OPO	+13.9%	+26.8%
ABZ	+10.0%	+24.3%
TRD	+3.6%	+18.7%
BOD	+3.9%	+6.7%
SVG	+3.1%	+23.9%
TRN	+8.4%	+13.9%
RIX	+27.0%	+69.1%
MAH	-0.9%	-3.9%
MLA	+5.8%	+0.0%
FNC	-1.2%	+7.0%
CRL	+0.3%	+18.7%
FLR	+7.8%	+12.4%
BMA	+13.6%	+42.5%
SOU	+0.6%	+3.6%
MMX	-4.8%	+4.0%
SXB	-7.3%	+3.3%
VNO	+16.5%	+29.7%
TOS	+2.4%	+11.1%
OLB	-7.4%	N/A
BOO	+5.8%	+13.7%
LJU	+11.9%	+32.8%
DBV	-9.1%	-9.4%
KRS	+3.5%	+20.6%
AES	+2.4%	+12.7%
HAU	-0.1%	+11.6%
LGG	-5.1%	+49.3%
OHD	-13.5%	N/A
<b>wa*</b>	<b>+7.2%</b>	<b>+18.1%</b>

\*weighted average=SUM(%change\*pax)/SUM(pax)



## Year-to-date airport passenger trends

The graphic illustrates and compares the trends of the different airport Groups 1, 2, 3 and 4 for 2007.



The graphic compares the amount of total commercial passengers 2007 with 2006, 2005, 2004, 2003, 2002 and 2001. The airports included, in this graphic, are: LHR, FRA, CDG, AMS, MAD, LGW, FCO, MUC, BCN, ORY, STN, MAN, MXP, ZRH, CPH, ARN, DUB, OSL, BRU, VIE, DUS, ATH, PMI, AGP, DME, HEL, TXL, LIS, HAM, PRG.

