



# Airport Traffic Report October 2007

## European passenger traffic up 7.1% during October 2007

The '**ACI EUROPE Airport Traffic Report - October 2007**' includes **106 airports** in total. Bari (BRI) and Brindisi (BDS) are the latest airports to be included in the report.

The overall **passenger** traffic at European airports increased by **+7.1%** in **October 2007** compared with October 2006. The overall **freight** traffic among European airports increased **+4.8%** in October 2007 when compared with the corresponding month in 2006. The overall figure for **movements** at European airports increased **+4.3%** in October 2007 when compared with October 2006.

Passenger figures for October 2007 once again indicate that Group 4 airports (airports welcoming less than 5 million passengers per year) had the largest increase in traffic - with an average increase of **+9.4%** when compared with October 2006 - and an average increase of **+19.9%** when compared with October 2005.

Airports welcoming more than 25 million passengers per year (Group 1), airports welcoming between 10 and 25 million passengers (Group 2) and airports welcoming between 5 and 10 million passengers (Group 3) reported an average increase of **+6.5%**, **+7.4%** and **+5.9%** respectively when compared with October 2006. The same comparison of October 2007 with October 2005 demonstrates an average increase of **+10.9%**, **+13.3%** and **+9.0%** respectively.

Examples of airports that experienced the highest increase in passenger traffic per group, when comparing October 2007 with October 2006, include:

- **Group 1 airports** – Madrid (**+14.5%**), Rome Fiumicino (**+12.9%**) and Munich (**12.5%**);
- **Group 2 airports** – Moscow- Domodedovo (**+26.7%**), Berlin (**+19.3%**) and Vienna (**+14.1%**);
- **Group 3 airports** – Moscow-Vnukovo (**+46.3%**), Marseille (**+19.0%**) and Warsaw (**+13.5%**);
- **Group 4 airports** – Katowice (**+45.1%**), Girona (**+36.9%**) and Riga (**+31.2%**).

Airports		Passengers				Commercial movements		Freight (metric tonnes)	
		October 2007	2007v 2006 variation %	January – October	2007v 2006 variation %	October 2007	2007v 2006 variation %	October 2007	2007v 2006 variation %
1	<b>London Heathrow</b> (LHR)	5,854,100	3.7%	57,442,200	0.4%	40,890	1.1%	114,665	3.2%
2	<b>Paris Roissy</b> (CDG)	4,999,500	1.4%	50,745,400	5.3%	45,514	-1.2%	N/A	N/A
3	<b>Frankfurt</b> (FRA)	4,958,600	3.2%	45,986,300	2.3%	41,993	1.4%	182,610	2.4%
4	<b>Madrid</b> (MAD)	4,723,600	14.5%	43,870,600	14.4%	42,256	11.5%	31,019	0.9%
5	<b>Amsterdam</b> (AMS)	4,385,800	4.2%	40,956,200	3.8%	38,653	0.6%	147,181	5.5%
6	<b>Munich</b> (MUC)	3,168,800	12.5%	28,785,500	10.7%	36,416	7.4%	23,176	9.1%
7	<b>London Gatwick</b> (LGW)	3,096,100	4.8%	30,496,900	2.9%	22,746	2.1%	14,334	-17.0%
8	<b>Rome-Fiumicino</b> (FCO)	3,069,800	12.9%	28,026,300	9.1%	29,171	6.6%	12,651	9.2%
9	<b>Barcelona</b> (BCN)	2,950,700	8.3%	28,141,700	10.1%	30,542	6.4%	8,511	0.7%
10	<b>Palma de Mallorca</b> (PMI)	2,201,900	2.8%	21,382,100	3.5%	18,095	-0.4%	1,873	-15.9%
11	<b>Paris Orly</b> (ORY)	2,115,300	-0.7%	22,368,900	3.5%	19,502	-2.4%	N/A	N/A
12	<b>London Stansted</b> (STN)	2,108,900	1.8%	20,611,600	1.7%	16,928	0.1%	18,743	-3.4%
13	<b>Milan-Malpensa</b> (MXP)	2,038,100	12.0%	20,334,600	9.3%	22,218	5.5%	41,165	6.1%
14	<b>Manchester</b> (MAN)	2,023,500	-1.8%	19,531,000	-1.9%	18,558	-3.0%	16,280	18.3%
15	<b>Dublin</b> (DUB)	2,008,100	9.0%	19,907,800	9.8%	16,923	5.7%	N/A	N/A
16	<b>Zurich</b> (ZRH)	1,941,400	8.6%	17,497,300	7.5%	19,987	4.8%	22,813	9.6%
17	<b>Copenhagen</b> (CPH)	1,932,600	2.5%	18,230,300	2.6%	22,650	-0.4%	N/A	N/A
18	<b>Oslo</b> (OSL)	1,774,800	9.4%	16,174,100	7.4%	20,153	6.2%	6,015	2.9%
19	<b>Düsseldorf</b> (DUS)	1,761,700	9.0%	15,321,300	7.5%	19,520	5.0%	5,138	-6.4%
20	<b>Vienna</b> (VIE)	1,725,300	14.1%	15,768,700	9.9%	22,582	9.5%	18,039	6.1%
21	<b>Moscow-Domodedovo</b> (DME)	1,652,000	26.7%	15,934,800	21.9%	16,053	21.9%	11,946	16.8%
22	<b>Stockholm-Arlanda</b> (ARN)	1,640,800	2.9%	15,133,700	1.3%	19,283	-2.3%	9,925	17.3%
23	<b>Brussels</b> (BRU)	1,618,700	10.5%	15,213,200	5.7%	21,682	7.0%	65,649	4.7%
24	<b>Athens</b> (ATH)	1,425,700	6.1%	14,289,600	9.7%	16,131	6.2%	9,492	-0.7%
25	<b>Berlin</b> (TXL)	1,329,700	19.3%	11,096,600	11.1%	13,356	13.4%	1,560	26.3%
26	<b>Malaga</b> (AGP)	1,284,700	2.0%	11,983,600	4.0%	11,072	0.3%	500	-9.5%

Airports		Passengers				Commercial movements		Freight (metric tonnes)	
		October 2007	2007v 2006 variation %	January – October	2007v 2006 variation %	October 2007	2007v 2006 variation %	October 2007	2007v 2006 variation %
27	Hamburg (HAM)	1,278,200	12.4%	10,831,200	6.2%	14,331	10.3%	2,985	11.2%
28	Lisbon (LIS)	1,188,500	8.1%	11,475,600	8.8%	11,762	3.0%	7,061	-5.2%
29	Helsinki (HEL)	1,163,000	11.3%	10,948,000	6.9%	16,625	6.2%	12,917	13.5%
30	Prague (PRG)	1,112,100	6.6%	10,637,200	7.2%	15,059	4.1%	4,356	-6.5%
31	Cologne/Bonn (CGN)	1,009,600	8.0%	9,016,900	6.1%	12,893	3.1%	65,554	10.8%
32	Stuttgart (STR)	985,700	10.1%	8,899,000	2.4%	12,132	6.0%	1,716	-1.1%
33	Nice (NCE)	903,700	2.2%	9,080,900	4.1%	11,064	2.2%	671	-22.6%
34	Gran Canaria (LPA)	900,800	1.1%	8,448,900	0.0%	8,942	-0.1%	3,250	-2.4%
35	Milan Linate (LIN)	890,000	6.0%	8,453,900	2.8%	8,816	-1.2%	1,638	-5.7%
36	Geneva (GVA)	874,800	9.3%	9,208,100	9.6%	10,716	9.2%	2,528	5.4%
37	Glasgow (GLA)	874,100	-1.0%	7,672,200	0.0%	8,724	-2.0%	304	-20.4%
38	Alicante (ALC)	865,200	1.1%	7,931,200	1.7%	7,010	0.8%	397	-8.3%
39	Birmingham (BHX)	850,200	2.9%	8,033,300	0.7%	9,550	-0.9%	1,159	5.8%
40	Warsaw (WAW)	843,300	13.5%	7,932,100	13.5%	11,672	3.8%	5,067	4.9%
41	Edinburgh (EDI)	820,300	5.0%	7,729,100	5.2%	10,239	-0.8%	2,065	-33.1%
42	Budapest (BUD)	768,200	4.0%	7,412,400	3.0%	10,145	-3.8%	4,996	-13.2%
43	Tenerife Sur (TFS)	747,300	-2.4%	7,066,800	-3.2%	5,155	-1.2%	778	-11.7%
44	Venice (VCE)	655,400	10.0%	6,121,800	11.5%	7,080	-0.8%	1,942	-10.2%
45	Moscow-Vnukovo (VKO)	612,200	46.3%	N/A	N/A	11,153	29.1%	1,969	23.9%
46	Lyon (LYS)	610,400	8.9%	6,210,700	7.8%	11,051	2.8%	2,087	-16.5%
47	Marseille (MRS)	602,800	19.0%	5,944,900	15.2%	8,520	13.3%	3,632	4.1%
48	Hanover (HAJ)	570,500	-4.0%	4,904,100	-2.1%	6,531	-2.6%	405	23.9%
49	Naples (NAP)	558,000	14.2%	5,009,900	13.1%	5,818	10.3%	189	27.8%
50	Faro (FAO)	548,200	5.4%	5,083,000	8.3%	3,987	5.5%	42	-18.8%
51	Toulouse (TLS)	534,200	0.4%	5,021,200	3.6%	7,187	1.6%	4,691	-4.9%
52	Valencia (VLC)	525,100	17.0%	5,034,600	19.4%	7,031	13.3%	1,246	13.7%
53	Nottingham East Midlands (EMA)	475,800	5.9%	4,670,200	14.4%	5,705	4.1%	24,914	0.8%

Airports		Passengers				Commercial movements		Freight (metric tonnes)	
		October 2007	2007v 2006 variation %	January – October	2007v 2006 variation %	October 2007	2007v 2006 variation %	October 2007	2007v 2006 variation %
54	Milan/Orio al Serio (BGY)	474,700	8.0%	4,870,600	9.4%	4,849	8.7%	12,505	-4.2%
55	Lanzarote (ACE)	474,200	-4.2%	4,719,200	-0.5%	4,136	-3.7%	562	7.0%
56	Liverpool (LPL)	463,600	0.2%	4,741,600	12.0%	3,778	-10.4%	342	4.9%
57	Rome-Ciampino(CIA)	460,600	2.7%	4,609,400	12.0%	3,426	-5.4%	2,059	-9.3%
58	Bergen (BGO)	436,600	7.7%	3,902,400	6.0%	6,750	1.5%	248	-3.1%
59	Girona (GRO)	433,100	36.9%	4,098,100	31.0%	3,234	52.1%	20	132.4%
60	Fuerteventura (FUE)	410,400	6.9%	3,886,100	4.3%	3,637	7.1%	270	-1.2%
61	Sevilla (SVQ)	405,000	15.7%	3,818,500	17.2%	4,618	22.5%	619	-45.7%
62	Goteborg (GOT)	403,100	1.4%	3,697,000	1.3%	5,790	-2.1%	4,625	-13.4%
63	Bucharest (OTP)	396,000	24.6%	N/A	N/A	5,591	14.2%	1,273	-7.4%
64	Basel-Mulhouse (BSL/ML)	384,200	0.1%	3,699,500	8.3%	5,113	1.4%	3,659	4.4%
65	Bilbao (BIO)	383,900	9.8%	3,616,800	9.8%	4,910	4.9%	275	-14.7%
66	Bologna (BLQ)	373,000	15.7%	N/A	N/A	5,182	6.0%	1,650	15.1%
67	Hahn (HHN)	372,700	7.2%	3,507,700	12.3%	3,409	7.0%	11,915	13.8%
68	Tenerife Norte (TFN)	358,800	2.8%	3,456,400	2.7%	5,096	3.3%	2,332	12.0%
69	Nuremberg (NUE)	358,300	17.2%	3,539,900	6.7%	5,320	3.5%	1,116	9.5%
70	Ibiza (IBZ)	330,800	1.2%	4,538,200	7.1%	3,658	-4.3%	351	-5.0%
71	Porto (OPO)	324,400	17.8%	3,384,200	16.4%	4,214	5.6%	2,888	-10.1%
72	Stavanger (SVG)	322,400	7.7%	2,793,000	7.1%	5,020	12.2%	262	8.4%
73	Aberdeen (ABZ)	319,500	6.6%	2,916,800	9.9%	9,651	7.3%	305	-5.9%
74	Malta (MLA)	299,100	15.2%	2,630,600	9.6%	2,647	3.2%	1,542	3.4%
75	Bordeaux (BOD)	297,500	2.1%	2,971,200	6.9%	4,598	1.8%	659	-10.9%
76	Turin (TRN)	296,200	14.4%	2,972,300	7.7%	4,358	9.7%	135	-0.5%
77	Trondheim (TRD)	334,500	9.5%	2,856,800	7.4%	4,520	4.8%	230	31.2%
78	Riga (RIX)	296,700	31.2%	2,664,600	27.1%	4,242	24.3%	455	-28.0%
79	Sofia (SOF)	230,100	19.4%	2,267,800	23.4%	3,289	14.1%	1,399	11.4%

Airports		Passengers				Commercial movements		Freight (metric tonnes)	
		October 2007	2007v 2006 variation %	January - October	2007v 2006 variation %	October 2007	2007v 2006 variation %	October 2007	2007v 2006 variation %
80	<b>Glasgow Prestwick</b> (PIK)	228,900	1.0%	N/A	N/A	1,901	4.4%	2,618	-9.4%
81	<b>Bari</b> (BRI)	212,900	19.8%	2,039,900	20.5%	2,424	12.5%	93	65.6%
82	<b>Charleroi</b> (CRL)	219,000	7.1%	2,049,000	13.0%	1,517	16.8%	N/A	N/A
83	<b>Menorca</b> (MAH)	203,300	-5.1%	2,620,400	3.4%	2,400	-3.3%	305	-5.0%
84	<b>Madeira</b> (FNC)	202,600	1.2%	2,068,300	1.1%	1,816	-8.9%	670	14.4%
85	<b>Katowice</b> (KTW)	200,800	45.1%	N/A	N/A	2,026	20.3%	736	26.5%
86	<b>Stockholm-Bromma</b> (BMA)	190,500	8.6%	1,514,500	11.6%	3,435	-2.7%	33	266.7%
87	<b>Malmö</b> (MMX)	186,500	2.1%	1,638,400	0.2%	2,419	-5.5%	3,880	5.8%
88	<b>Florence</b> (FLR)	179,100	3.3%	N/A	N/A	2,485	0.6%	6	-52.6%
89	<b>Southampton</b> (SOU)	179,100	5.7%	1,684,500	2.8%	4,113	2.6%	26	73.3%
90	<b>Vilnius</b> (VNO)	164,200	25.3%	N/A	N/A	3,002	26.9%	388	-6.1%
91	<b>Tallinn</b> (TLL)	161,000	19.3%	1,437,800	10.5%	3,263	38.3%	3,927	694.1%
92	<b>Ljubljana</b> (LJU)	141,500	23.5%	1,317,100	13.4%	3,015	15.3%	1,174	89.4%
93	<b>Bodø</b> (BOO)	140,000	8.6%	1,281,400	5.9%	3,429	1.5%	158	18.5%
94	<b>Tromsø</b> (TOS)	138,500	-0.2%	1,362,500	2.9%	2,870	2.1%	195	-0.6%
95	<b>Strasbourg</b> (SXB)	132,200	-29.5%	1,494,100	-11.8%	3,154	-10.0%	31	-32.6%
96	<b>Dubrovnik</b> (DBV)	102,900	-1.8%	N/A	N/A	1,020	-4.9%	64	8.3%
97	<b>Bournemouth</b> (BOH)	102,000	17.7%	N/A	N/A	N/A	N/A	870	-15.7%
98	<b>Kristiansand</b> (KRS)	81,300	3.2%	738,500	7.4%	1,955	8.5%	43	2.3%
99	<b>Brindisi</b> (BDS)	78,500	21.9%	799,100	12.5%	841	14.9%	14	-17.7%
100	<b>Alesund</b> (AES)	72,100	4.3%	648,400	5.0%	1,023	14.9%	90	10.6%
101	<b>Skopje</b> (SKP)	49,500	20.1%	N/A	N/A	894	11.2%	157	5.1%
102	<b>Haugesund</b> (HAU)	48,900	-4.4%	431,500	6.3%	865	5.0%	30	10.9%
103	<b>Humbly Grove</b> (HUY)	44,600	-12.6%	N/A	N/A	1,419	7.2%	419	12.9%
104	<b>Liege</b> (LGG)	20,400	18.8%	312,600	7.7%	2,379	10.0%	44,399	25.1%
105	<b>Ohrid</b> (OHD)	2,700	-0.1%	N/A	N/A	66	10.0%	1	-22.6%
106	<b>Olbia</b> (OLB)	N/A	N/A	N/A	N/A	N/A	N/A	N/A	N/A

----- Preliminary traffic figures -----

### **Total commercial passengers**

**International passengers** (enplaned + deplaned) + **domestic passengers** (enplaned + deplaned) + **direct transit passengers** (passengers who arrive at and depart from the airport on a flight bearing the same number. They are counted only ONCE).

### **Commercial movements**

Landing or take off of an aircraft operating a scheduled or non scheduled commercial service.

### **Freight**

Freight loaded and unloaded (arriving or departing) at the airport. Freight comprises goods, newspapers, diplomatic bags, parcel post and express parcel.

**The ten largest airports on freight – reporting to  
ACI EUROPE**  
(metric tonnes)

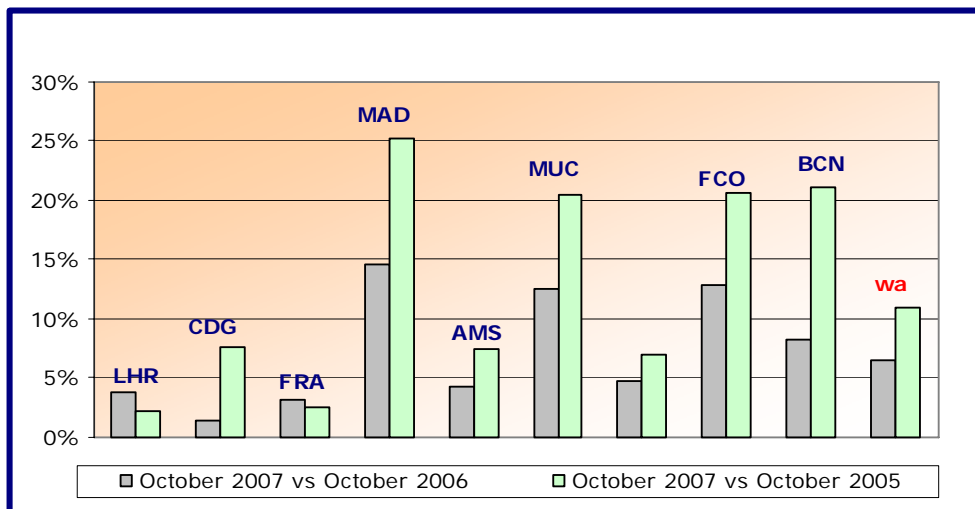
Airports		October 2007	2007v2006 variation %
1	Frankfurt (FRA)	182,610	2.4%
2	Amsterdam (AMS)	147,181	5.5%
3	London Heathrow (LHR)	114,665	3.2%
4	Brussels (BRU)	65,649	4.7%
5	Cologne/Bonn (CGN)	65,554	10.8%
6	Liege (LGG)	44,399	25.1%
7	Milan-Malpensa (MXP)	41,165	6.1%
8	Madrid (MAD)	31,019	0.9%
9	Nottingham East Midlands (EMA)	24,914	0.8%
10	Munich (MUC)	23,176	9.1%

**Group 1**

**Airports welcoming more than 25 million passengers per year  
(percentage traffic variation October 2007 versus 2006 and 2005)**

Airport	2007v2006 variation %	2007v2005 variation %
LHR	+3.7%	+2.2%
CDG	+1.4%	+7.7%
FRA	+3.2%	+2.6%
MAD	+14.5%	+25.2%
AMS	+4.2%	+7.4%
MUC	+12.5%	+20.5%
LGW	+4.8%	+7.0%
FCO	+12.9%	+20.6%
BCN	+8.3%	+21.2%
<b>wa*</b>	<b>+6.5%</b>	<b>+10.9%</b>

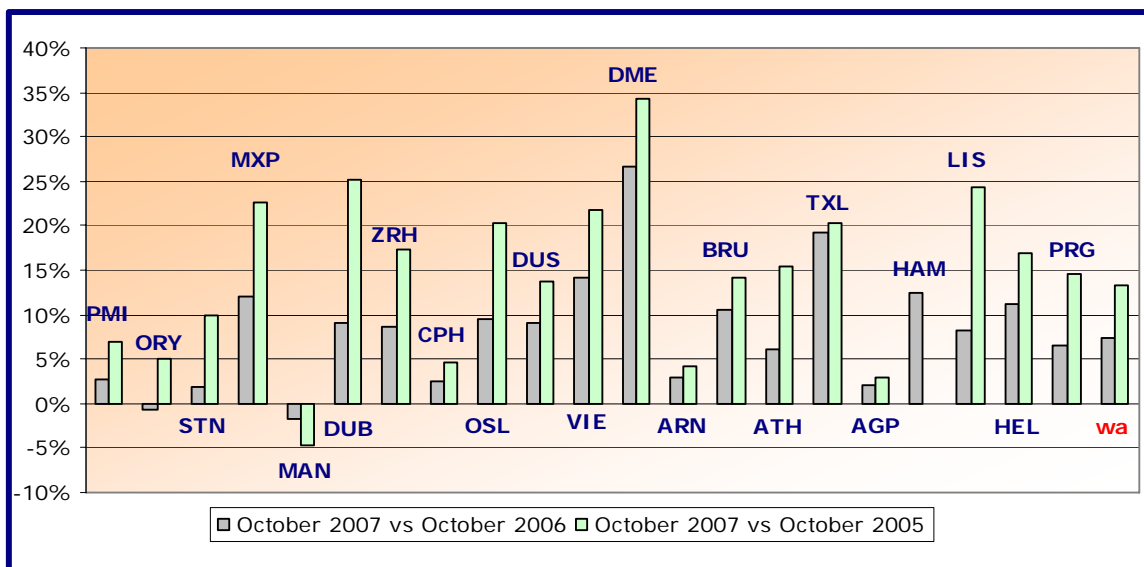
\*weighted average =  $\text{SUM}(\% \text{change} * \text{pax}) / \text{SUM}(\text{pax})$



**Group 2**  
**Airports welcoming between 10 and 25 million passengers**  
**per year (percentage traffic variation October 2007 versus 2006 and 2005)**

Airport	2007v2006 variation %	2007v2005 variation %
PMI	+2.8%	+7.0%
ORY	-0.7%	+5.0%
STN	+1.8%	+9.9%
MXP	+12.0%	+22.6%
MAN	-1.8%	-4.7%
DUB	+9.0%	+25.1%
ZRH	+8.6%	+17.4%
CPH	+2.5%	+4.7%
OSL	+9.4%	+20.2%
DUS	+9.0%	+13.7%
VIE	+14.1%	+21.8%
DME	+26.7%	+34.2%
ARN	+2.9%	+4.2%
BRU	+10.5%	+14.2%
ATH	+6.1%	+15.3%
TXL	+19.3%	+20.3%
AGP	+2.0%	+2.9%
HAM	+12.4%	N/A
LIS	+8.1%	+24.3%
HEL	+11.3%	+17.0%
PRG	+6.6%	+14.6%
<b>wa*</b>	<b>+7.4%</b>	<b>+13.3%</b>

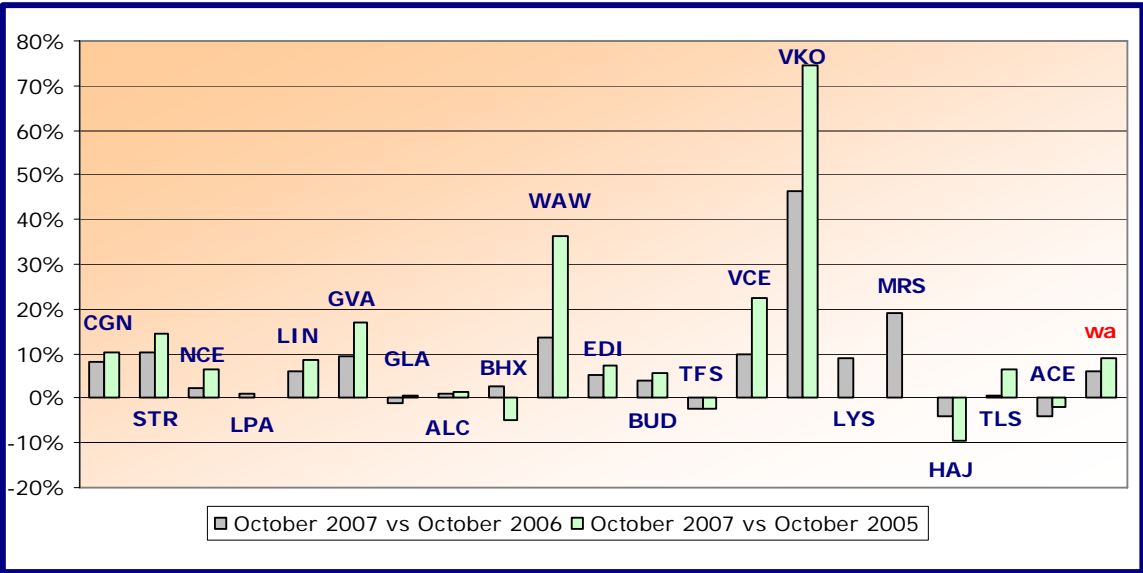
\*weighted average=SUM(%change\*pax)/SUM(pax)



**Group 3**  
**Airports welcoming between 5 and 10 million passengers**  
**per year (percentage traffic variation October 2007 versus 2006 and 2005)**

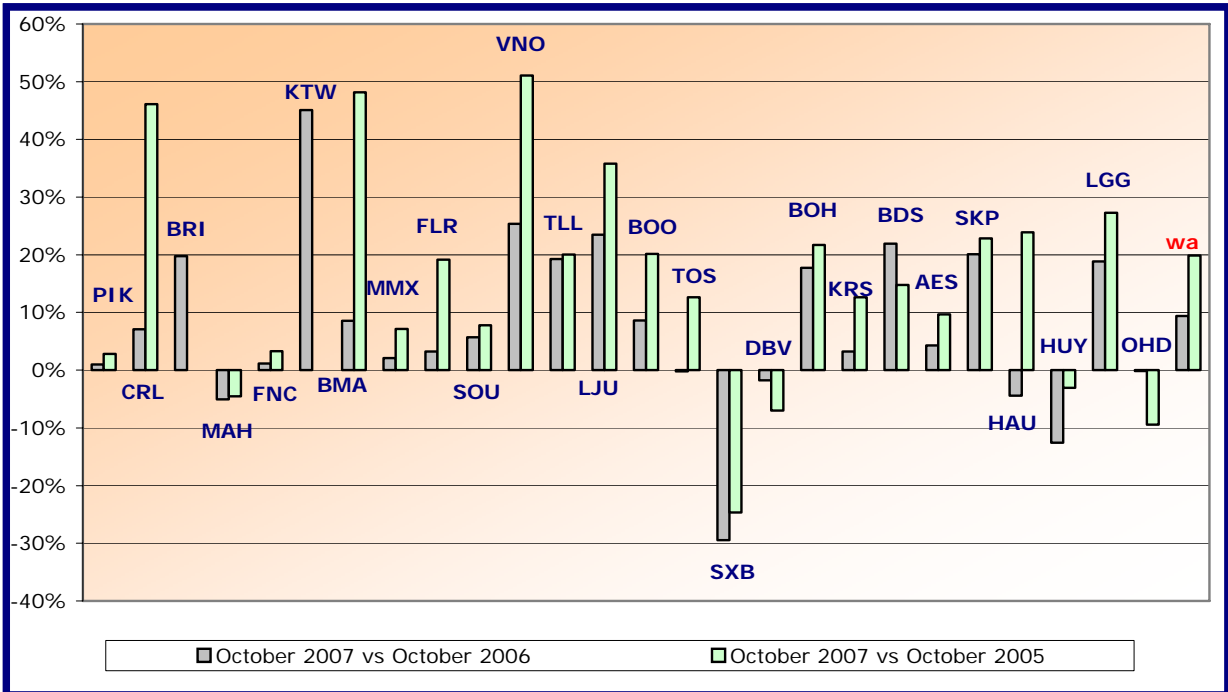
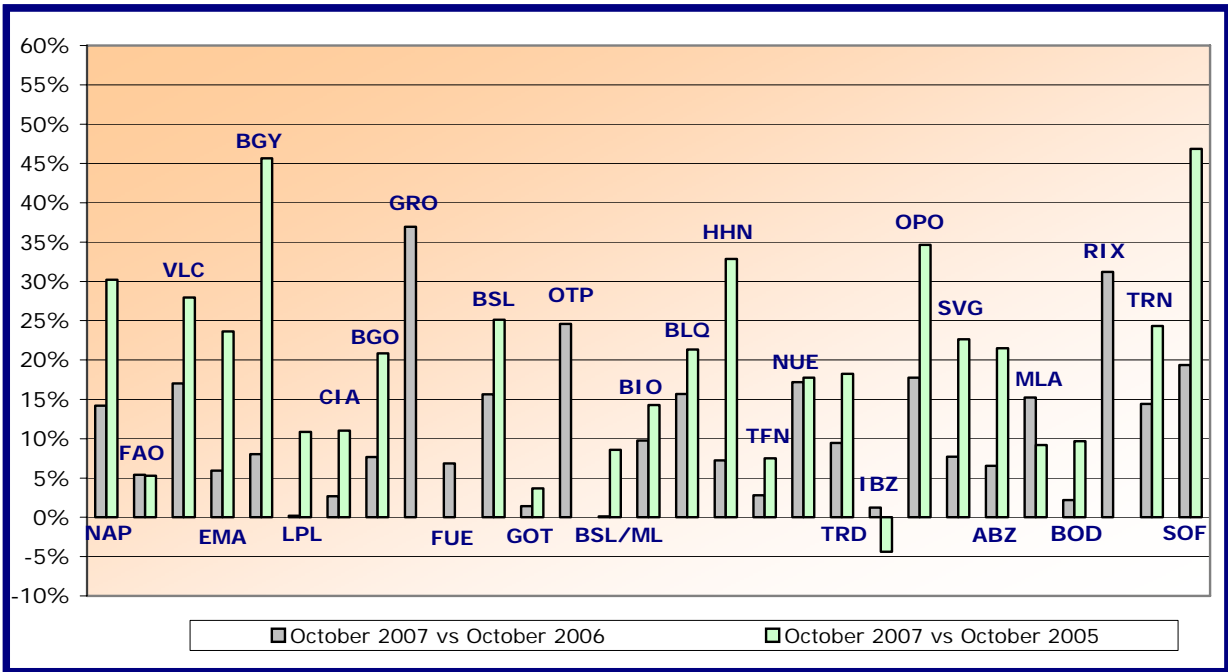
Airport	2007v2006 variation %	2007v2005 variation %
CGN	+8.0%	+10.3%
STR	+10.1%	+14.6%
NCE	+2.2%	+6.3%
LPA	+1.1%	N/A
LIN	+6.0%	+8.6%
GVA	+9.3%	+16.9%
GLA	-1.0%	+0.6%
ALC	+1.1%	+1.5%
BHX	+2.9%	-5.0%
WAW	+13.5%	+36.5%
EDI	+5.0%	+7.2%
BUD	+4.0%	+5.6%
TFS	-2.4%	-2.3%
VCE	+10.0%	+22.3%
VKO	+46.3%	+74.4%
LYS	+8.9%	N/A
MRS	+19.0%	N/A
HAJ	-4.0%	-9.3%
TLS	+0.4%	+6.4%
ACE	-4.2%	-1.9%
<b>wa*</b>	<b>+5.9%</b>	<b>+9.0%</b>

\*weighted average=SUM(%change\*pax)/SUM(pax)



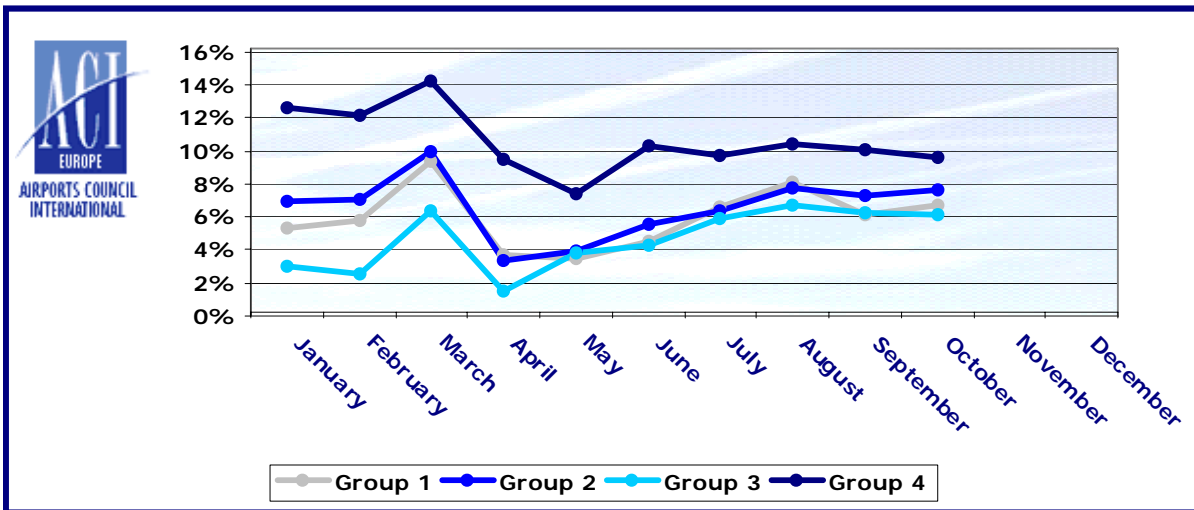
Group 4		
Airports welcoming less than 5 million passengers		
per year (percentage traffic variation October 2007 versus 2006 and 2005)		
Airport	2007v2006 variation %	2007v2005 variation %
NAP	+14.2%	+30.2%
FAO	+5.4%	+5.3%
VLC	+17.0%	+28.0%
EMA	+5.9%	+23.6%
BGY	+8.0%	+45.7%
LPL	+0.2%	+10.9%
CIA	+2.7%	+11.0%
BGO	+7.7%	+20.8%
GRO	+36.9%	N/A
FUE	+6.9%	N/A
SVQ	+15.7%	+25.1%
GOT	+1.4%	+3.7%
OTP	+24.6%	+186.2%
BSL/ML	+0.1%	+8.6%
BIO	+9.8%	+14.3%
BLQ	+15.7%	+21.4%
HHN	+7.3%	+32.8%
TFN	+2.8%	+7.5%
NUE	+17.2%	+17.8%
TRD	+9.5%	+18.2%
IBZ	+1.2%	-4.4%
OPO	+17.8%	+34.7%
SVG	+7.7%	+22.6%
ABZ	+6.6%	+21.5%
MLA	+15.2%	+9.2%
BOD	+2.2%	+9.7%
RIX	+31.2%	+63.3%
TRN	+14.4%	+24.3%
SOF	+19.4%	+46.9%
PIK	+1.0%	+2.8%
CRL	+7.1%	+46.1%
BRI	+19.8%	N/A
MAH	-5.1%	-4.5%
FNC	+1.2%	+3.3%
KTW	+45.1%	N/A
BMA	+8.6%	+48.2%
MMX	+2.1%	+7.1%
FLR	+3.3%	+19.2%
SOU	+5.7%	+7.8%
VNO	+25.3%	+51.1%
TLL	+19.3%	+20.0%
LJU	+23.5%	+35.8%
BOO	+8.6%	+20.1%
TOS	-0.2%	+12.6%
SXB	-29.5%	-24.7%
DBV	-1.8%	-7.0%
BOH	+17.7%	+21.7%
KRS	+3.2%	+12.6%
BDS	+21.9%	+14.8%
AES	+4.3%	+9.6%
SKP	+20.1%	+22.8%
HAU	-4.4%	+23.9%
HUY	-12.6%	-3.1%
LGG	+18.8%	+27.3%
OHD	-0.1%	-9.4%
<b>wa*</b>	<b>+9.4%</b>	<b>+19.9%</b>

\*weighted average = SUM(%change \* pax) / SUM(pax)



## Year-to-date airport passenger trends

The graphic illustrates and compares the trends of the different airport Groups 1, 2, 3 and 4 for 2007.



The graphic compares the amount of total commercial passengers 2007 with 2006, 2005, 2004, 2003, 2002 and 2001. The airports included, in this graphic, are: LHR, FRA, CDG, AMS, MAD, LGW, FCO, MUC, BCN, ORY, STN, MAN, MXP, ZRH, CPH, ARN, DUB, OSL, BRU, VIE, DUS, ATH, PMI, AGP, DME, HEL, TXL, LIS, HAM, PRG.

